

# GRANT COUNTY CERTIFIED LAND CORNER

CORNER NO. 6

T 4 N R 4 W  
~~WATERLOO~~ TOWNSHIP

**CERTIFICATE:**

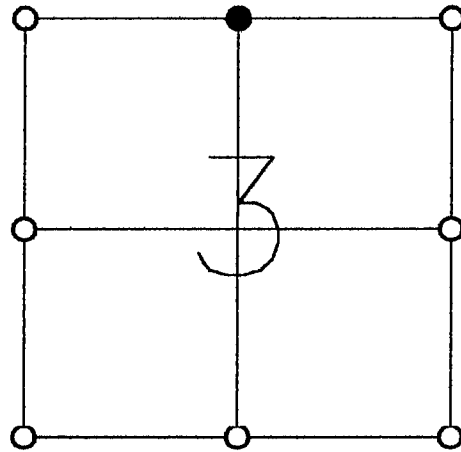
I, LARRY L. AUSTIN, DO HEREBY CERTIFY THAT ON 12 DAY OF NOVEMBER, 1998, I FOUND NO EVIDENCE OF THE NORTH 1/4 CORNER OF SECTION 3, TOWN 4 NORTH, RANGE 4 WEST, OF THE FOURTH PRINCIPAL MERIDIAN, AND I RE-ESTABLISHED SAID CORNER ACCORDING TO THE WISCONSIN STATUTES AS SHOWN AND DESCRIBED HEREON.

DATED THIS 30 DAY OF August, 1998

*Larry L. Austin*  
LARRY L. AUSTIN S-1903



SEAL



● = CORNER LOCATION

**HISTORY OF ORIGINAL CORNER ESTABLISHMENT:**

CORNER SET IN 1833 BY ROBERT CLARK.  
IN 1980 DAVID DAVIS FOUND A 1" IRON PIPE.

**DESCRIPTION OF CORNER EVIDENCE FOUND:**

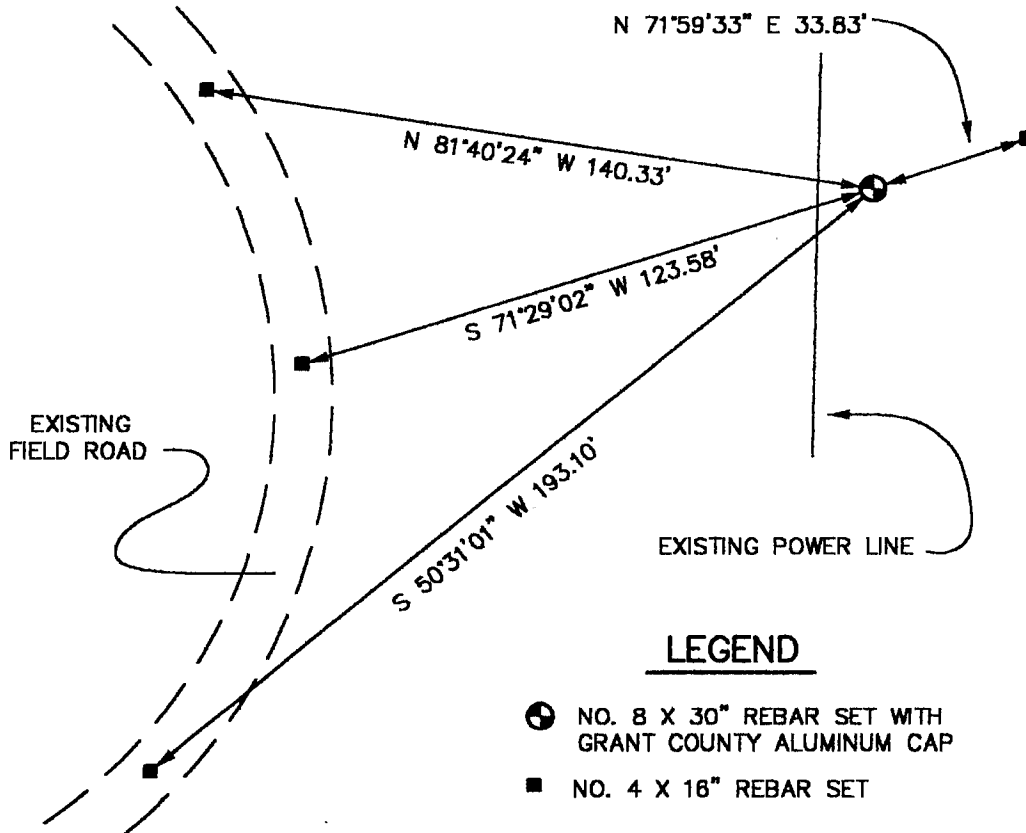
THE 1" IRON PIPE WAS NOT FOUND. I RESET THE NORTH 1/4 OF THE SECTION BASED ON THE SURVEY DONE BY DAVIS. VERIFIED THIS LOCATION USING E.D.M. AND G.P.S. METHODS.

**DESCRIPTION OF CORNER AND WITNESS MONUMENTS, REFERENCES AND ACCESSORIES USED TO PERPETUATE THE ORIGINAL OR RE-ESTABLISHED LOCATION OF THIS CORNER:**

**WITNESS TO THE CORNER LOCATION:**

BOBBY SEDGWICK  
SHELBY BLINDERT

**SKETCH:**



**LEGEND**

- NO. 8 X 30" REBAR SET WITH GRANT COUNTY ALUMINUM CAP
- NO. 4 X 16" REBAR SET