

**U.S. PUBLIC LAND SURVEY MONUMENT RECORD - GRANT COUNTY, WI**

Section 34, Town 5 North Range 4 West, Town of Little Grant

**CERTIFICATE:**

I, Aaron J. Austin, do hereby certify that the corner location on this record was determined by me and/or under my direct supervision and that this U.S. Public Land Survey Monument Record is correct and complete to the best of my knowledge and belief.

Dated this 11th day of February, 2013.

*Aaron J. Austin*  
 Aaron J. Austin, S-2922



● = CORNER LOCATION

**HISTORY OF CORNER ESTABLISHMENT:**

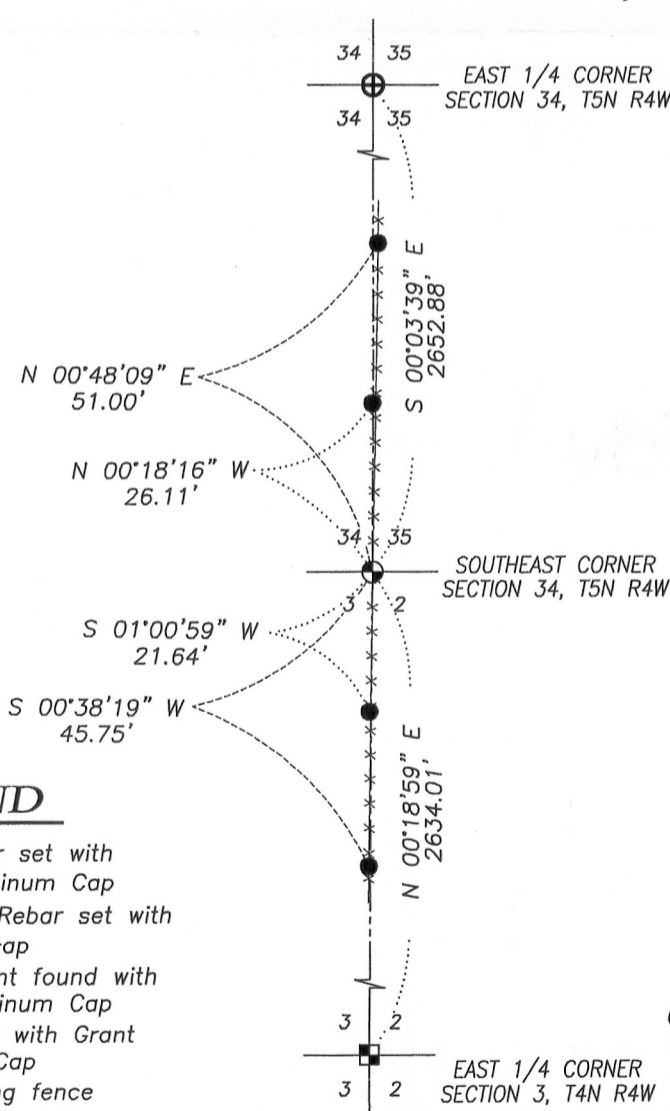
Corner originally set in 1832 by Lucius Lyon. Sam Wiltse measured to the corner in 1844. J.C. Scott measured to the corner in 1882. Larry Austin set a Grant County Aluminum Monument and tied this location in 1993. Larry Austin also measured to this corner in 1998. I measured to this corner in 2012.

**DESCRIPTION OF CORNER EVIDENCE FOUND:**

I measured to this corner on a survey dated 12-30-2012. At that time, I found the Aluminum Monument set by Larry Austin. I revisited this corner on a survey dated 2-8-2013. The corner and ties established by Larry Austin could not be recovered due to recent bulldozing work done in the area. I reset the corner based upon measurements taken from the survey dated 12-30-2012 and established new ties.

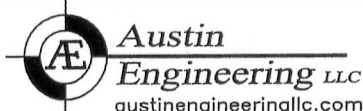
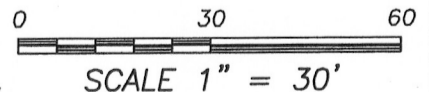
**DESCRIPTION OF CORNER AND WITNESS MONUMENTS, references and accessories used to perpetuate the original or re-established location of this corner. Witnesses to corner location Bobby Sedgwick and Shelby Blindert.**

**SKETCH:**



**LEGEND**

- ⊕ No. 8 x 24" rebar set with Grant County Aluminum Cap
- Number 4 x 24" Rebar set with red plastic "TIE" cap
- ⊠ Aluminum Monument found with Grant County Aluminum Cap
- ⊕ No. 8 rebar found with Grant County Aluminum Cap
- x-x- Approximate existing fence



4211 HWY 81 E, LANCASTER, WI 53813  
 PHONE: 608-723-6363 FAX: 608-723-6702

JOB NO: 13s004  
 G:\T4NR4W\22  
 H:\TIE\T5NR4W\125

FIELDBOOK: TDSR  
 DRAWN BY: AJ AUSTIN  
 CREW: BS-SB

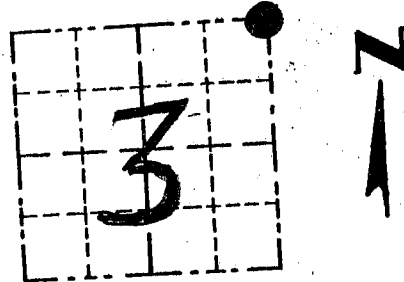
# GRANT COUNTY

## Survey Monument Record

TYPE OF MONUMENT ALUMINUM MONUMENT  
STATE PLANE COORDINATES: N \_\_\_\_\_  
E \_\_\_\_\_  
ELEVATION — M.S.L. DATUM: \_\_\_\_\_  
THETA ANGLE: \_\_\_\_\_  
FIELD BOOK: 93-21  
PAGE \_\_\_\_\_

CORNER NO. \_\_\_\_\_  
SECTION 3  
TOWN 4 N  
RANGE 4 W

NE COR, SEC 3



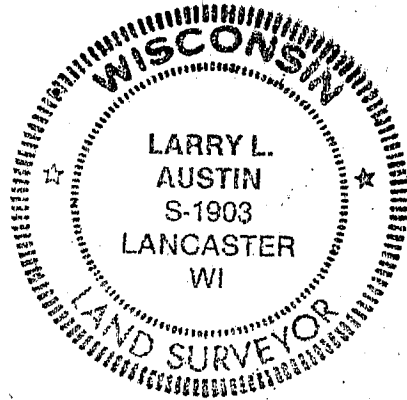
LOCATION  
(Indicated by "●")

### BASIS FOR MONUMENT LOCATION

(Use reverse side if necessary)

Show info such as: History of corner, with reference to Vol. and pg., dates, surveyor; exact description of monument replaced; if location computed, by taped or EDM traverse; landowner, remarks, etc.

SEAL:



CORNER WAS SET; E-W LOCATION DETERMINED BY N-S FENCE; N-S LOCATION DETERMINED BY PROPORTIONATE MEASUREMENT TO "40" CORNER TO NORTH & 1/4 CORNER TO SOUTH.

CERTIFIED CORRECT

Larry L. Austin  
Registered Land Surveyor

DATE: 12-30-93

### TIE SKETCH

Show at least three (3) ties and monument

#### LEGEND

- Alum. Mon. SET = CORNER
- △ RAILROAD SPIKE SET = TIES
- x — x — EXISTING FENCE

