

U.S. PUBLIC LAND SURVEY MONUMENT RECORD - GRANT COUNTY, WI

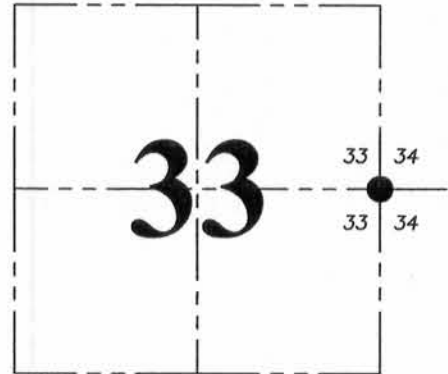
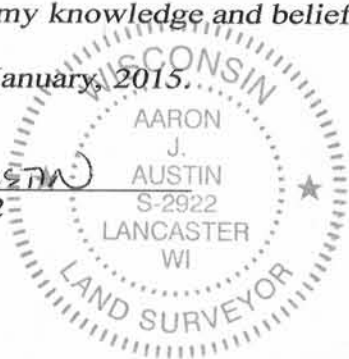
Section 33, Town 5 North Range 4 West, Town of Little Grant

CERTIFICATE:

I, Aaron J. Austin, Professional Wisconsin Land Surveyor, do hereby certify that the corner location on this record was determined by me and/or under my direct supervision and that this U.S. Public Land Survey Monument Record is correct and complete to the best of my knowledge and belief.

Dated this 30th day of January, 2015.

Aaron J. Austin
 Aaron J. Austin, S-2922



● = CORNER LOCATION

HISTORY OF CORNER ESTABLISHMENT:

1833-Harvey Parke set original corner.
 1854-Clark tied to this corner on a Survey in Book C, Page 50.
 1977-Krohn set a 2" iron pipe at the corner on a Survey in Book G, Page 236.
 No other record was found for this corner.

DESCRIPTION OF CORNER EVIDENCE FOUND:

I found a disturbed 2" iron pipe laying in the existing fence line. I reset the corner at Krohns location by measuring the existing monument at the Southeast corner of Section 33 and a 1" iron pipe found at the Northeast corner of that survey filed in Book G, Page 236. I set 4 witness monuments as shown hereon. The corner location was verified by G.P.S. methods.

DESCRIPTION OF CORNER AND WITNESS MONUMENTS, references and accessories used to perpetuate the original or re-established location of this corner. Witnesses to corner location Shane Austin.

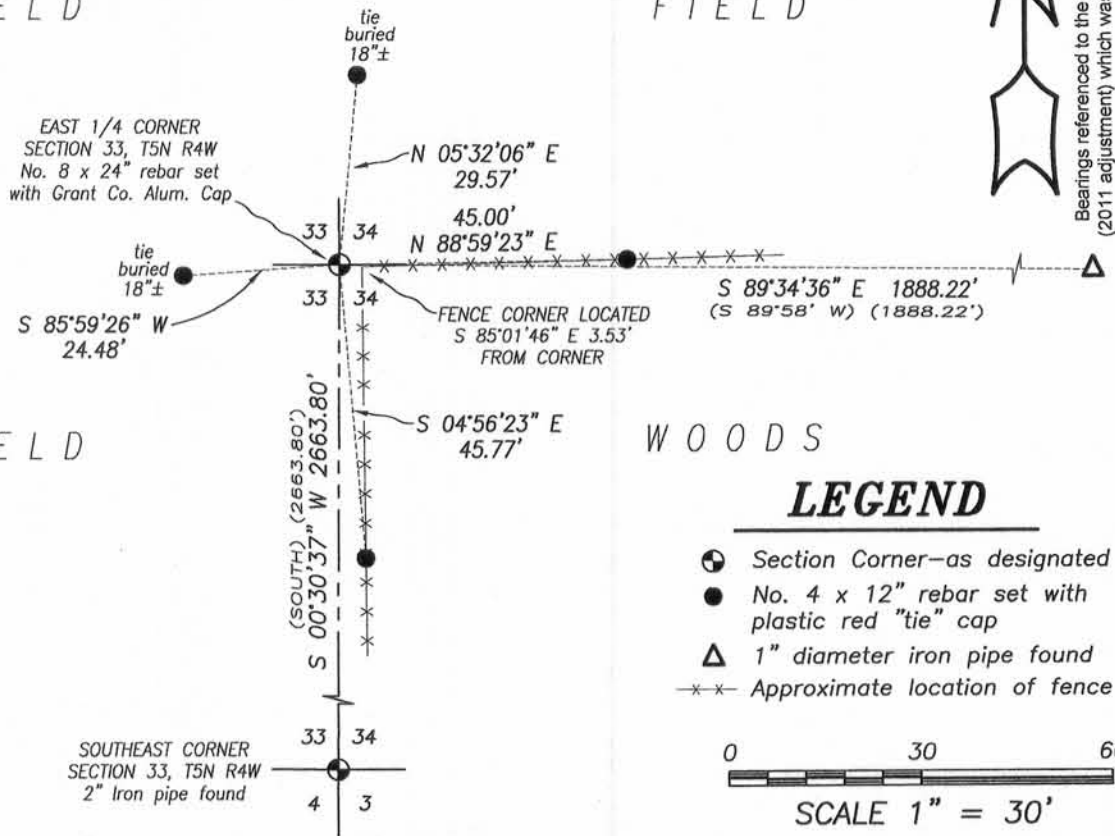
SKETCH:

FIELD

FIELD

FIELD

WOODS



LEGEND

- Section Corner—as designated
- No. 4 x 12" rebar set with plastic red "tie" cap
- △ 1" diameter iron pipe found
- x-x- Approximate location of fence



Austin Engineering LLC
 austinengineeringllc.com

4211 HWY 81 E, LANCASTER, WI 53813
 PHONE: 608-723-6363 FAX: 608-723-6702

JOB NO: 14s226
 H:\CRD\14s226-SKEMP
 H:\TIE\T5NR4W\117

FIELDBOOK: TDSR
 DRAWN BY: AJ AUSTIN
 CREW: SW AUSTIN