

U.S. PUBLIC LAND SURVEY MONUMENT RECORD - GRANT COUNTY, WI

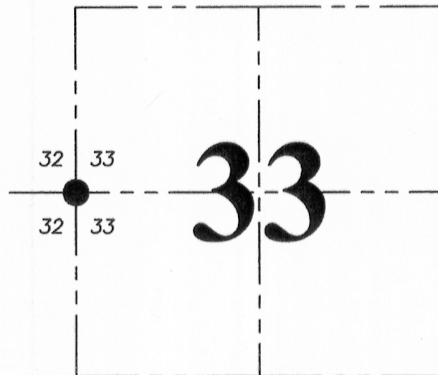
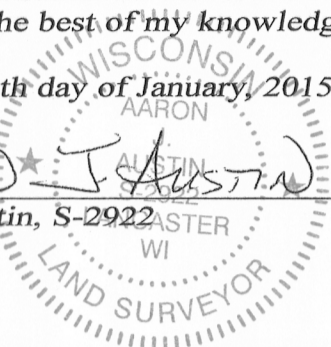
Section 33, Town 5 North Range 4 West, Town of Little Grant

CERTIFICATE:

I, Aaron J. Austin, Professional Wisconsin Land Surveyor, do hereby certify that the corner location on this record was determined by me and/or under my direct supervision and that this U.S. Public Land Survey Monument Record is correct and complete to the best of my knowledge and belief.

Dated this 30th day of January, 2015.

Aaron J. Austin
 Aaron J. Austin, S-2922



● = CORNER LOCATION

HISTORY OF CORNER ESTABLISHMENT:

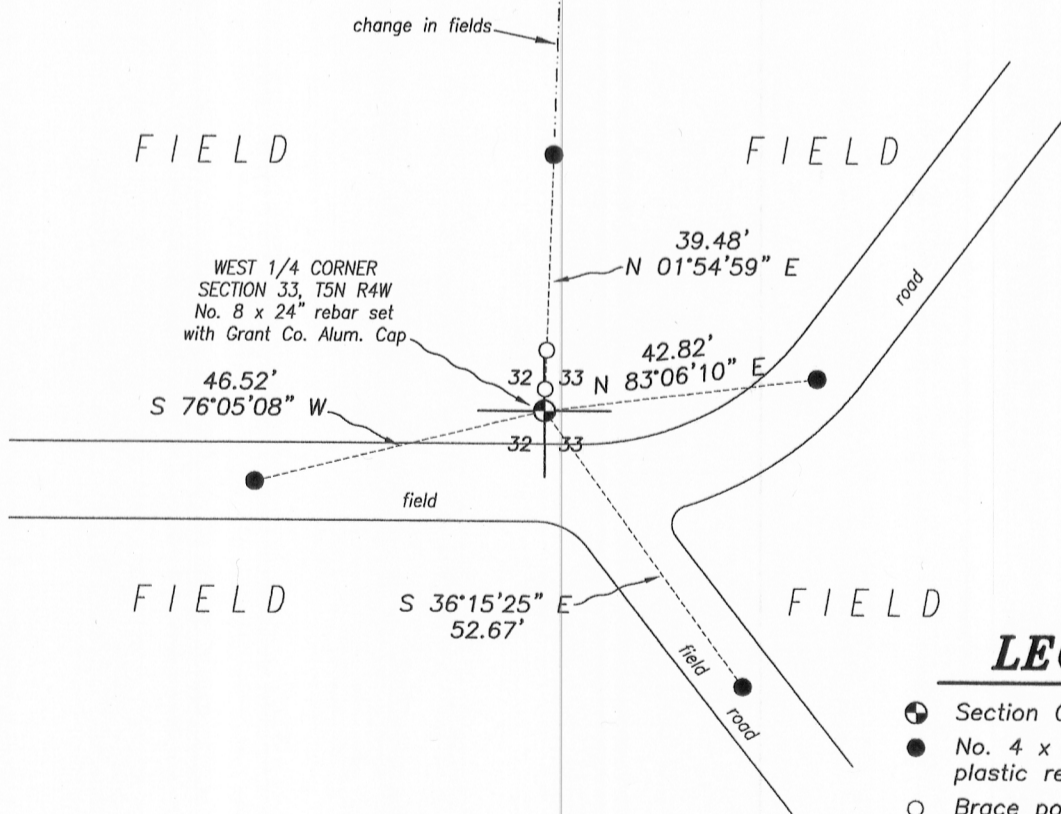
1833-Harvey Parke set original corner.
 1854-Clark tied to this corner on a Survey in Book C, Page 50.
 No other record was found for this corner.

DESCRIPTION OF CORNER EVIDENCE FOUND:

Cultivated fields exist on all sides of this corner, therefore no bearing trees were able to be recovered. The land owner stated that the brace post I found was the corner post which was left in place when the fence was removed. I reset the corner by evidence of this corner post and set 4 witness corners as shown hereon. I verified this location by G.P.S. methods.

DESCRIPTION OF CORNER AND WITNESS MONUMENTS, references and accessories used to perpetuate the original or re-established location of this corner. Witnesses to corner location Shane Austin.

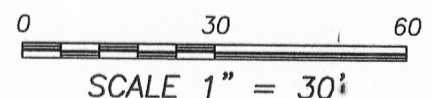
SKETCH:



Bearings referenced to the Grant County Coordinate System (2011 adjustment) which was determined by G.P.S. observation.

LEGEND

- ⊕ Section Corner—as designated
- No. 4 x 12" rebar set with plastic red "tie" cap
- Brace post
- *- Approximate location of fence



Austin Engineering LLC
 austinengineeringllc.com
 4211 HWY 81 E, LANCASTER, WI 53813
 PHONE: 608-723-6363 FAX: 608-723-6702

JOB NO: 14s226
 H:\CRD\14s226-SKEMP
 H:\TIE\T5NR4W\116

FIELDBOOK: TDSR
 DRAWN BY: AJ AUSTIN
 CREW: SW AUSTIN