

U.S. PUBLIC LAND SURVEY MONUMENT RECORD - GRANT COUNTY, WI

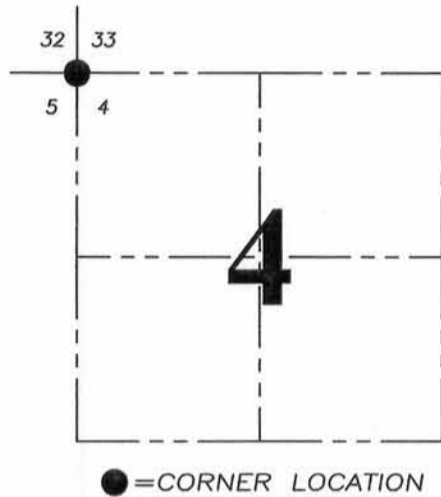
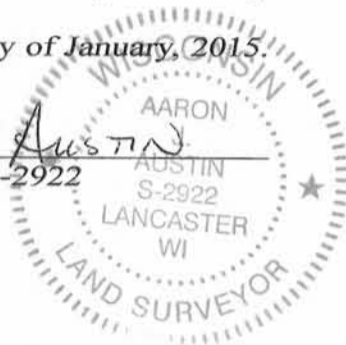
Section 4, Town 4 North Range 4 West, Town of Beetown

CERTIFICATE:

I, Aaron J. Austin, Professional Wisconsin Land Surveyor, do hereby certify that the corner location on this record was determined by me and/or under my direct supervision and that this U.S. Public Land Survey Monument Record is correct and complete to the best of my knowledge and belief.

Dated this 30th day of January, 2015.

Aaron J. Austin
 Aaron J. Austin, S-2922



HISTORY OF CORNER ESTABLISHMENT:

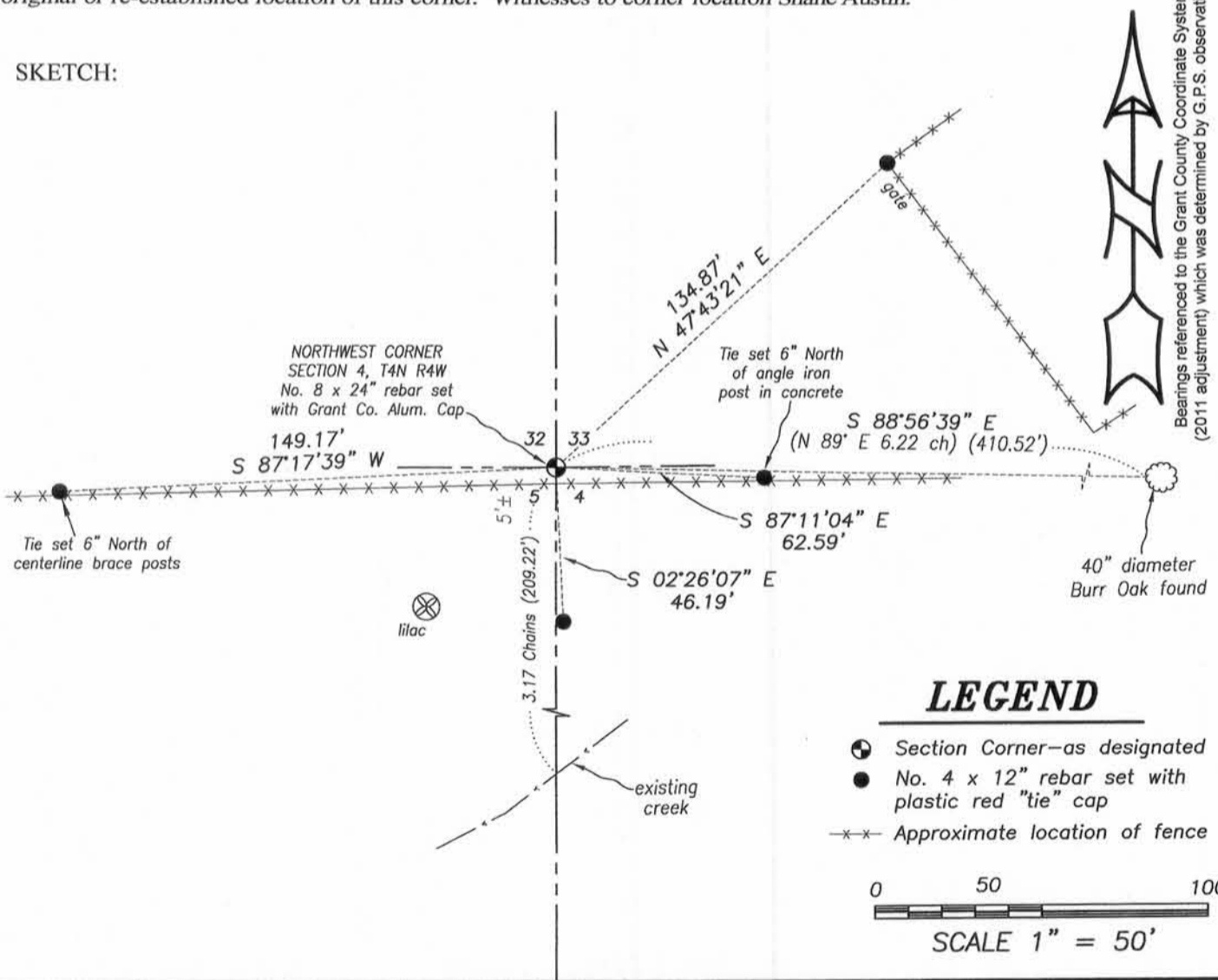
1832-Lucius Lyon set original corner.
 1844-Wiltse measured to the corner on a survey in Book A, Page 185.
 No other record was found for this corner.

DESCRIPTION OF CORNER EVIDENCE FOUND:

The East-West fence was installed recently. The land owner stated they put the fence in without benefit of knowing where the line was. I reset the corner at a recorded distance from a call of the centerline of a Brook (to the South) and a call to a bearing tree (to the East). This location fit well with area corners to the North, South and East.

DESCRIPTION OF CORNER AND WITNESS MONUMENTS, references and accessories used to perpetuate the original or re-established location of this corner. Witnesses to corner location Shane Austin.

SKETCH:



Austin Engineering LLC
 austinengineeringllc.com

4211 HWY 81 E, LANCASTER, WI 53813
 PHONE: 608-723-6363 FAX: 608-723-6702

JOB NO: 14s226
 H:\CRD\14s226-SKEMP
 H:\TIE\T4NR4W\09

FIELDBOOK: TDSR
 DRAWN BY: AJ AUSTIN
 CREW: SW AUSTIN