

U.S. PUBLIC LAND SURVEY MONUMENT RECORD - GRANT COUNTY, WI

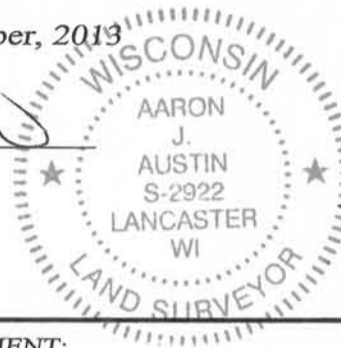
Section 29, Town 5 North Range 4 West, Town of Little Grant

CERTIFICATE:

I, Aaron J. Austin, do hereby certify that the corner location on this record was determined by me and/or under my direct supervision and that this U.S. Public Land Survey Monument Record is correct and complete to the best of my knowledge and belief.

Dated this 23rd day of December, 2013

Aaron J. Austin
 Aaron J. Austin, S-2922



● = CORNER LOCATION

HISTORY OF CORNER ESTABLISHMENT:

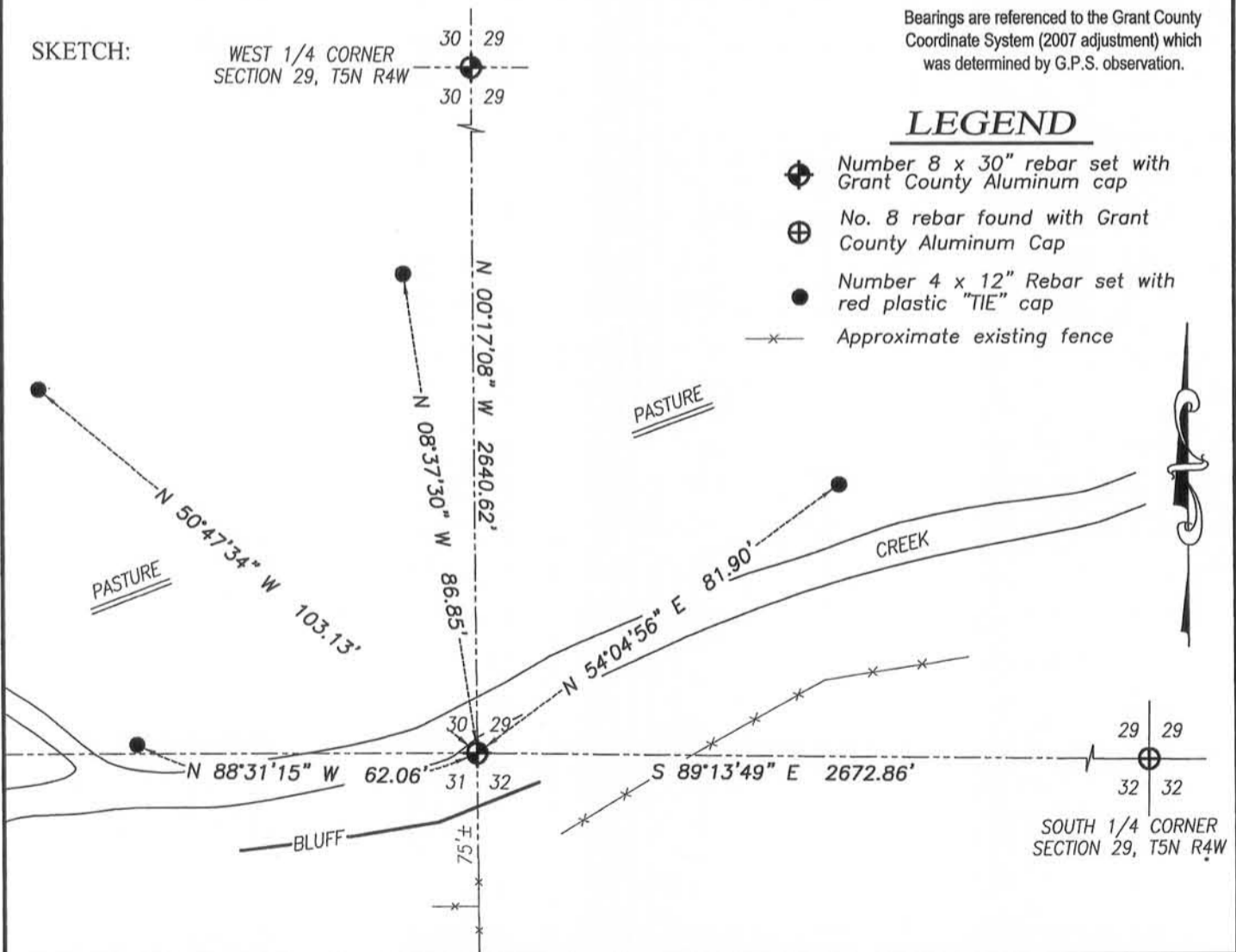
Corner originally set in 1833 by Parke.
 Corner was shown on a Survey filed in Book D, Page 336 dated in 1909.
 No other record found for this corner.

DESCRIPTION OF CORNER EVIDENCE FOUND:

No evidence was shown on the above referenced survey that this corner was measured to. I reset the corner online between the West 1/4 corner of Section 29 and an occupied fence corner on top of the bluff (approximately 75 feet South of this corner) at the recorded distance of 10 Links from the centerline thread of the stream, as called for in the original notes. I verified this corner by E.D.M. and G.P.S methods.

DESCRIPTION OF CORNER AND WITNESS MONUMENTS, references and accessories used to perpetuate the original or re-established location of this corner. Witnesses to corner location Shane Austin.

SKETCH:



Bearings are referenced to the Grant County Coordinate System (2007 adjustment) which was determined by G.P.S. observation.

LEGEND

- ⊕ Number 8 x 30" rebar set with Grant County Aluminum cap
- ⊕ No. 8 rebar found with Grant County Aluminum Cap
- Number 4 x 12" Rebar set with red plastic "TIE" cap
- *— Approximate existing fence

Austin Engineering LLC
 austinengineeringllc.com
 4211 HWY 81 E, LANCASTER, WI 53813
 PHONE: 608-723-6363 FAX: 608-723-6702

JOB NO: 13S169
 G:\13S169
 H:\TIE\T5NR4W\111

DRAWN BY: SW AUSTIN
 CREW: SW AUSTIN
 APPROVED: AJ AUSTIN

No scale