

GRANT COUNTY

REC'D JAN 29 1996

Survey Monument Record

CORNER NO. 100
 SECTION 25
 TOWN S1N
 RANGE 4W

TYPE OF MONUMENT GRANT Co. Alum. Mon Set

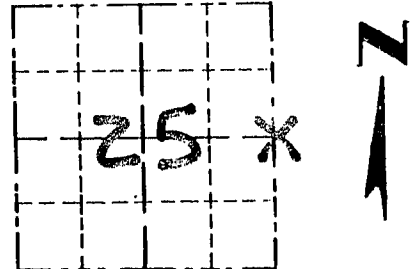
STATE PLANE COORDINATES: N _____
 E _____

ELEVATION — M.S.L. DATUM: _____

THETA ANGLE: _____

FIELD BOOK: 95-13

PAGE (36)



LOCATION

(Indicated by "X")

BASIS FOR MONUMENT LOCATION

(Use reverse side if necessary)

GRANT COUNTY MONUMENT WAS SET IN A NORTH-SOUTH SEAL: FENCE LINE FOR E-W LOCATION AND MIDWAY BETWEEN NE COR 25 AND SE COR 25 FOR N-S LOCATION AFTER VERIFICATION BY EDM TRAVERSE OF THE AREA.

CERTIFIED CORRECT

Larry J. Rust
 Registered Land Surveyor

DATE: 1/8/96

TIE SKETCH

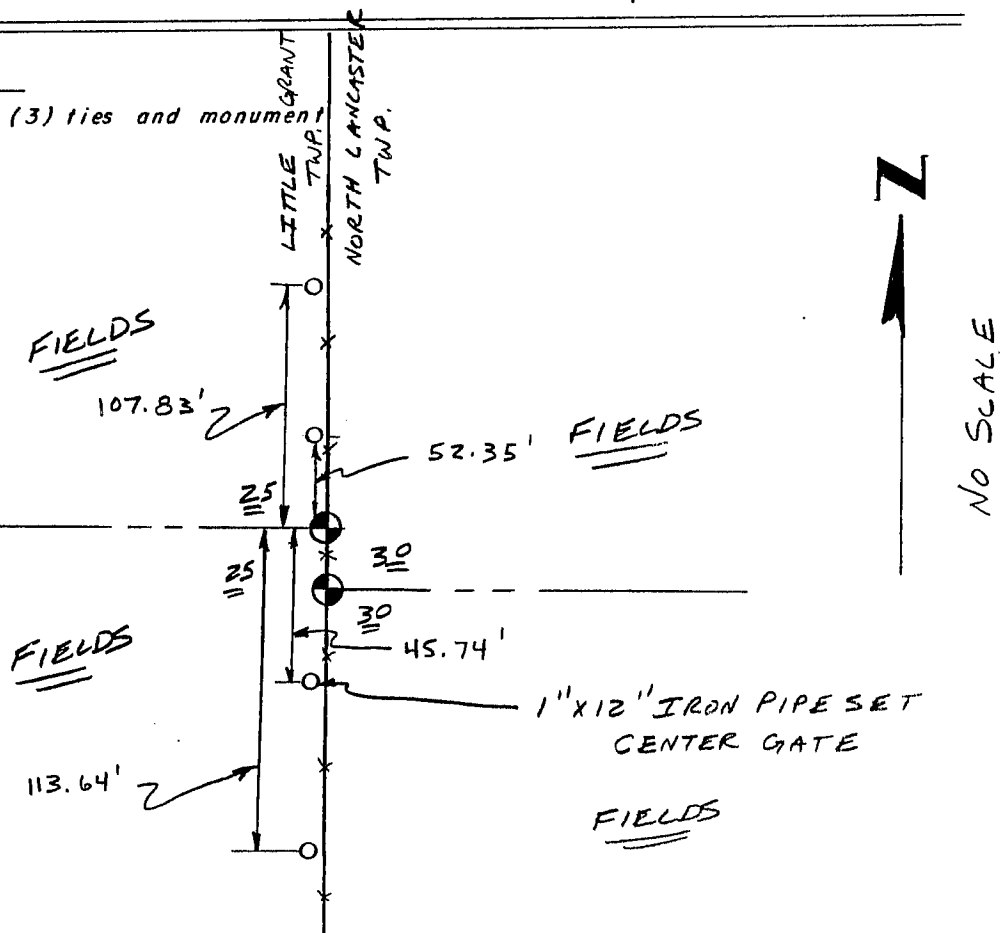
Show at least three (3) ties and monument

LEGEND

⊙ GRANT COUNTY ALUM. MON. SET

○ 1"X12" IRON PIPE SET

—X—X— EXISTING FENCE



NO SCALE

GRANT COUNTY

REC'D JAN 29 1996

Survey Monument Record

TYPE OF MONUMENT GRANT Co. Alum. MON SET

STATE PLANE COORDINATES: N _____
E _____

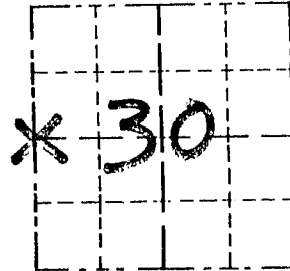
ELEVATION — M.S.L. DATUM: _____

THETA ANGLE: _____

FIELD BOOK: 95-13

PAGE: 33

CORNER NO. 94
SECTION 30
TOWN S11
RANGE 3W



LOCATION
(Indicated by "X")

BASIS FOR MONUMENT LOCATION

(Use reverse side if necessary)

GRANT COUNTY ALUMINUM
MONUMENT SET ON THE
EAST LINE OF SEC 25 -
T5N, R4W AND AT THE
AVERAGE OF THE JOGS OF
THE NW COR + SW COR OF
SEC 30 AFTER VERIFICATION
BY EDM TRAVERSE OF THE
AREA.

SEAL:

CERTIFIED CORRECT

Randy R. Gust
Registered Land Surveyor

DATE: 1-8-96

TIE SKETCH

Show at least three (3) ties and monument

- LEGEND
- ⊕ GRANT Co. ALUM. MON.
 - 1" X 12" IRON PIPE SET
 - XX EXISTING FENCE

