

U.S. PUBLIC LAND SURVEY MONUMENT RECORD - GRANT COUNTY, WI

Section 26, Town 5 North Range 4 West, Town of Little Grant

CERTIFICATE:

I, Aaron J. Austin, Wisconsin Professional Land Surveyor, do hereby certify that the corner location on this record was determined by me and/or under my direct supervision and that this U.S. Public Land Survey Monument Record is correct and complete to the best of my knowledge and belief.

Dated this 23rd day of April, 2015

Aaron J. Austin
 Aaron J. Austin, S-2932
 LANCASTER, WI
 LAND SURVEYOR



● = CORNER LOCATION

HISTORY OF CORNER ESTABLISHMENT:

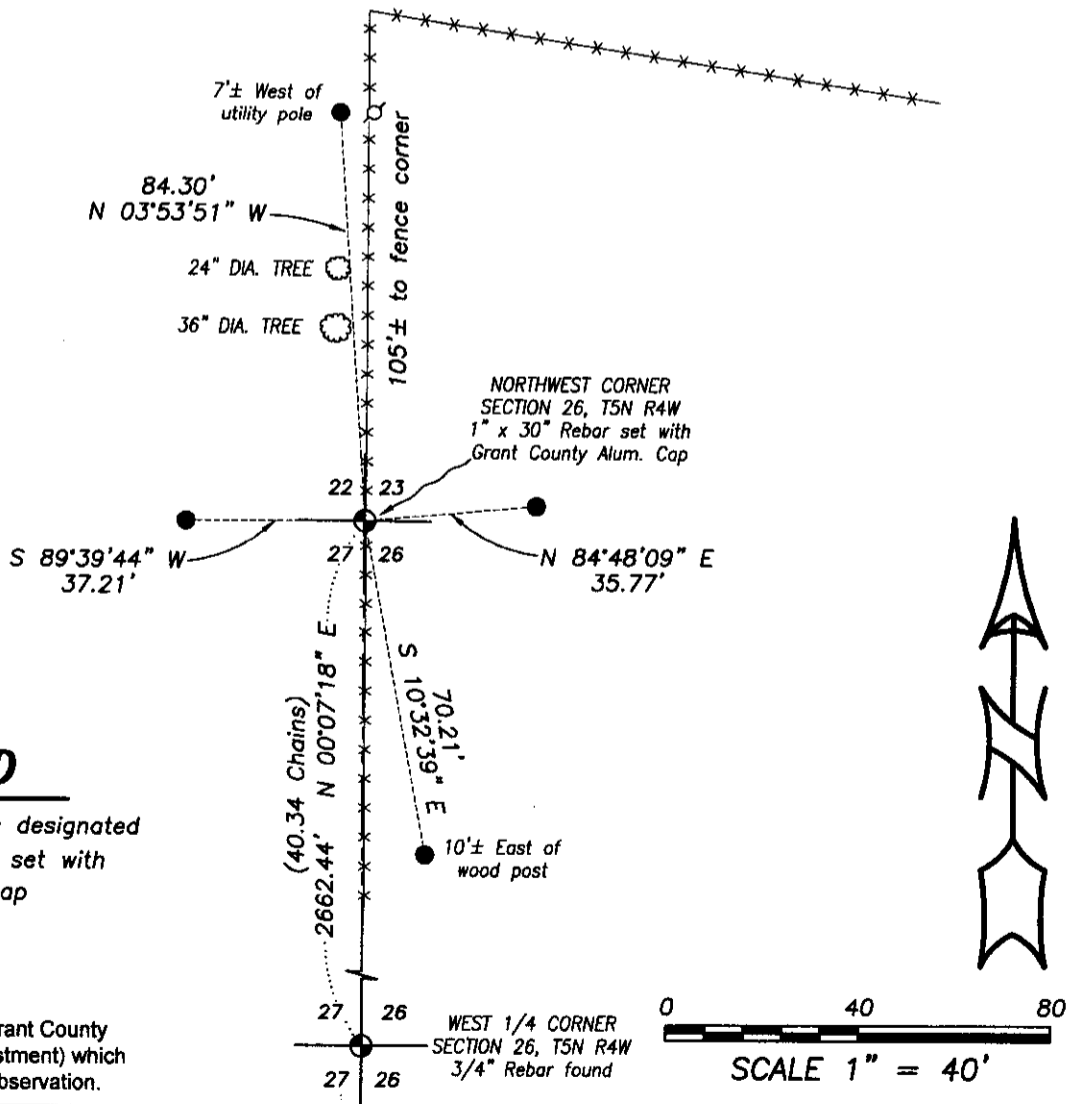
- 1833-Parke set original corner.
- 1844-Wiltse tied to the corner on a Survey in Book B, Page 43.
- 1849-Stuntz tied to the corner on a Survey in Book B, Page 175.
- 1854-Clark tied to the corner on a Survey in Book C, Page 95.
- 1868-Barber tied to the corner on a Survey in Book B, Page 531.
- No other record was found for this corner.

DESCRIPTION OF CORNER EVIDENCE FOUND:

I reset the corner in a North-South fence line at the recorded distance of 40.34 Chains North of the West 1/4 corner of Section 36 as shown on the Survey filed in Book B, Page 175. This location also checked very well to a 40 corner located Southerly along this line. I verified this location with E.D.M. and G.P.S. methods.

DESCRIPTION OF CORNER AND WITNESS MONUMENTS, references and accessories used to perpetuate the original or re-established location of this corner. Witnesses to corner location Shane Austin.

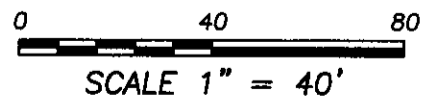
SKETCH:



LEGEND

- ⊙ Section Corner—as designated
- 1/2" x 12" rebar set with red plastic "tie" cap
- ⊙ Utility pole
- () Recorded as
- x-x- Existing fence

Bearings referenced to the Grant County Coordinate System (2011 adjustment) which was determined by G.P.S. observation.



Austin Engineering LLC
 austinengineeringllc.com
 4211 HWY 81 E, LANCASTER, WI 53813
 PHONE: 608-723-6363 FAX: 608-723-6702

JOB NO: 15S059
 H:\CRD\15s059
 H:\TIE\T5NR4W\85

FIELDBOOK: TDSR
 DRAWN BY: AJ AUSTIN
 CREW: SW AUSTIN