

# U.S. PUBLIC LAND SURVEY MONUMENT RECORD - GRANT COUNTY, WI

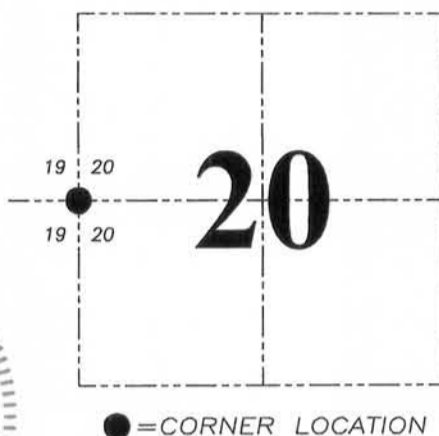
Section 20, Town 5 North Range 4 West, Town of Little Grant

**CERTIFICATE:**

I, Aaron J. Austin, do hereby certify that the corner location on this record was determined by me and/or under my direct supervision and that this U.S. Public Land Survey Monument Record is correct and complete to the best of my knowledge and belief.

Dated this 23rd day of December, 2013.

*Aaron J. Austin*  
 Aaron J. Austin, S-2922



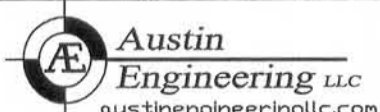
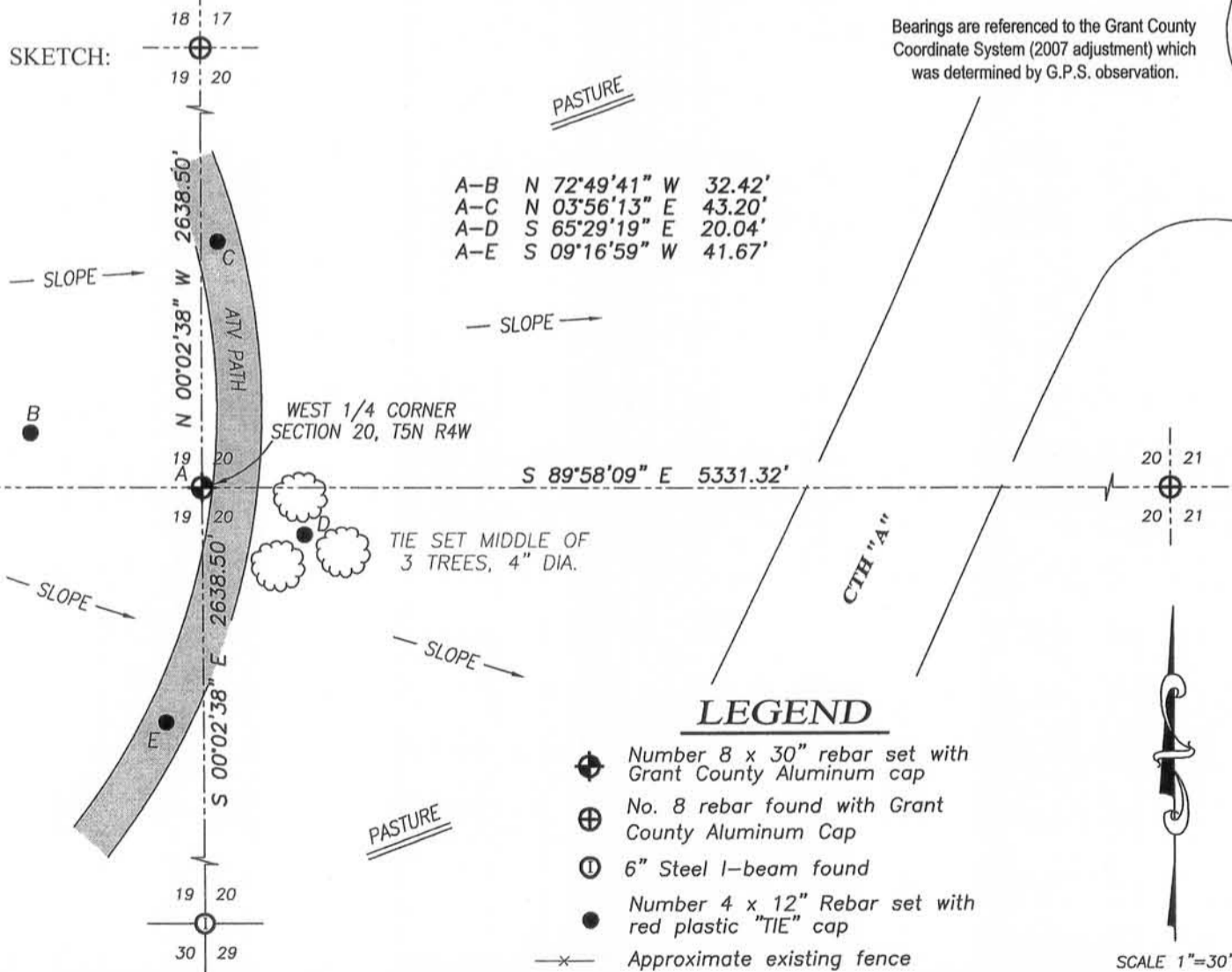
**HISTORY OF CORNER ESTABLISHMENT:**

Corner originally set in 1833 by Parke.  
 No other record found for this corner.

**DESCRIPTION OF CORNER EVIDENCE FOUND:**

Corner was reset midway and on-line between the Northwest corner and Southwest corner of Section 20. Corner fits well with the occupied Northwest corner, SW 1/4, NW 1/4. The call to the creek in the original notes was not utilized. The creek meanders through the bottom, which may have been rerouted due to construction of County Highway "A" and agriculture fields in the area.

**DESCRIPTION OF CORNER AND WITNESS MONUMENTS, references and accessories used to perpetuate the original or re-established location of this corner. Witnesses to corner location Shane Austin.**



4211 HWY 81 E, LANCASTER, WI 53813  
 PHONE: 608-723-6363 FAX: 608-723-6702

JOB NO: 13S169  
 G:\13S169  
 H:\TIE\T5NR4W\75

DRAWN BY: SW AUSTIN  
 CREW: SW AUSTIN  
 APPROVED: AJ AUSTIN