

# GRANT COUNTY

## Survey Monument Record

TYPE OF MONUMENT GRANT Co. Alum. Mon.

STATE PLANE COORDINATES: N \_\_\_\_\_  
E \_\_\_\_\_

ELEVATION — M.S.L. DATUM: \_\_\_\_\_

THETA ANGLE: \_\_\_\_\_

FIELD BOOK: 94-19

PAGE: 35

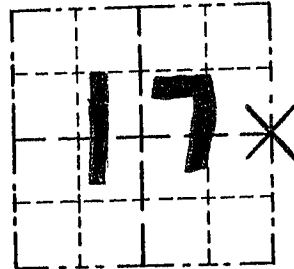
CORNER NO. 56

SECTION 17

TOWN 5 N

RANGE 4 W

E 1/4 Cor



LOCATION  
(Indicated by "X")

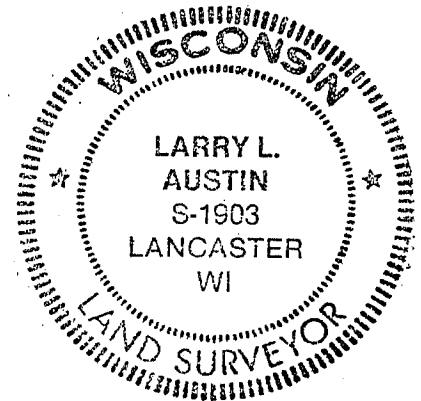
SEAL:

### BASIS FOR MONUMENT LOCATION

(Use reverse side if necessary)

Show info such as: History of corner, with reference to Vol. and pg., dates, surveyor; exact description of monument replaced; if location computed, by taped or EDM traverse; landowner, remarks, etc.

NO RECORD OF CORNER FOUND SINCE ORIGINAL SURVEYS IN 1833; I SET THE CORNER AT MIDWAY BETWEEN THE NE & SE CORNER. VERIFIED BY EDM TRAVERSE OF THE AREA.



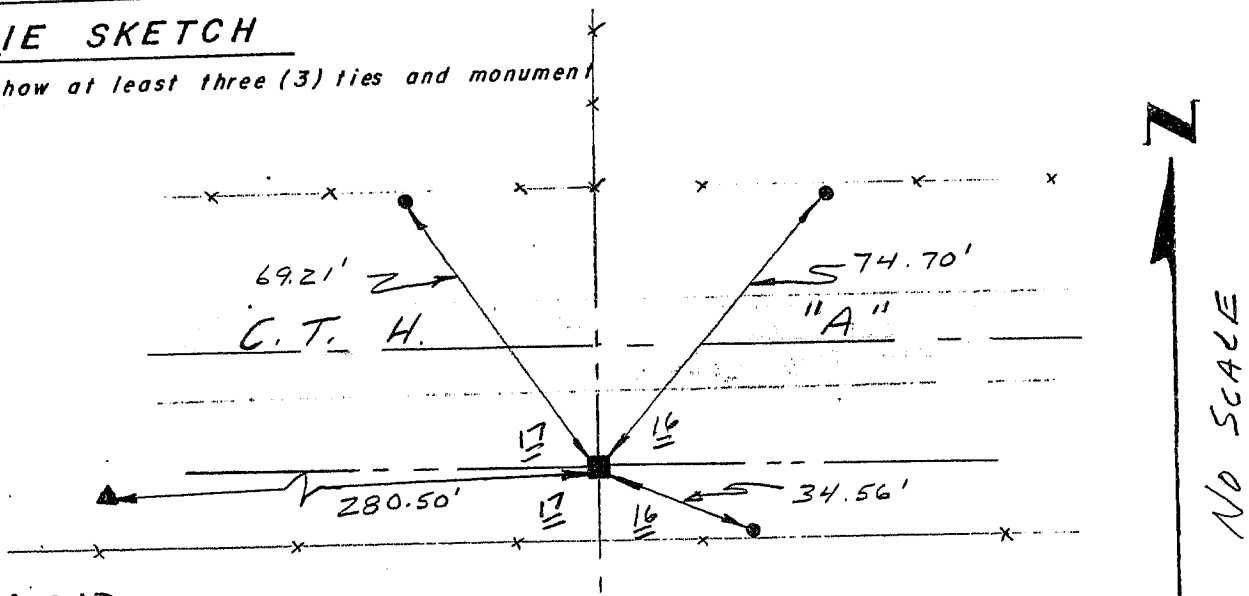
CERTIFIED CORRECT

Gary R. Rust  
Registered Land Surveyor

DATE: 1-16-95

### TIE SKETCH

Show at least three (3) ties and monumen



### LEGEND

- GRANT CO. ALUM. MON. SET
- 1" IRON PIPE SET
- ▲ FD. 1/2" PIPE SET IN CONCRETE (w/ D.O.T. MARKER.)