

U.S. PUBLIC LAND SURVEY MONUMENT RECORD - GRANT COUNTY, WI

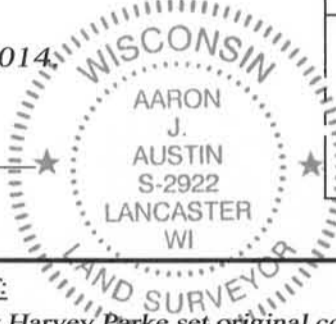
Section 21, Town 5 North Range 4 West, Town of Little Grant

CERTIFICATE:

I, Aaron J. Austin, do hereby certify that the corner location on this record was determined by me and/or under my direct supervision and that this U.S. Public Land Survey Monument Record is correct and complete to the best of my knowledge and belief.

Dated this 9th day of September, 2014.

Aaron J. Austin
 Aaron J. Austin, S-2922



HISTORY OF CORNER ESTABLISHMENT:

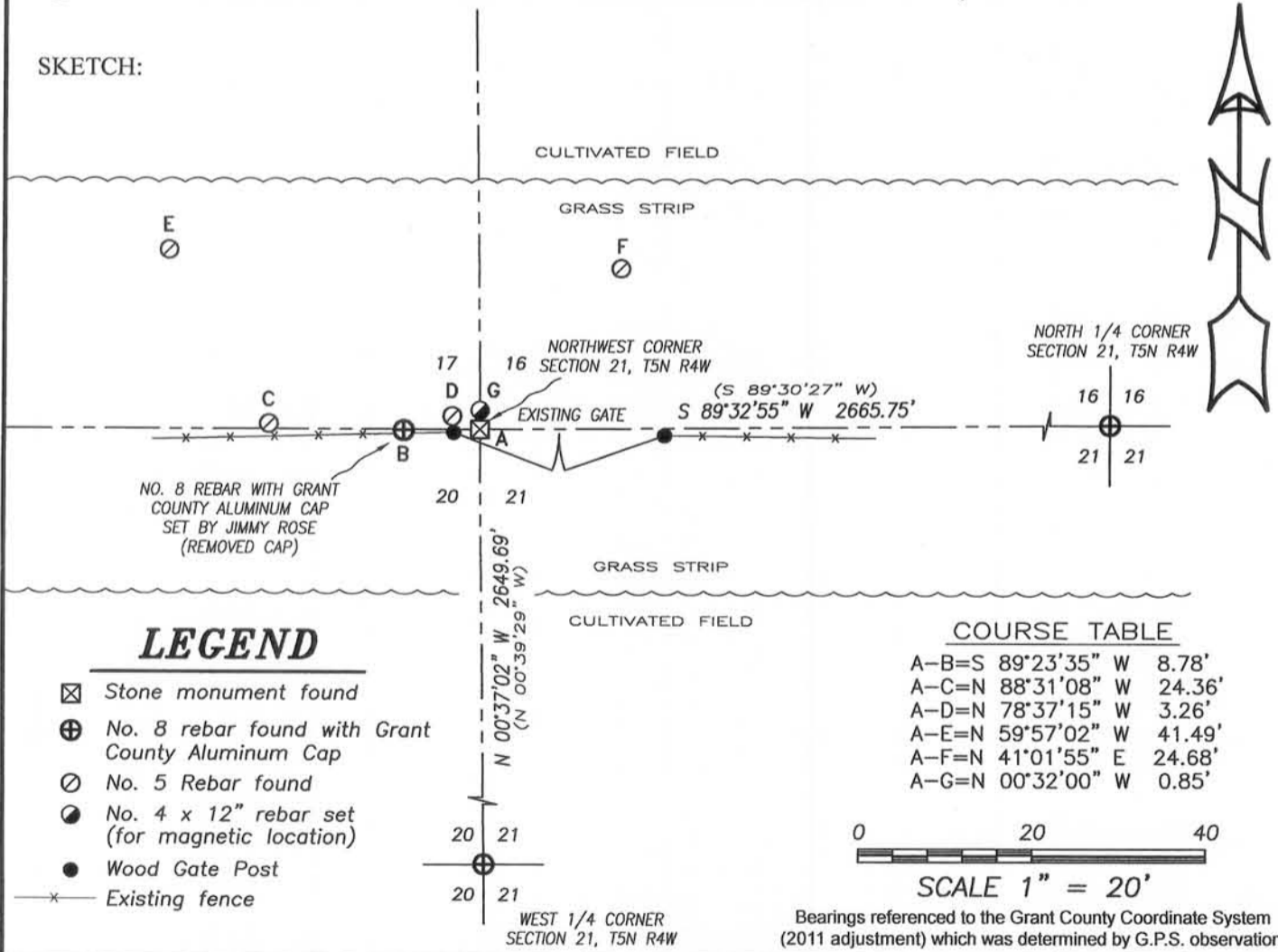
- 1833 by Harvey Parke set original corner.
- 1857 Hayden found the original corner on a survey in Book C, Page 162.
- 1995 L. Austin reset the corner of a survey in Book V, Page 31.
- 1995 L. Austin set a Grant County Alum. Mon. and prepared a tie sheet for this corner
- 1997 King tied to the corner on C.S.M. No. 432.
- 1997 Bowden tied to the corner on a survey in Book Z, Page 14.
- 2009 L. Austin tied to the corner on a survey in Book 25, Page 57.
- 2011 A. Austin tied to the corner on a survey in Book 29, Page 43.
- 2012 Rose reset the corner on a survey in Book 32, Page 54.
- 2012 Rose set a No. 8 rebar with Grant Co. Alum. Cap and prepared a tie sheet for this corner.

DESCRIPTION OF CORNER EVIDENCE FOUND:

I found a No. 8 rebar with a Grant County Aluminum Cap and all four ties as set by Jimmy Rose. This monument location did not coincide with the location established by Larry Austin, which has been accepted by other surveyors as mentioned above. After communication with Jimmy Rose, we agreed that the monument was set in error and I left the rebar in place and removed the Grant County Aluminum Cap. I retraced the monument from measurements taken to the Survey filed in Book 25, Page 57. Excavation was done to locate the original monument and/or to set a new monument and I found a stone at this corner's location. I set a No. 4 rebar next to the stone for purposes of locating it with a metal detector in the future.

DESCRIPTION OF CORNER AND WITNESS MONUMENTS, references and accessories used to perpetuate the original or re-established location of this corner. Witnesses to corner location S. Austin, T. Austin

SKETCH:



LEGEND

- ☒ Stone monument found
- ⊕ No. 8 rebar found with Grant County Aluminum Cap
- ⊙ No. 5 Rebar found
- No. 4 x 12" rebar set (for magnetic location)
- Wood Gate Post
- x- Existing fence

COURSE TABLE

A-B	=	S 89°23'35" W	8.78'
A-C	=	N 88°31'08" W	24.36'
A-D	=	N 78°37'15" W	3.26'
A-E	=	N 59°57'02" W	41.49'
A-F	=	N 41°01'55" E	24.68'
A-G	=	N 00°32'00" W	0.85'



SCALE 1" = 20'

Bearings referenced to the Grant County Coordinate System (2011 adjustment) which was determined by G.P.S. observation.



Austin Engineering LLC
 austinengineeringllc.com

4211 HWY 81 E, LANCASTER, WI 53813
 PHONE: 608-723-6363 FAX: 608-723-6702

JOB NO: 14s115
 H:\CRD\14s115-SCHMIDT
 H:\TIE\T5NR4W\69

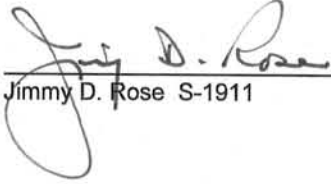
FIELDBOOK: TDSR
 DRAWN BY: AJ AUSTIN
 CREW: SA-TA

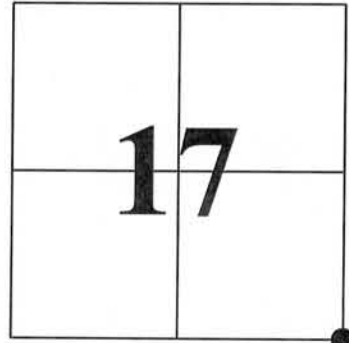
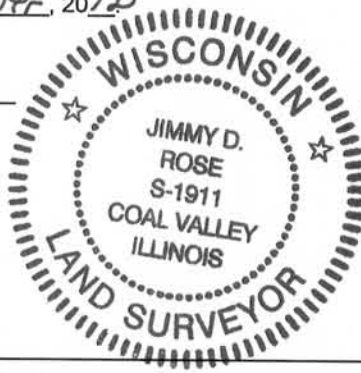
U.S. PUBLIC LAND SURVEY MONUMENT RECORD - GRANT COUNTY, WI
 Section 17, Town 5 North Range 4 West, Town of Little Grant

CERTIFICATE:

I, Jimmy D. Rose, do hereby certify that the corner location on this record was determined by me and/or under my direct supervision and that this U.S. Public Land Survey Monument Record is correct and complete to the best of my knowledge and belief.

Dated this 12th day of November, 2012


 Jimmy D. Rose S-1911



● = CORNER LOCATION

HISTORY OF CORNER ESTABLISHMENT: GRANT COUNTY ALUMINUM MONUMENT PLACED BY LARRY AUSTIN JANUARY 1995.

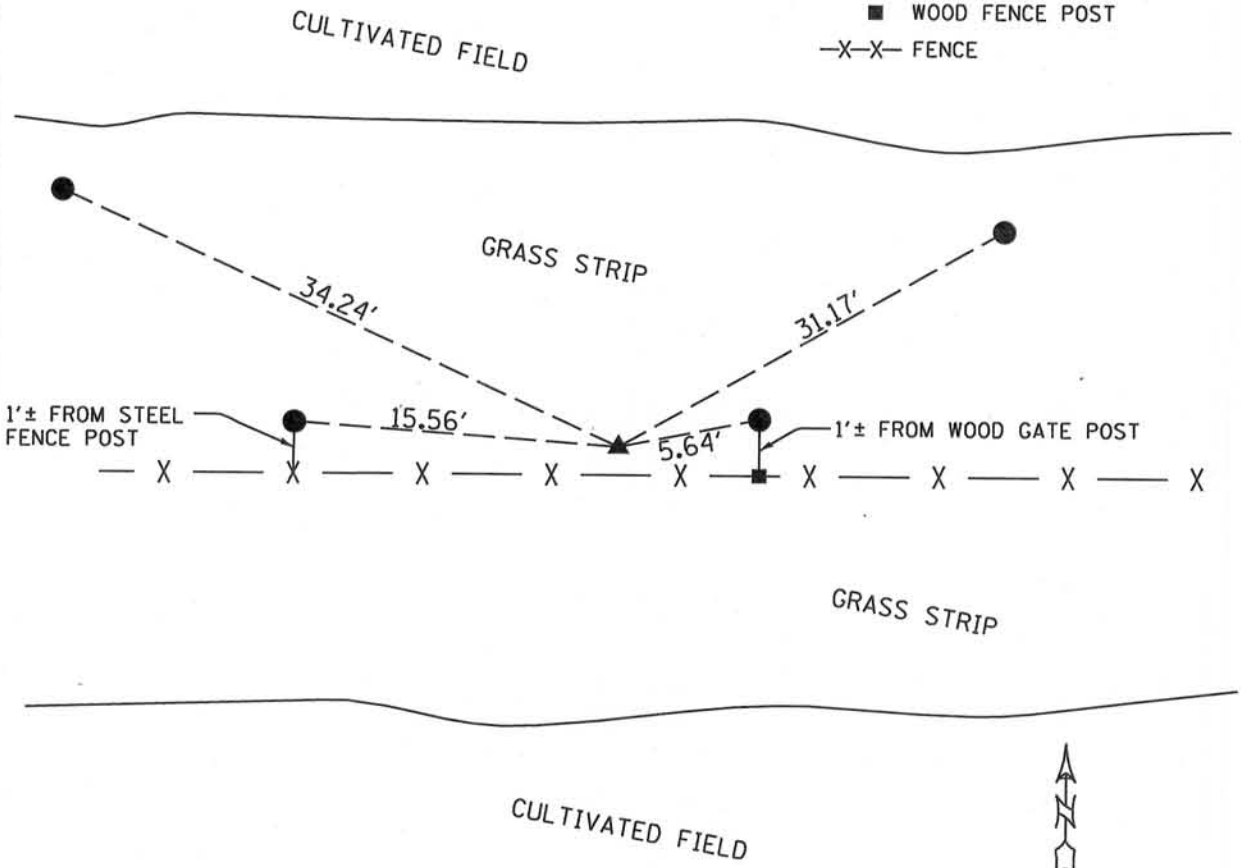
DESCRIPTION OF CORNER EVIDENCE FOUND: UNABLE TO FIND MONUMENT OR ACCESSORY TIES. ESTABLISHED CORNER LOCATION USING EVIDENCE OF PRIOR CORNER LOCATION AND PRIOR SURVEY TIED TO THE CORNER. VERIFIED LOCATION WITH TRAVERSE OF SECTION 17.

DESCRIPTION OF CORNER AND WITNESS MONUMENTS, references and accessories used to perpetuate the original or re-established location of this corner.

SKETCH:

LEGEND

- ▲ SET 1" DIA. REBAR W/ GRANT COUNTY MONUMENT CAP
- SET 5/8" DIA. REBAR
- WOOD FENCE POST
- X-X- FENCE



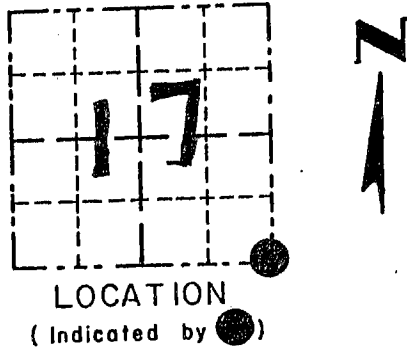
NOT TO SCALE

GRANT COUNTY

Survey Monument Record

TYPE OF MONUMENT GRANT Co. Alum. Mon.
 STATE PLANE COORDINATES: N _____
 E _____
 ELEVATION — M.S.L. DATUM: _____
 THETA ANGLE: _____
 FIELD BOOK: 94-19
 PAGE: 35

CORNER NO. 69
 SECTION 17
 TOWN 5N
 RANGE 4W
SE CORNER



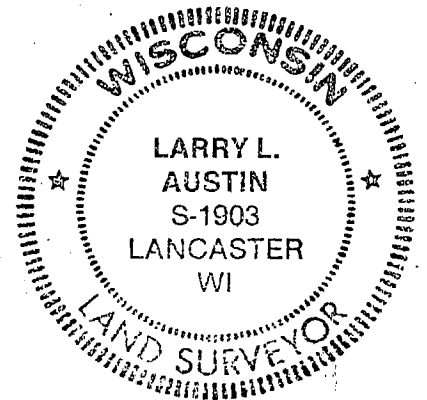
BASIS FOR MONUMENT LOCATION

(Use reverse side if necessary)

Show info such as: History of corner, with reference to Vol. and pg., dates, surveyor; exact description of monument replaced; if location computed, by taped or EDM traverse; landowner, remarks, etc.

SEAL:

No Record of Corner Found
Since Original Surveys;
Corner was set at change
in fencing & verified by
EDM traverse of the
area.



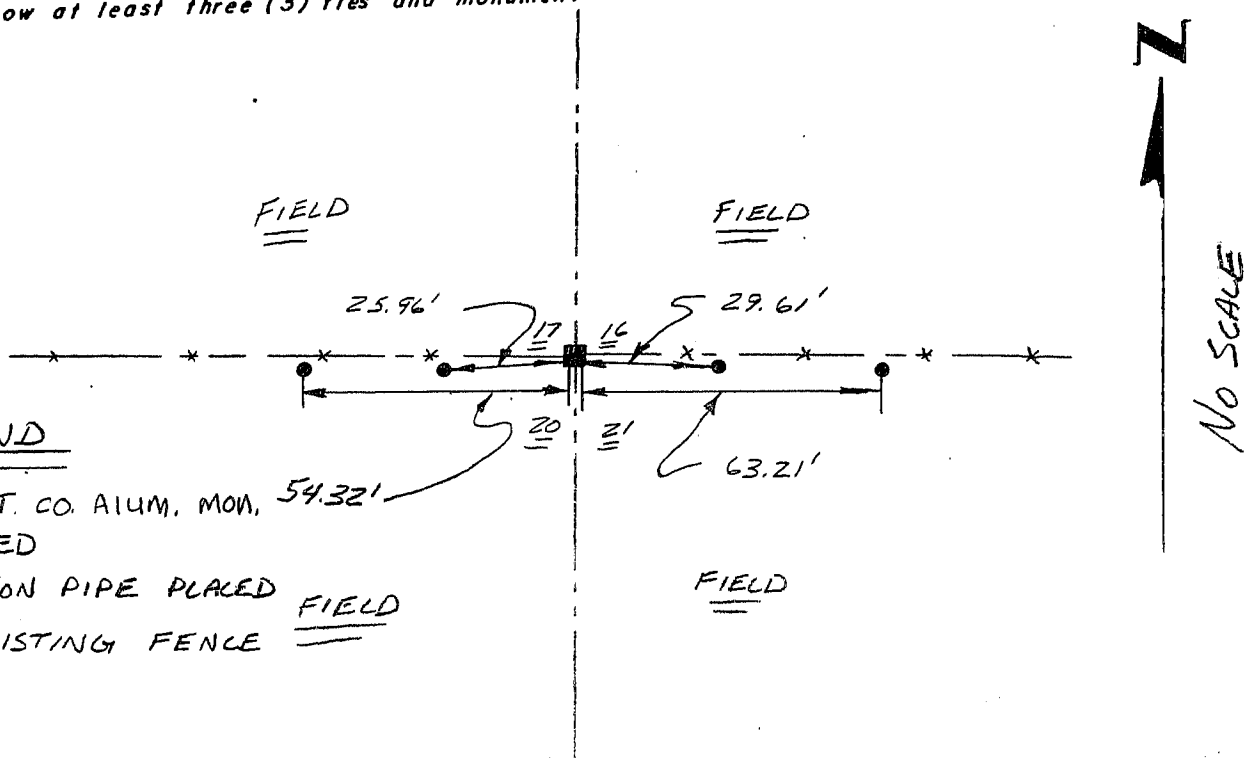
CERTIFIED CORRECT

Larry L. Austin
 Registered Land Surveyor

DATE: 1-16-95

TIE SKETCH

Show at least three (3) ties and monument



LEGEND

- GRANT CO. ALUM. MON. 54.32'
PLACED
- 1" IRON PIPE PLACED FIELD
- × × EXISTING FENCE FIELD