

Survey Monument Record

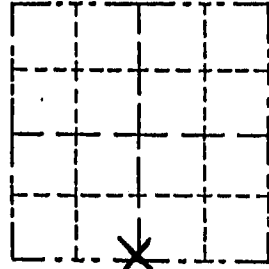
TYPE OF MONUMENT 3/4" X 24" Iron Rod
 STATE PLANE COORDINATES: N _____
 E _____
 ELEVATION — M.S.L. DATUM: _____
 THETA ANGLE: _____
 FIELD BOOK: _____
 PAGE _____

CORNER NO. _____
 SECTION 14
 TOWN 5 NORTH
 RANGE 4 WEST

BASIS FOR MONUMENT LOCATION

(Use reverse side if necessary)

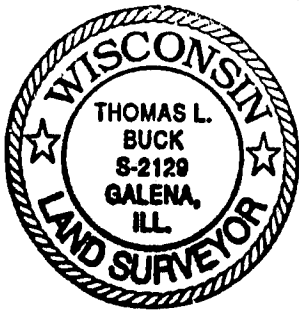
Show info such as: History of corner, with reference to Vol. and pg., dates, surveyor; exact description of monument replaced; if location computed, by taped or EDM traverse; landowner, remarks, etc.



LOCATION
(Indicated by "X")

- FOUND PERPETUATED LOCATION
- OBLITERATED EVIDENCE LOCATION
- LOST CORNER (RESTORED BY PROPORTIONATE METHODS)

I FOUND NO RECORD OF THIS CORNER SINCE THE ORIGINAL GOVERNMENT SURVEY. I PLACED THIS MONUMENT E-W USING A BEST FIT LINE OF OCCUPATION AND N-S BY USING THE FORTY CORNERS TO THE SOUTH TO CONTROL. THIS WAS VERIFIED BY G.P.S. OBSERVATION AND AN E.D.M. TRAVERSE OF SECTIONS 13, 14 + 23



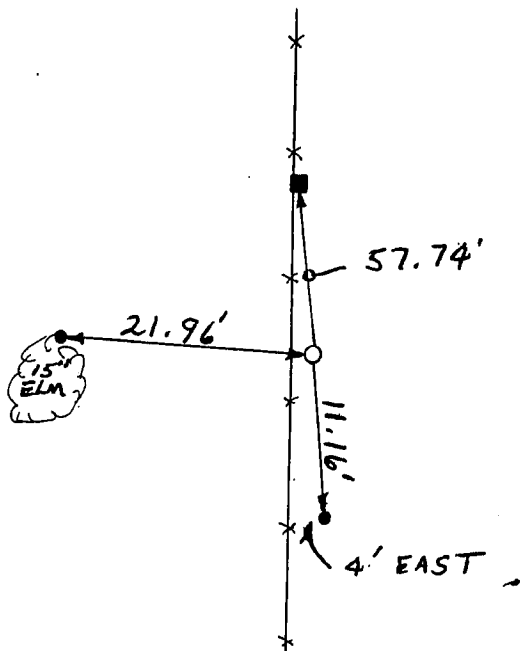
CERTIFIED CORRECT TO THE BEST OF MY KNOWLEDGE AND BELIEF

Thomas L. Buck
 Registered Land Surveyor

DATE: 9/24/98

TIE SKETCH

Show at least three (3) ties and monument



NO SCALE

LEGEND

- = 3/4" X 24" IRON ROD
- = 1/2" IRON ROD
- = PK W/SHINER TOP OF BRACE POST
- *-*- = EXISTING FENCE