

Survey Monument Record

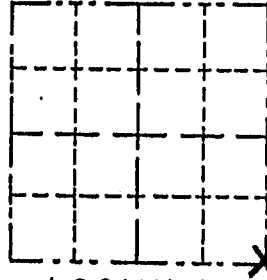
TYPE OF MONUMENT 3/4" X 24" IRON ROD  
 STATE PLANE COORDINATES: N \_\_\_\_\_  
 E \_\_\_\_\_  
 ELEVATION — M.S.L. DATUM: \_\_\_\_\_  
 THETA ANGLE: \_\_\_\_\_  
 FIELD BOOK: \_\_\_\_\_  
 PAGE \_\_\_\_\_

CORNER NO. \_\_\_\_\_  
 SECTION 14  
 TOWN 5 NORTH  
 RANGE 4 WEST

BASIS FOR MONUMENT LOCATION

(Use reverse side if necessary)

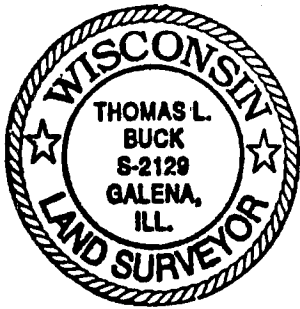
Show info such as: History of corner, with reference to Vol. and pg., dates, surveyor; exact description of monument replaced; if location computed, by taped or EDM traverse; landowner, remarks, etc.



LOCATION  
 (Indicated by "X")

- FOUND PERPETUATED LOCATION
- OBLITERATED EVIDENCE LOCATION
- LOST CORNER (RESTORED BY PROPORTIONATE METHODS)

I FOUND NO RECORD OF THIS CORNER SINCE THE ORIGINAL GOVERNMENT SURVEY. THE MONUMENT WAS PLACED IN THE BEST FIT NORTH-SOUTH OCCUPIED LINE AND USING THE FORTY CORNERS IN SECTIONS 14 & 23 TO CONTROL THE NORTH-SOUTH FALLING. THIS WAS ALL VERIFIED BY GPS OBSERVATION AND AN E.D.M. TRAVERSE OF SECTIONS 13, 14, & 23



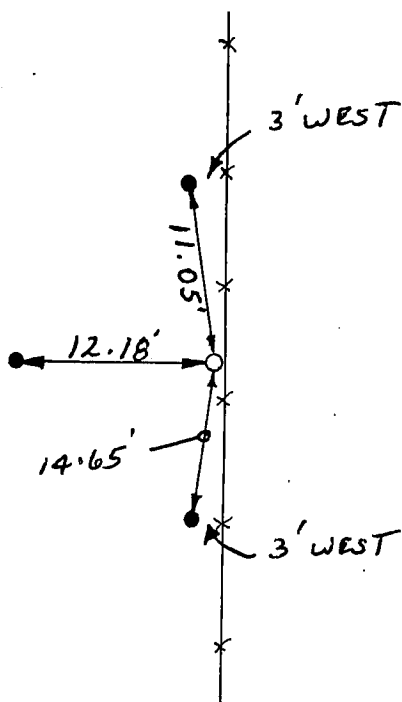
CERTIFIED CORRECT TO THE BEST OF MY KNOWLEDGE AND BELIEF

Thomas Buck  
 Registered Land Surveyor

DATE: 9/24/98

TIE SKETCH

Show at least three (3) ties and monument



NO SCALE  
 LEGENDS

○ = 3/4" X 24" IRON ROD

● = 1/2" IRON ROD

\* — \* = EXISTING FENCE