

REC'D JUL 5 1996

Survey Monument Record

CORNER NO. 61
SECTION 13
TOWN 5N
RANGE 4W

TYPE OF MONUMENT 3/4" X 24" IRON BAR SET

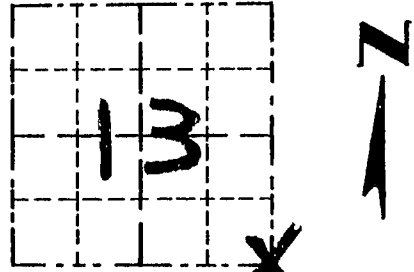
STATE PLANE COORDINATES: N _____
E _____

ELEVATION - M.S.L. DATUM: _____

THETA ANGLE: _____

FIELD BOOK: 95-16

PAGE (5)



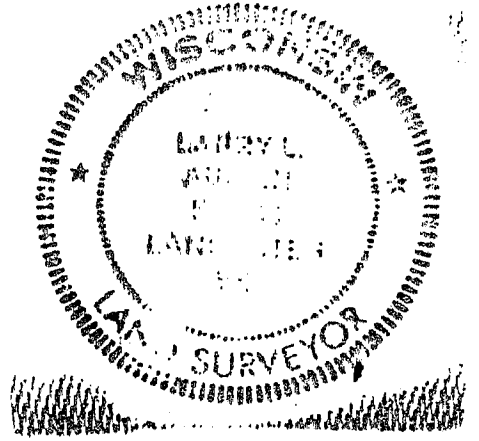
LOCATION
(Indicated by "X")

BASIS FOR MONUMENT LOCATION

(Use reverse side if necessary)

- NO RECORD FOUND SINCE ORIGINAL SURVEY BY SIBLEY IN 1832
- NORTH-SOUTH LOCATION PROPORTIONED FROM SOUTHEAST CORNER OF SECTION 24 AND THE NORTHEAST CORNER OF THE SE 1/4, OF THE SE 1/4 OF SECTION 13
- EAST-WEST LOCATION WAS SET ON-LINE BETWEEN SOUTHEAST CORNER OF SECTION 24 AND THE NE COR., OF THE SE 1/4, OF THE SE 1/4 OF SECTION 13
- CORNER VERIFIED BY EDM. TRAVERSE OF THE AREA.

SEAL:



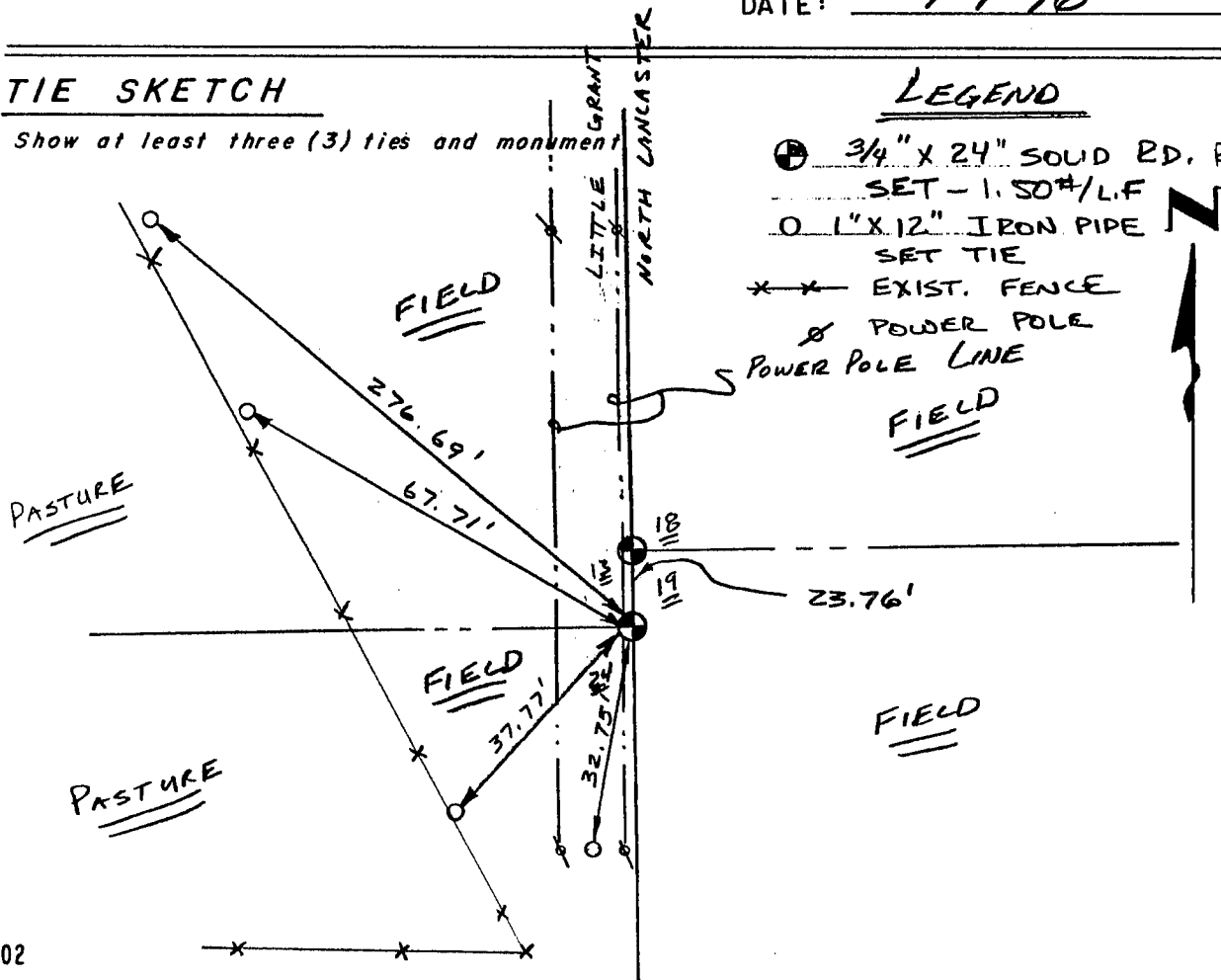
CERTIFIED CORRECT

Larry L. ...
Registered Land Surveyor

DATE: 1-9-96

TIE SKETCH

Show at least three (3) ties and monument



LEGEND

- ⊕ 3/4" X 24" SQUAD RD. REBAR SET - 1.50# L.F.
- 1" X 12" IRON PIPE SET TIE
- EXIST. FENCE
- ⊗ POWER POLE
- POWER POLE LINE

NO SCALE

REC'D JUL 5 1996

Survey Monument Record

TYPE OF MONUMENT 3/4" x 24" IRON BAR SET

STATE PLANE COORDINATES: N _____
E _____

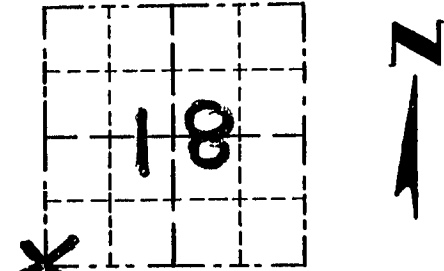
ELEVATION — M.S.L. DATUM: _____

THETA ANGLE: _____

FIELD BOOK: 95-16

PAGE (5)

CORNER NO. 73
SECTION 18
TOWN 5N
RANGE 3W



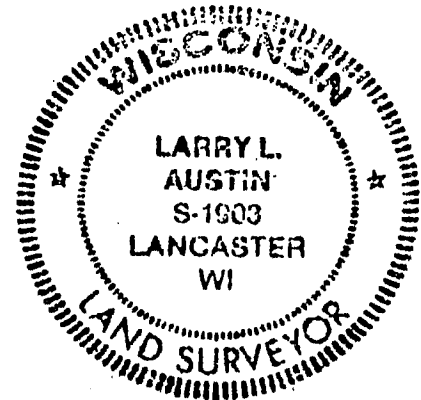
LOCATION
(Indicated by "X")

BASIS FOR MONUMENT LOCATION

(Use reverse side if necessary)

- NO RECORD FOUND SINCE ORIGINAL SURVEY BY HARVEY PARKE IN 1833.
- CORNER WAS RESET ON THE EAST LINE OF THE SE 1/4 OF SEC. 13, T5N, R4W, AND AT THE RECORDED DISTANCE OF 36 LINKS (23.76') NORTH OF SE COR, SEC 13, T5N, R4W.
- CORNER WAS VERIFIED BY EDM TRAVERSE OF THE AREA.

SEAL:



CERTIFIED CORRECT

Larry L. Austin
Registered Land Surveyor

DATE: 3/5/96

TIE SKETCH

Show at least three (3) ties and monument

