

Survey Monument Record

CORNER NO. 41
 SECTION 18
 TOWN 5N
 RANGE 4W

TYPE OF MONUMENT COUNTY MONUMENT SET

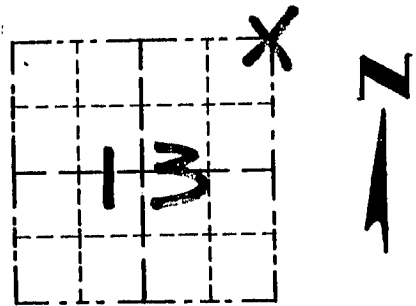
STATE PLANE COORDINATES: N _____
 E _____

ELEVATION — M.S.L. DATUM: _____

THETA ANGLE: _____

FIELD BOOK: 95-16

PAGE (5)



LOCATION
 (Indicated by "X")

BASIS FOR MONUMENT LOCATION

(Use reverse side if necessary)

- CORNER ORIGINALLY SET IN 1832 BY SIBLEY.

SEAL:

- CORNER RESET BASED ON PROPORTIONAL MEASUREMENTS TO OCCUPIED 40 CORNERS EAST + WEST FOR N-S LOCATION AND FOR E-W LOCATION A PROJECTION OF A LINE THRU THE EAST 1/4 CORNER OF SECTION 12 AND THE NORTHWEST CORNER OF THE SW 1/4, SW 1/4 OF SECTION 7.



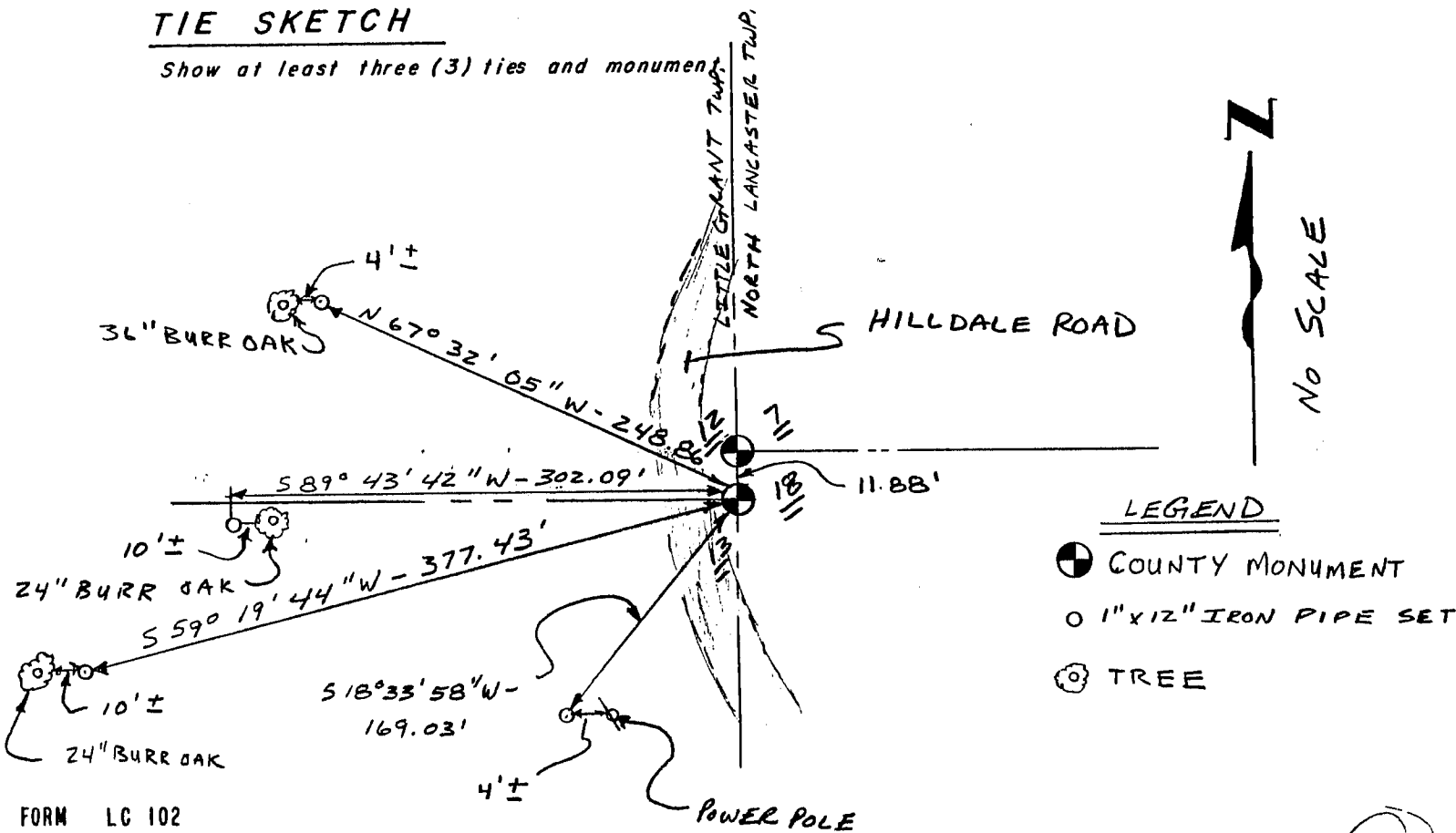
- VERIFIED BY EDM TRAVERSE OF THE AREA.

CERTIFIED CORRECT

Larry L. Austen
 Registered Land Surveyor
 DATE: 3/5/96

TIE SKETCH

Show at least three (3) ties and monument



- LEGEND
- ⊙ COUNTY MONUMENT
 - 1" x 1/2" IRON PIPE SET
 - ⊗ TREE

REC'D JUL 5 1996

Survey Monument Record

CORNER NO. 53
SECTION 18
TOWN 5N
RANGE 3W

TYPE OF MONUMENT COUNTY MONUMENT SET

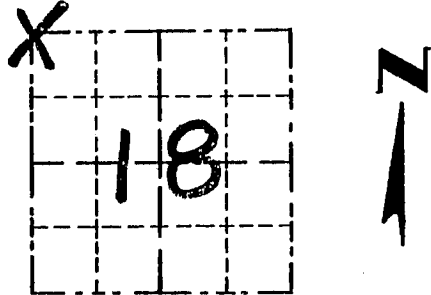
STATE PLANE COORDINATES: N _____
E _____

ELEVATION — M.S.L. DATUM: _____

THETA ANGLE: _____

FIELD BOOK: 95-16

PAGE (5)



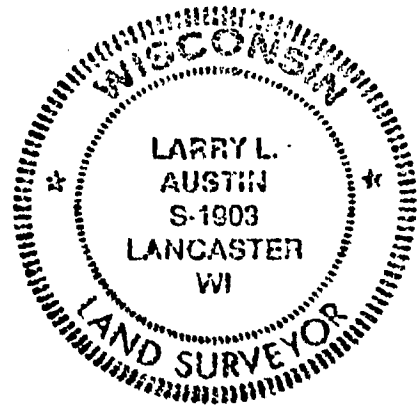
LOCATION
(Indicated by "X")

BASIS FOR MONUMENT LOCATION

(Use reverse side if necessary)

- NO RECORD FOUND SINCE ORIGINAL SURVEY BY HARVEY PARKE IN 1833.
- CORNER RESET ON THE EAST LINE OF THE SE 1/4 OF SECTION 12, T5N, R4W AND AT THE RECORDED CLOSING CORNER DISTANCE OF 18 LINKS (11.88') FROM THE SE COR OF SAID SECTION 12.
- VERIFIED BY EDM TRAVERSE OF THE AREA.

SEAL:



CERTIFIED CORRECT

Larry L. Austin
Registered Land Surveyor

DATE: 3/5/96

TIE SKETCH

Show at least three (3) ties and monument

