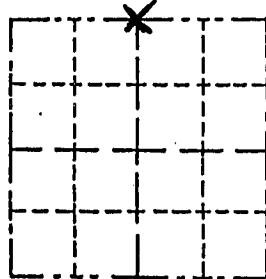


Survey Monument Record

TYPE OF MONUMENT 3/4" X 24" Iron Rod
 STATE PLANE COORDINATES: N _____
 E _____
 ELEVATION — M.S.L. DATUM: _____
 THETA ANGLE: _____
 FIELD BOOK: _____
 PAGE _____

CORNER NO. _____
 SECTION 14
 TOWN 5 NORTH
 RANGE 4 WEST



BASIS FOR MONUMENT LOCATION

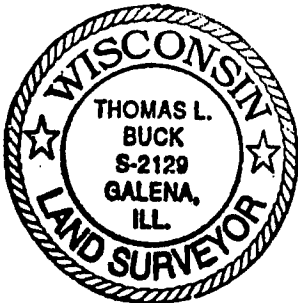
(Use reverse side if necessary)

Show info such as: History of corner, with reference to Vol. and pg., dates, surveyor; exact description of monument replaced; if location computed, by taped or EDM traverse; landowner, remarks, etc.

LOCATION
 (Indicated by "X")

- FOUND PERPETUATED LOCATION
- OBLITERATED EVIDENCE LOCATION
- LOST CORNER (RESTORED BY PROPORTIONATE METHODS)

I FOUND NO RECORD OF THIS CORNER SINCE THE ORIGINAL GOVERNMENT SURVEY. I PLACED THIS MONUMENT AT THE OCCUPIED CORNER. THIS CORNER WAS VERIFIED BY G.P.S. OBSERVATIONS AND AN E.D.M TRAVERSE OF SECTIONS 13, 14 & 23



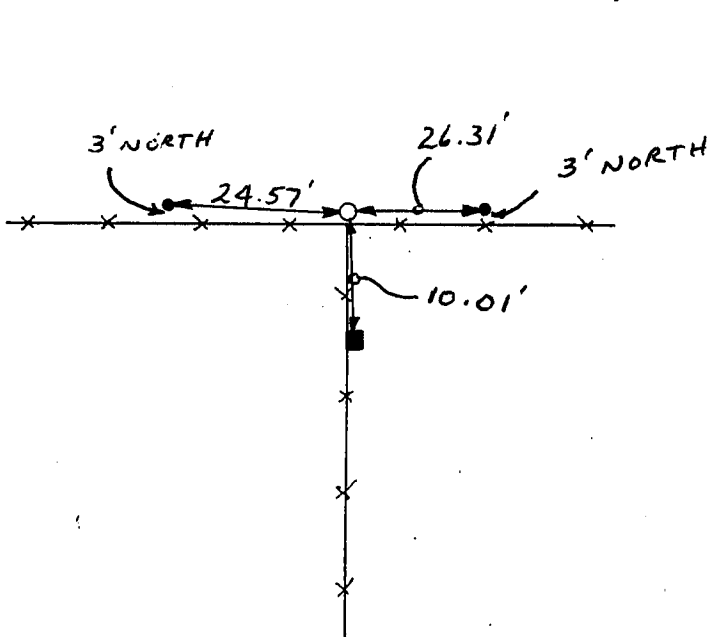
CERTIFIED CORRECT TO THE BEST OF MY KNOWLEDGE AND BELIEF

Thomas L. Buck
 Registered Land Surveyor

DATE: 9/24/98

TIE SKETCH

Show at least three (3) ties and monument



NO SCALE

LEGEND

○ = 3/4" X 24" IRON ROD

● = 1/2" IRON ROD

■ = P.K. w/SHINER TOP OF BRACE POST

* * = EXISTING FENCE