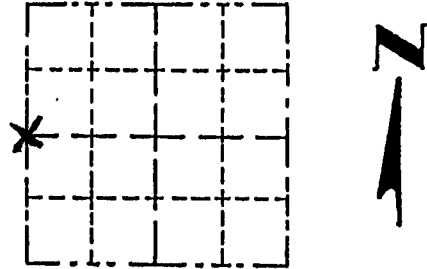


# Survey Monument Record

TYPE OF MONUMENT 3/4" X 24" IRON ROD  
 STATE PLANE COORDINATES: N \_\_\_\_\_  
 E \_\_\_\_\_  
 ELEVATION — M.S.L. DATUM: \_\_\_\_\_  
 THETA ANGLE: \_\_\_\_\_  
 FIELD BOOK: \_\_\_\_\_  
 PAGE \_\_\_\_\_

CORNER NO. \_\_\_\_\_  
 SECTION 10  
 TOWN 5 NORTH  
 RANGE 4 WEST



LOCATION  
 (Indicated by "X")

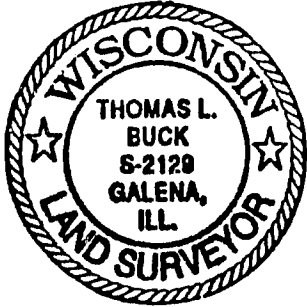
- FOUND PERPETUATED LOCATION
- OBLITERATED EVIDENCE LOCATION
- LOST CORNER (RESTORED BY PROPORTIONATE METHODS)

## BASIS FOR MONUMENT LOCATION

(Use reverse side if necessary)

Show info such as: History of corner, with reference to Vol. and pg., dates, surveyor; exact description of monument replaced; if location computed, by taped or EDM traverse; landowner, remarks, etc.

I FOUND NO HISTORY OF THIS CORNER SINCE THE ORIGINAL GOVERNMENT SURVEY. I SET THIS CORNER BY USING EXISTING PHYSICAL EVIDENCE AND PROPORTIONATE MEASUREMENTS FROM AN E. D. M. TRAVERSE OF SECTIONS 4, 9 & 10.

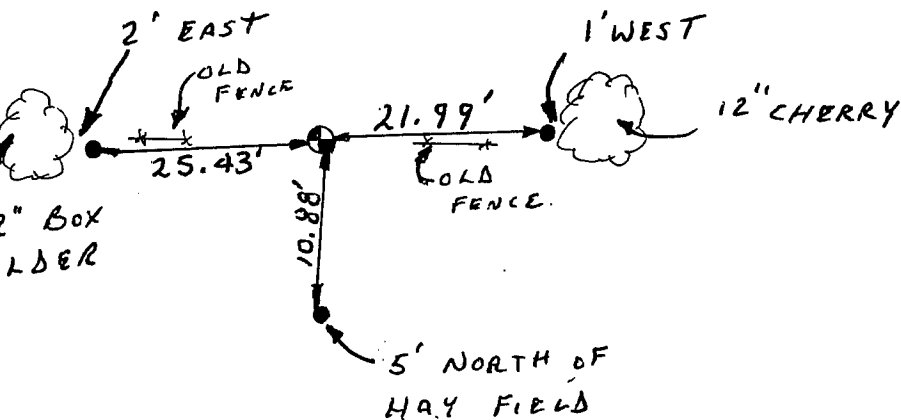


CERTIFIED CORRECT TO THE BEST OF MY KNOWLEDGE AND BELIEF

Thomas L. Buck  
 Registered Land Surveyor  
 DATE: 10/15/98

## TIE SKETCH

Show at least three (3) ties and monument



NO SCALE

### LEGEND

- = 3/4" X 24" IRON ROD
- = 1/2" IRON ROD