

U.S. PUBLIC LAND SURVEY MONUMENT RECORD - GRANT COUNTY, WI

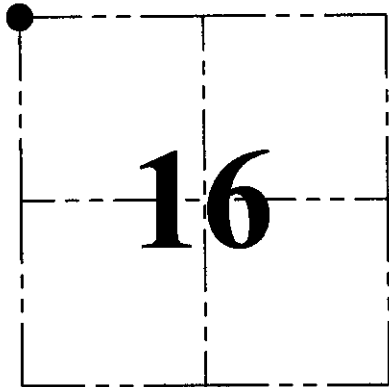
Section 16, Town 5 North Range 4 West, Town of Little Grant

CERTIFICATE:

I, Aaron J. Austin, Wisconsin Professional Land Surveyor, do hereby certify that the corner location on this record was determined by me and/or under my direct supervision and that this U.S. Public Land Survey Monument Record is correct and complete to the best of my knowledge and belief.

Dated this 3rd day of June, 2015.

Aaron J. Austin
 Aaron J. Austin, S-2022
 LANCASTER, WI
 LAND SURVEYOR



● = CORNER LOCATION

HISTORY OF CORNER ESTABLISHMENT:

- 1833-Harvey Parke set original corner.
- 1882-J.C. Scott tied to the corner on a Survey filed in Book D, Page 113.
- 1994-Larry Austin tied to the corner on a Survey filed in Book U, Page 9 and 28.
- 1994-Larry Austin reset the corner and prepared a Grant County Survey Monument Record.
- 2003-Larry Austin tied to the corner on a Survey filed in Book 13, Page 38 and 48.
- 2012-Jimmy Rose tied to the corner on a Survey filed in Book 32, Page 54.

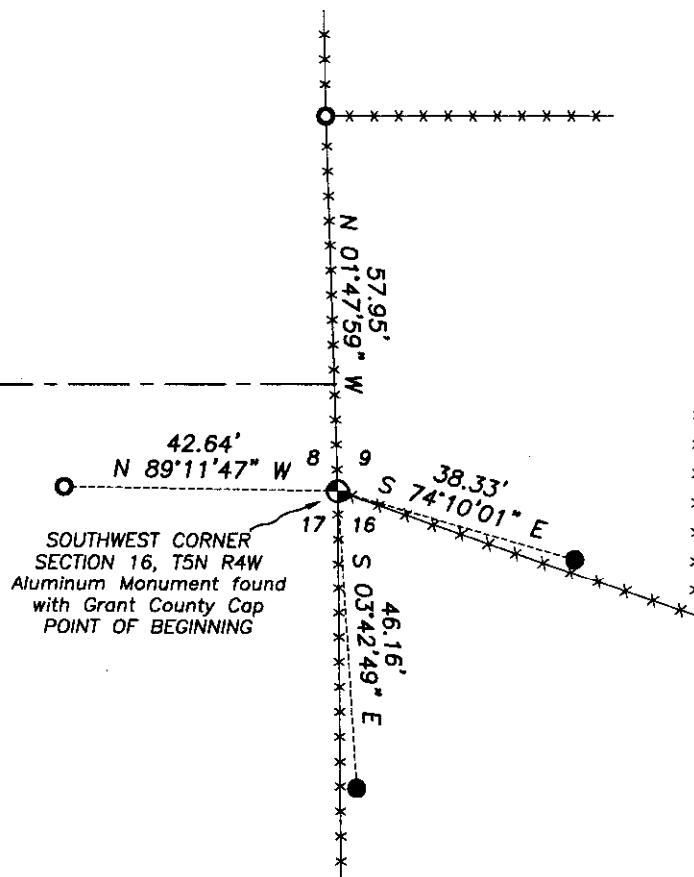
DESCRIPTION OF CORNER EVIDENCE FOUND:

I found the Rebar with Grant County Aluminum Cap in place and 2 witness corners. The other 2 witness corners could not be recovered. I set 2 additional witness corners and verified this location with E.D.M. and G.P.S. methods.

DESCRIPTION OF CORNER AND WITNESS MONUMENTS, references and accessories used to perpetuate the original or re-established location of this corner. Witnesses to corner location Shane Austin

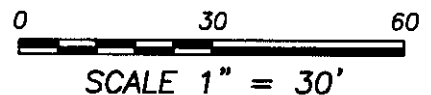
SKETCH:

Centerline of IRISH LANE
 This portion appears to have minimal maintenance.



LEGEND

- ⊕ Section Corner—as designated
- 1/2" x 12" Rebar set with red plastic "TIE" cap
- 1/2" Rebar found



4211 HWY 81 E, LANCASTER, WI 53813
 PHONE: 608-723-6363 FAX: 608-723-6702

JOB NO: 15s047
 H:\CRD\15s047
 H:\TIE\T5NR4W\49

FIELDBOOK: TDSR
 DRAWN BY: AJ AUSTIN
 CREW: SW AUSTIN

GRANT COUNTY

Survey Monument Record

TYPE OF MONUMENT GRANT Co. ALUM. MON.
 STATE PLANE COORDINATES: N _____
 E _____
 ELEVATION — M.S.L. DATUM: _____
 THETA ANGLE: _____
 FIELD BOOK: 94-00
 PAGE _____

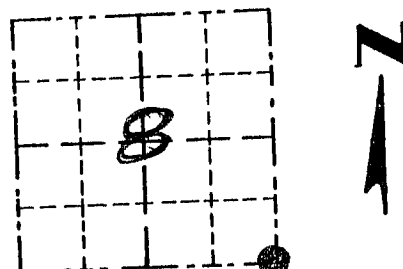
CORNER NO. _____
 SECTION 8
 TOWN 5N
 RANGE 4W

BASIS FOR MONUMENT LOCATION

(Use reverse side if necessary)

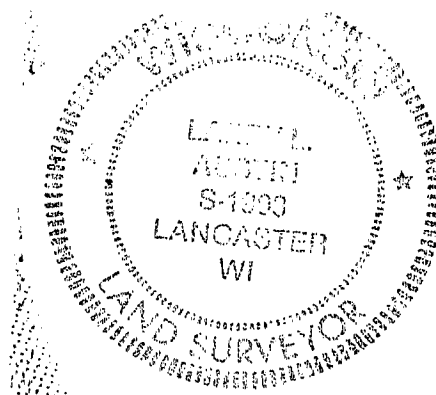
Show info such as: History of corner, with reference to Vol. and pg., dates, surveyor; exact description of monument replaced; if location computed, by taped or EDM traverse; landowner, remarks, etc.

NO RECORD FOUND OF CORNER SINCE ORIG. SURVEYS; CORNER WAS ESTABLISHED BASED ON OCCUPATIONAL EVIDENCE & VERIFIED BY EDM TRAVERSE OF THE AREA



LOCATION
(Indicated by "X")

SEAL:



CERTIFIED CORRECT
Larry A. Austin
 Registered Land Surveyor
 DATE: 1/31/94

TIE SKETCH

Show at least three (3) ties and monument

- LEGEND
- GRANT CO. ALUM. MON. PLACED
 - 3/8" X 12" SPIKES PLACED
 - XX EXISTING FENCE

