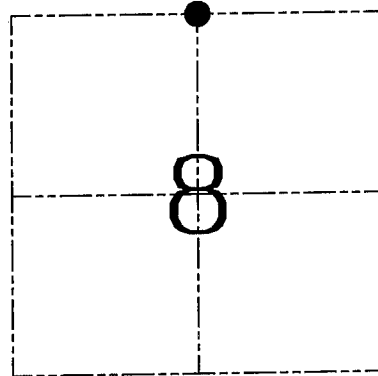


**U.S. PUBLIC LAND SURVEY MONUMENT RECORD – GRANT COUNTY, WI**  
**Section 8, Town 5 North Range 4 West, Town of Little Grant**

CERTIFICATE

I, Larry L. Austin, do hereby certify that the corner location on this record was determined by me and/or under my direct supervision and that this U.S. public land survey monument record is correct and complete to the best of my knowledge and belief.

Dated this 6th day of April, 2005



● = CORNER LOCATION

HISTORY OF CORNER ESTABLISHMENT

Corner was originally set in 1833 by Harvey Parke.  
 No other record of the corner was found.

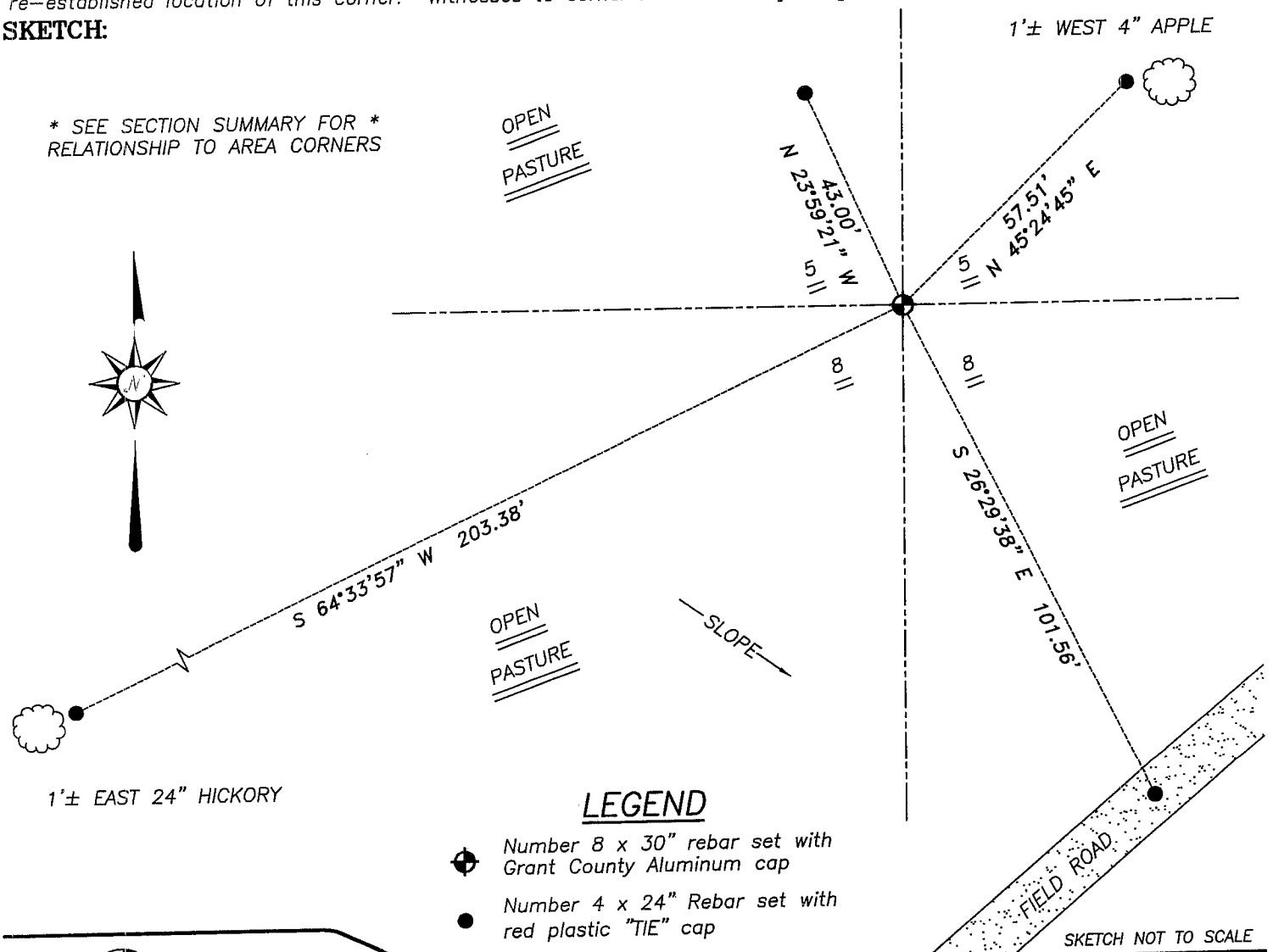
DESCRIPTION OF CORNER EVIDENCE FOUND

I reset the corner proportionately and on-line between the Northwest and Northeast corners. Verified this location using EDM & GPS methods.

DESCRIPTION OF CORNER AND WITNESS MONUMENTS, references and accessories used to perpetuate the original or re-established location of this corner. Witnesses to corner location Bobby Sedgwick & Shelby Blindert & Brad Digman

**SKETCH:**

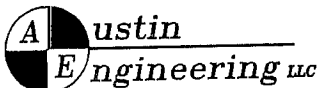
\* SEE SECTION SUMMARY FOR \*  
 RELATIONSHIP TO AREA CORNERS



**LEGEND**

- Number 8 x 30" rebar set with Grant County Aluminum cap
- Number 4 x 24" Rebar set with red plastic "TIE" cap

SKETCH NOT TO SCALE



4211 HWY 81 E, LANCASTER, WI 53813  
 PHONE 608-723-6363 FAX 608-723-6702

JOB NUMBER 04S324  
 FIELDBOOK: TDSR, 2307  
 G:\T5NR4W\28  
 H:\TIE\T5NR4W\30

DRAWN BY: SW AUSTIN  
 APPROVED: LL AUSTIN