

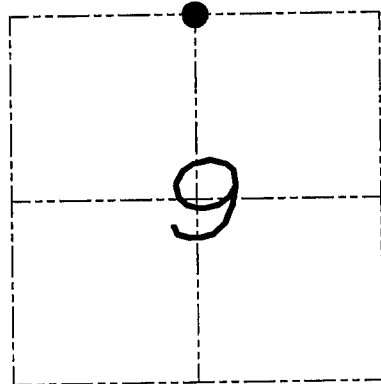
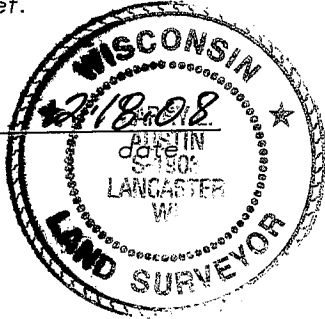
U.S. PUBLIC LAND SURVEY MONUMENT RECORD

Section 9, Town 5 North Range 4 West, Town of Little Grant, Grant County, Wisconsin

CERTIFICATE

I, Larry L. Austin, do hereby certify that the corner location on this record was determined by me and/or under my direct supervision and that this U.S. public land survey monument record is correct and complete to the best of my knowledge and belief.

Larry L. Austin
Larry L. Austin, S-1903



● = CORNER LOCATION

HISTORY OF CORNER

Corner was originally set in 1833 by Parke.
No other record of the corner was found.

CORNER EVIDENCE FOUND

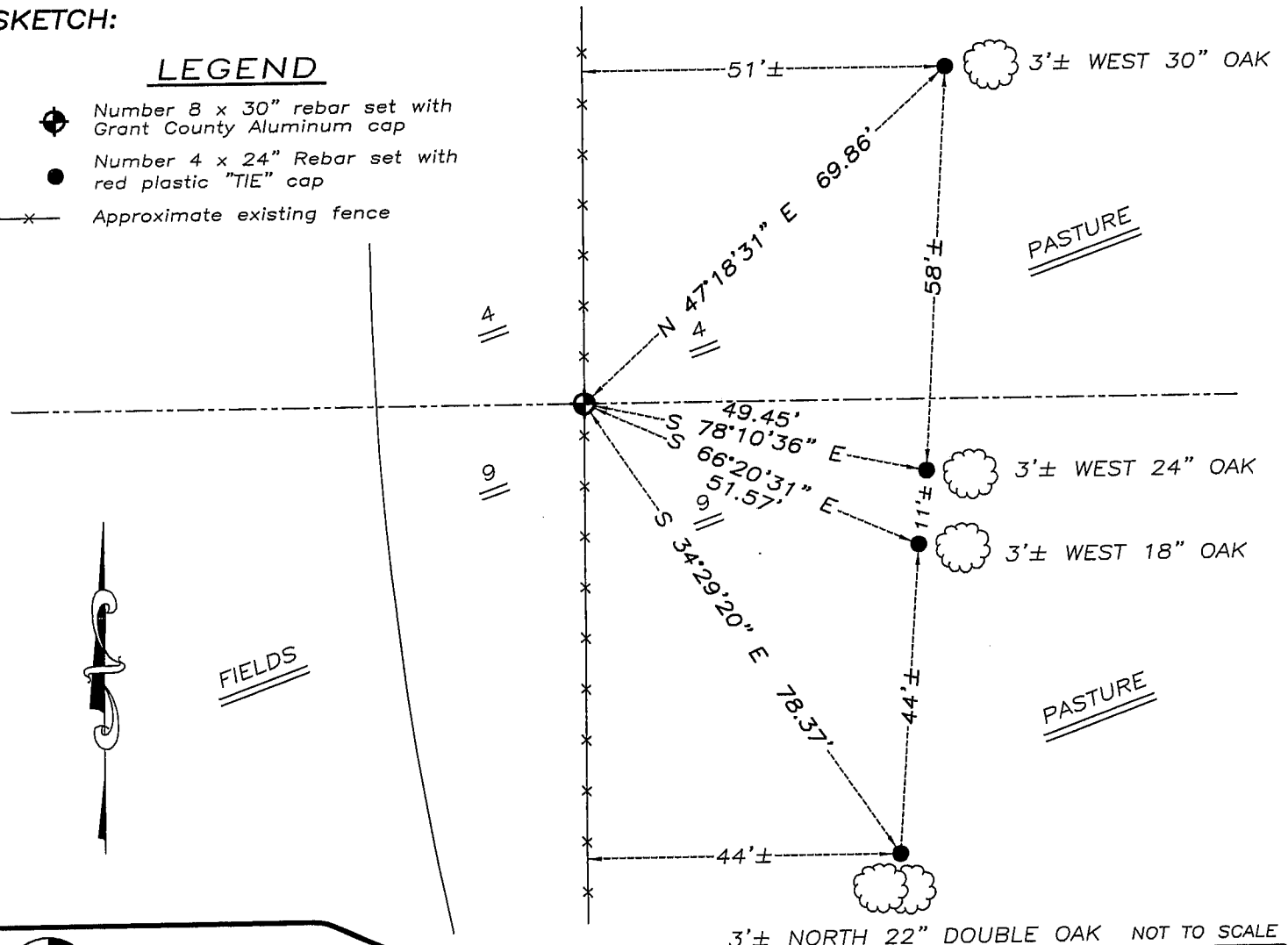
I reset the corner at an occupied fence North-South for Easting. Northing was established on-line between the Northwest and Northeast corners of Section 9. Verified this location using EDM & GPS methods.

DESCRIPTION OF CORNER AND WITNESS MONUMENTS, references and accessories used to perpetuate the original or re-established location of this corner. Witnesses to monument location Bobby Sedgwick & Brad Digman & Shelby Blindert

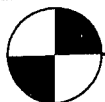
SKETCH:

LEGEND

- ⊕ Number 8 x 30" rebar set with Grant County Aluminum cap
- Number 4 x 24" Rebar set with red plastic "TIE" cap
- x— Approximate existing fence



3'± NORTH 22" DOUBLE OAK NOT TO SCALE



Austin
Engineering LLC

4211 HWY 81 E, LANCASTER, WI 53813
PHONE 608-723-6363 FAX 608-723-6702

JOB NUMBER 07S100
FIELDBOOK: TDSR, 2702
G:\T5NR4W\28
H:\TIE\T5NR4W\28

DRAWN BY: SW AUSTIN
APPROVED: LL AUSTIN