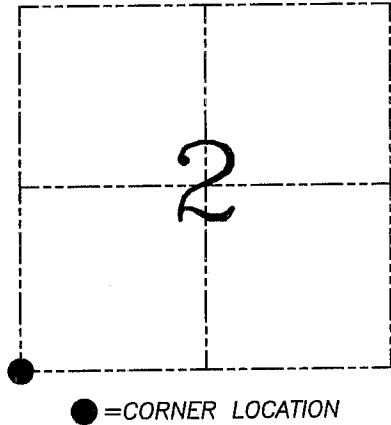
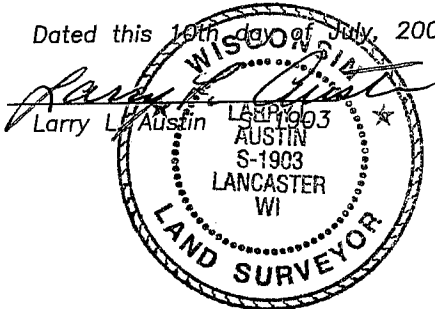


**U.S. PUBLIC LAND SURVEY MONUMENT RECORD – GRANT COUNTY, WI**  
**Section 2, Town 5 North Range 4 West, Town of Little Grant**

CERTIFICATE

I, Larry L. Austin, do hereby certify that the corner location on this record was determined by me and/or under my direct supervision and that this U.S. public land survey monument record is correct and complete to the best of my knowledge and belief.

Dated this 16th day of July, 2004



HISTORY OF CORNER ESTABLISHMENT

Corner was originally set in 1833 by Parke.  
 In 1998 Buck set a Number 6 iron bar at this location.

DESCRIPTION OF CORNER EVIDENCE FOUND

I did not find the Number 6 iron bar. I also did not accept Buck's location because he did not use existing physical evidence. The location below fit adjoining corners within Section 2. Verified this location using EDM & GPS methods.

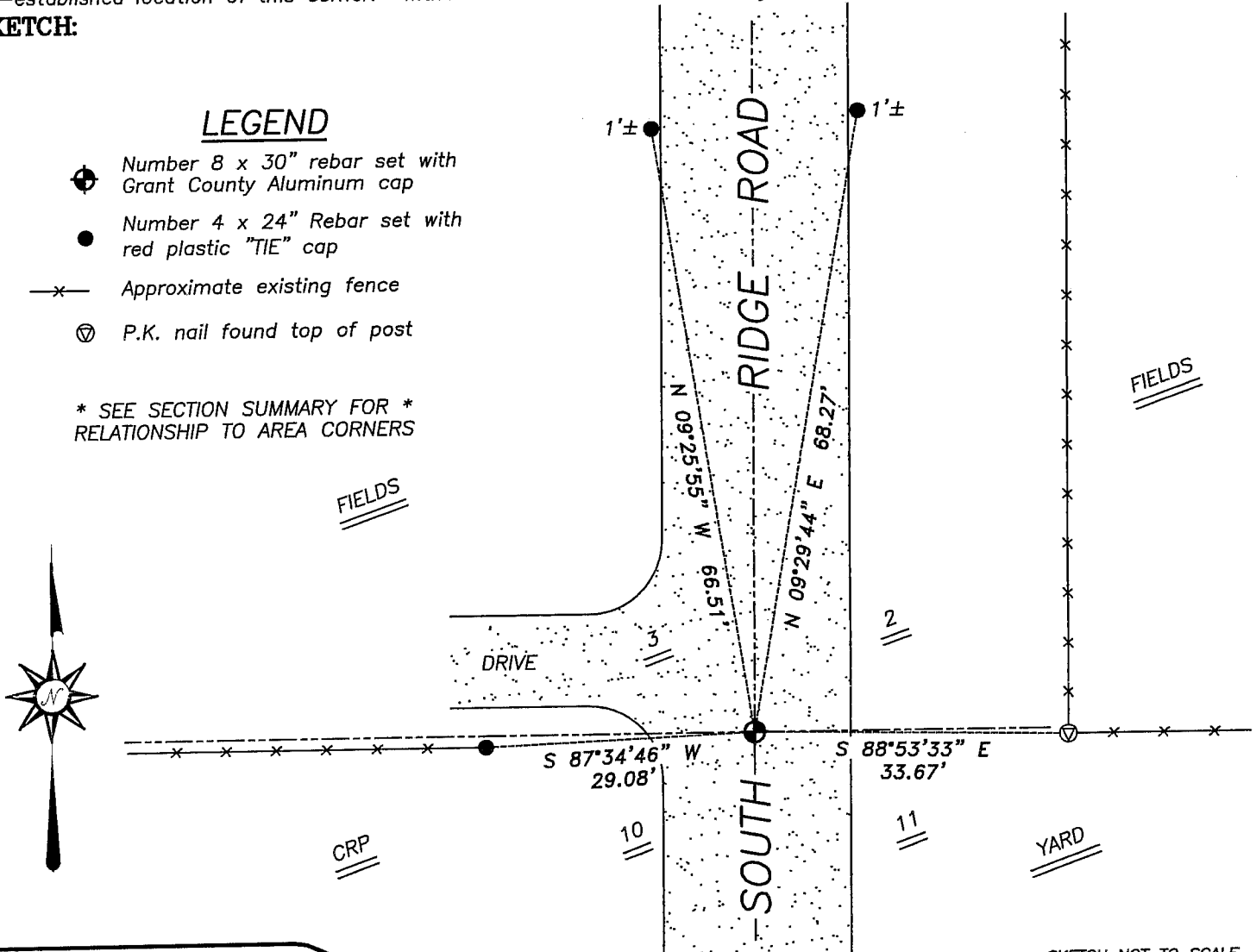
DESCRIPTION OF CORNER AND WITNESS MONUMENTS, references and accessories used to perpetuate the original or re-established location of this corner. Witnesses to corner location Bobby Sedgwick & Brad Digman & Brad Hazen

**SKETCH:**

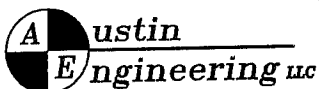
LEGEND

- Number 8 x 30" rebar set with Grant County Aluminum cap
- Number 4 x 24" Rebar set with red plastic "TIE" cap
- x— Approximate existing fence
- ⊙ P.K. nail found top of post

\* SEE SECTION SUMMARY FOR \*  
 RELATIONSHIP TO AREA CORNERS



SKETCH NOT TO SCALE



4211 HWY 81 E, LANCASTER, WI 53813  
 PHONE 608-723-6363 FAX 608-723-6702

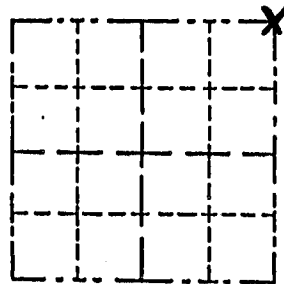
JOB NUMBER 04S016  
 FIELDBOOK: TSDR, 2332  
 G:\T5NR4W\02  
 H:\TIE\T5NR4W\25

DRAWN BY: SW AUSTIN  
 APPROVED: LL AUSTIN

# Survey Monument Record

TYPE OF MONUMENT 3/4" X 24" Iron Rod  
 STATE PLANE COORDINATES: N \_\_\_\_\_  
 E \_\_\_\_\_  
 ELEVATION — M.S.L. DATUM: \_\_\_\_\_  
 THETA ANGLE: \_\_\_\_\_  
 FIELD BOOK: \_\_\_\_\_  
 PAGE \_\_\_\_\_

CORNER NO. \_\_\_\_\_  
 SECTION 10  
 TOWN 5 NORTH  
 RANGE 4 WEST



## BASIS FOR MONUMENT LOCATION

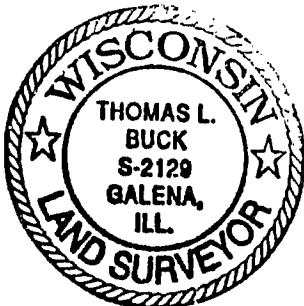
(Use reverse side if necessary)

Show info such as: History of corner, with reference to Vol. and pg., dates, surveyor; exact description of monument replaced; if location computed, by taped or EDM traverse; landowner, remarks, etc.

LOCATION  
 (Indicated by "X")

- FOUND PERPETUATED LOCATION
- OBTAINED EVIDENCE LOCATION
- LOST CORNER (RESTORED BY PROPORTIONATE METHODS)

I FOUND NO HISTORY OF THIS CORNER SINCE THE ORIGINAL GOVERNMENT SURVEY. I SET THIS MONUMENT BY USING EXISTING PHYSICAL EVIDENCE AND PROPORTIONATE MEASUREMENTS FROM AN E.D.M. TRAVERSE OF SECTIONS 4, 10 + 9.



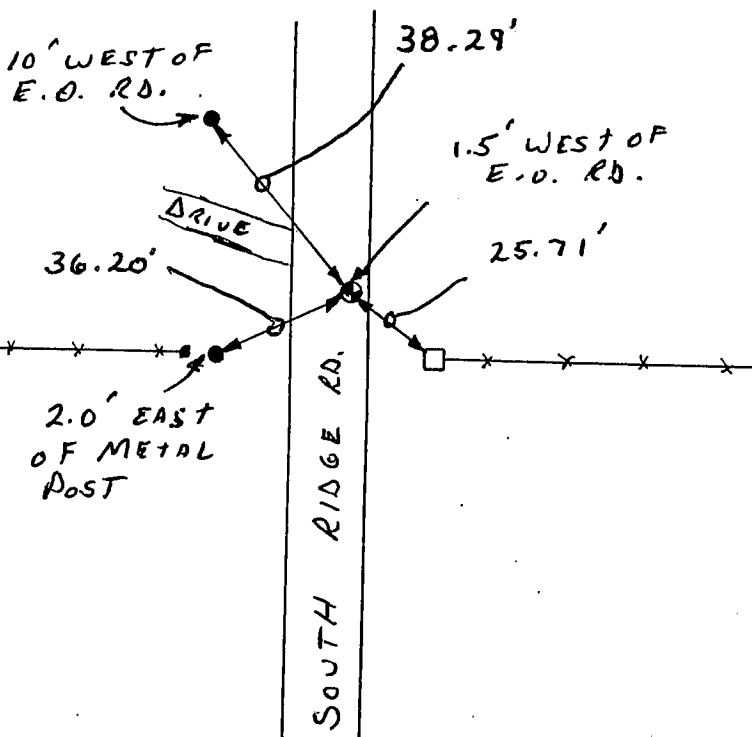
CERTIFIED CORRECT TO THE BEST  
 OF MY KNOWLEDGE AND BELIEF

Thomas L. Buck  
 Registered Land Surveyor

DATE: 10 / 15 / 1980

## TIE SKETCH

Show at least three (3) ties and monument



NO SCALE

⊙ = 3/4" X 24" Iron Rod

● = 1/2" Iron Rod

□ = P.K. + SHINER ON TOP OF POST

\* — \* = EXISTING FENCE