

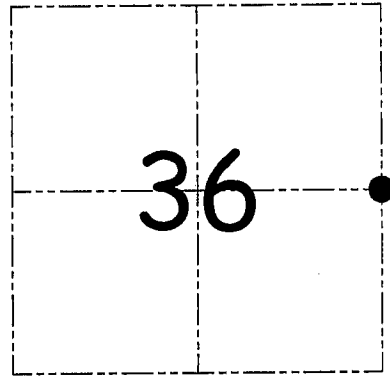
**U.S. PUBLIC LAND SURVEY MONUMENT RECORD – GRANT COUNTY, WI**  
**Section 36, Town 5 North Range 3 West, Town of North Lancaster**

CERTIFICATE

I, Larry L. Austin, do hereby certify that the corner location on this record was determined by me and/or under my direct supervision and that this U.S. public land survey monument record is correct and complete to the best of my knowledge and belief.

Dated this 3rd day of July, 2006

*Larry L. Austin*  
 Larry L. Austin S-1903



● = CORNER LOCATION

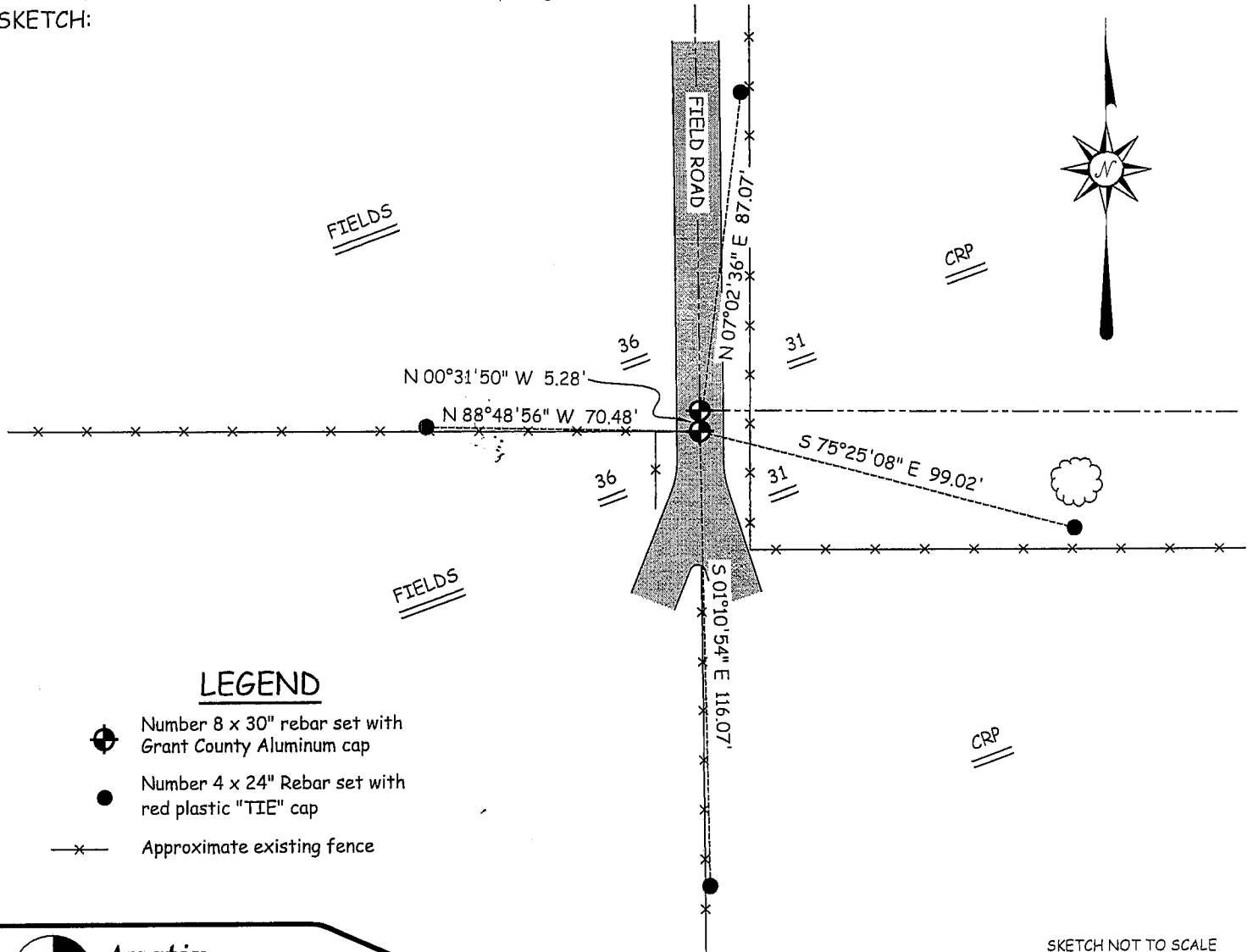
HISTORY OF CORNER ESTABLISHMENT

Corner was originally set by Lyon.  
 No other record of the corner was found.

DESCRIPTION OF CORNER EVIDENCE FOUND

I found and accepted an occupied location for this corner after an EDM & GPS traverse of the area.

DESCRIPTION OF CORNER AND WITNESS MONUMENTS, references and accessories used to perpetuate the original or re-established location of this corner. Witnesses to corner location Bobby Sedgwick & Shane Austin & Brad Digman  
 SKETCH:



LEGEND

- Number 8 x 30" rebar set with Grant County Aluminum cap
- Number 4 x 24" Rebar set with red plastic "TIE" cap
- x— Approximate existing fence

SKETCH NOT TO SCALE



**Austin**  
**Engineering LLC**

4211 HWY 81 E, LANCASTER, WI 53813  
 PHONE 608-723-6363 FAX 608-723-6702

JOB NUMBER 06s110  
 FIELDBOOK: TDSR, 2601  
 G:\T5NR2W\32  
 H:\TIE\T5NR3W\120

DRAWN BY: SW AUSTIN  
 APPROVED: LL AUSTIN

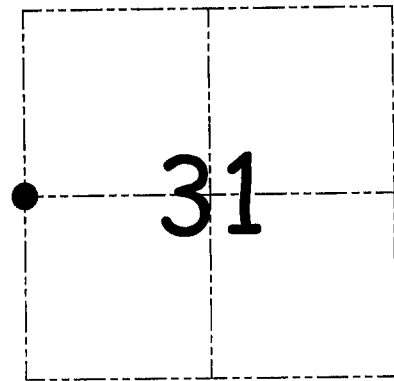
**U.S. PUBLIC LAND SURVEY MONUMENT RECORD – GRANT COUNTY, WI**  
**Section 31, Town 5 North Range 2 West, Town of Liberty**

CERTIFICATE

I, Larry L. Austin, do hereby certify that the corner location on this record was determined by me and/or under my direct supervision and that this U.S. public land survey monument record is correct and complete to the best of my knowledge and belief.

Dated this 3rd day of July, 2006

*Larry L. Austin*  
 Larry L. Austin S-1903



● = CORNER LOCATION

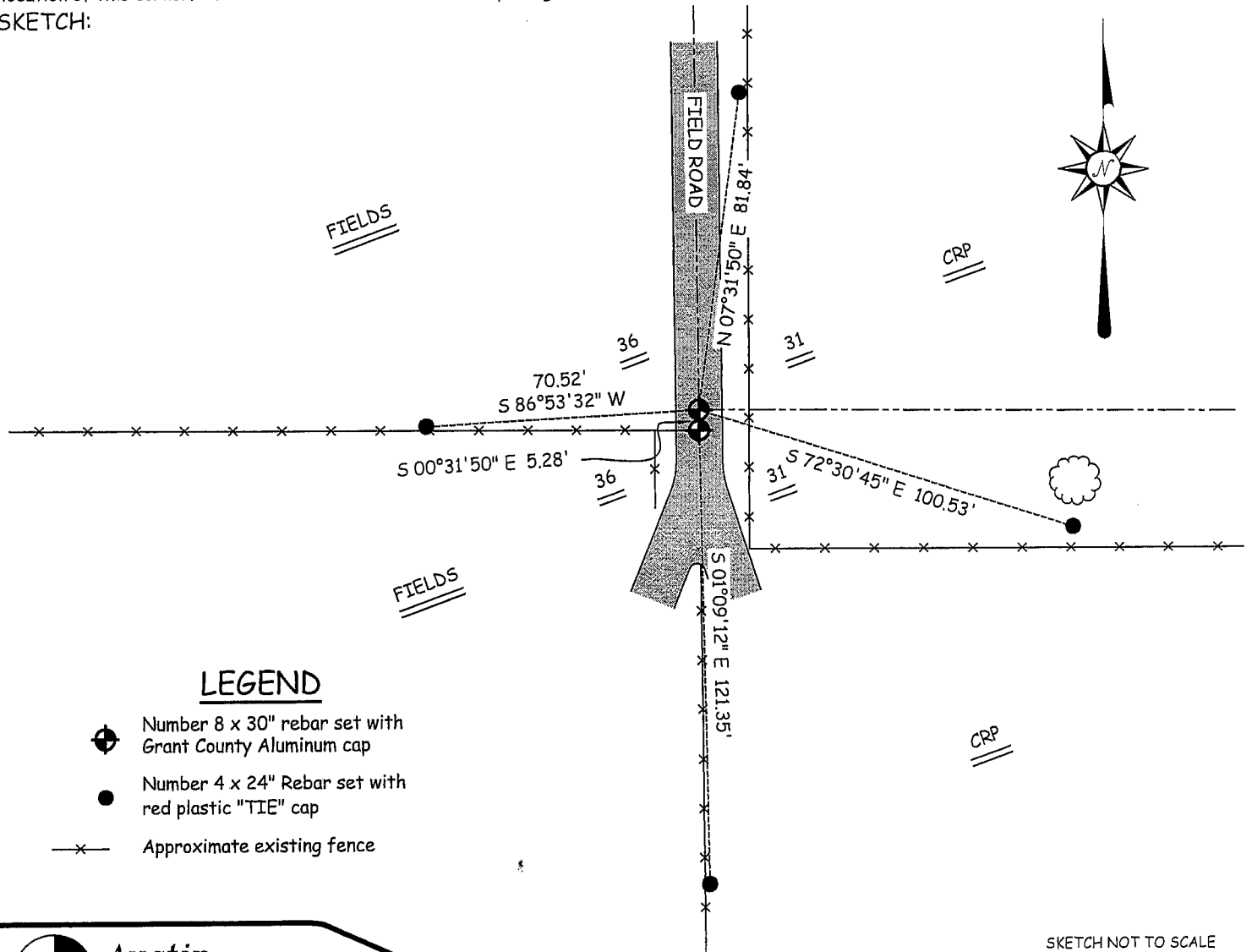
HISTORY OF CORNER ESTABLISHMENT

Corner was never originally set.  
 No recent records of the corner were found.

DESCRIPTION OF CORNER EVIDENCE FOUND

I reset the corner at the proportioned offset from the existing West 1/4 of Section 36. Verified this location using EDM & GPS methods.

DESCRIPTION OF CORNER AND WITNESS MONUMENTS, references and accessories used to perpetuate the original or re-established location of this corner. Witnesses to corner location Bobby Sedgwick & Shane Austin & Brad Digman  
 SKETCH:



LEGEND

- ⊕ Number 8 x 30" rebar set with Grant County Aluminum cap
- Number 4 x 24" Rebar set with red plastic "TIE" cap
- x— Approximate existing fence

SKETCH NOT TO SCALE



**Austin**  
**Engineering LLC**

4211 HWY 81 E, LANCASTER, WI 53813  
 PHONE 608-723-6363 FAX 608-723-6702

JOB NUMBER 06s110  
 FIELDBOOK: TDSR, 2601  
 G:\T5NR2W\32  
 H:\TIE\T5NR2W\114

DRAWN BY: SW AUSTIN  
 APPROVED: LL AUSTIN