

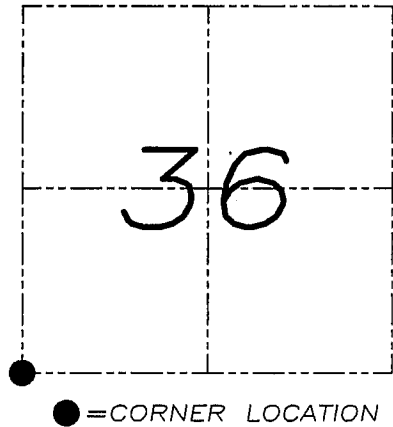
# U.S. PUBLIC LAND SURVEY MONUMENT RECORD

Section 36, Town 5 North Range 3 West, Town of North Lancaster, Grant County, Wisconsin

## CERTIFICATE

I, Larry L. Austin, do hereby certify that the corner location on this record was determined by me and/or under my direct supervision and that this U.S. public land survey monument record is correct and complete to the best of my knowledge and belief.

*Larry L. Austin*  
 Larry L. Austin, S-1903



## HISTORY OF CORNER

Corner was originally set in by Lyon. In 1973 Ralph tied to the corner with no mention of monument. No other record of the corner was found.

## CORNER EVIDENCE FOUND

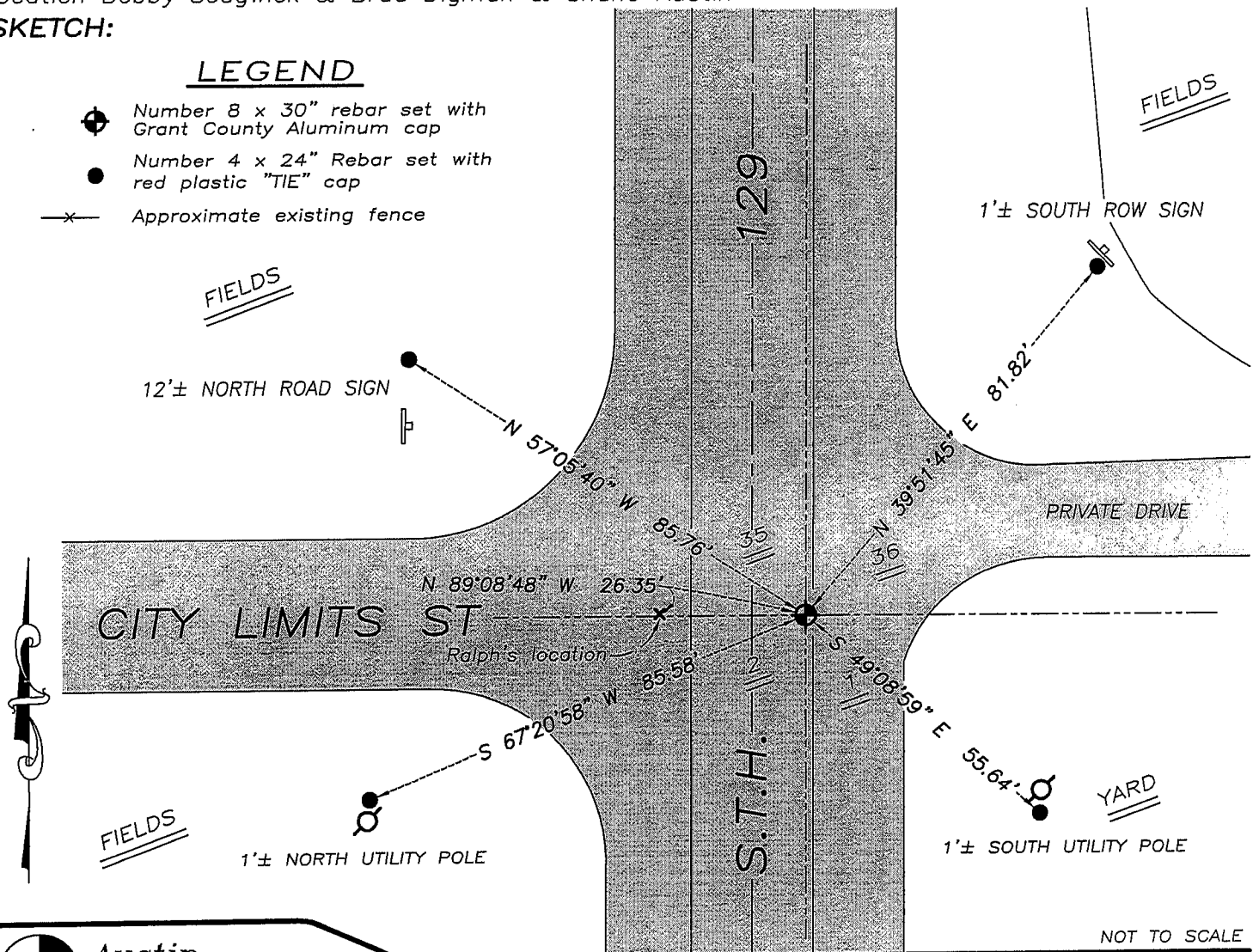
I was unable to locate evidence of the original corner. Ralph's location did not agree with all adjoining corners and highway plans in the area. I reset the corner based on double proportioning methods after verifying with an EDM & GPS traverse of the area.

DESCRIPTION OF CORNER AND WITNESS MONUMENTS, references and accessories used to perpetuate the original or re-established location of this corner. Witnesses to monument location Bobby Sedgwick & Brad Digman & Shane Austin

## SKETCH:

### LEGEND

- Number 8 x 30" rebar set with Grant County Aluminum cap
- Number 4 x 24" Rebar set with red plastic "TIE" cap
- Approximate existing fence



**Austin Engineering LLC**

4211 HWY 81 E, LANCASTER, WI 53813  
 PHONE 608-723-6363 FAX 608-723-6702

JOB NUMBER 07S215  
 FIELDBOOK: TDSR, 2700  
 G:\T5NR2W\32  
 H:\TIE\T5NR3W\123

DRAWN BY: SW AUSTIN  
 APPROVED: LL AUSTIN