

U.S. PUBLIC LAND SURVEY MONUMENT RECORD - GRANT COUNTY, WI

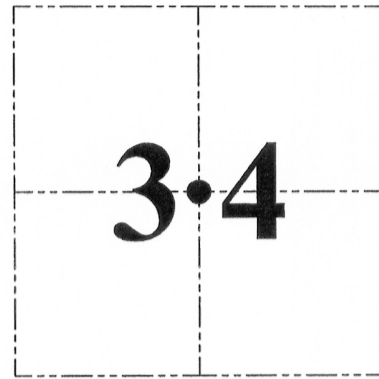
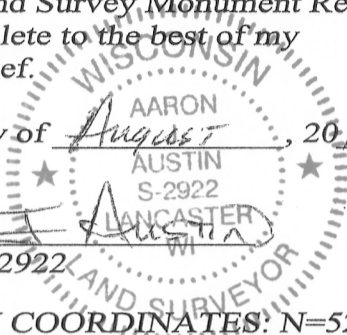
Section 34, Town 5 North Range 3 West, Town of North Lancaster

CERTIFICATE:

I, Aaron J. Austin, do hereby certify that the corner location on this record was determined by me and/or under my direct supervision and that this U.S. Public Land Survey Monument Record is correct and complete to the best of my knowledge and belief.

Dated this 15 day of August, 2013.

Aaron J. Austin
 Aaron J. Austin, S-2922



● = CORNER LOCATION

GRANT COUNTY COORDINATES: N=529756.39' E=817934.82'

HISTORY OF CORNER ESTABLISHMENT:

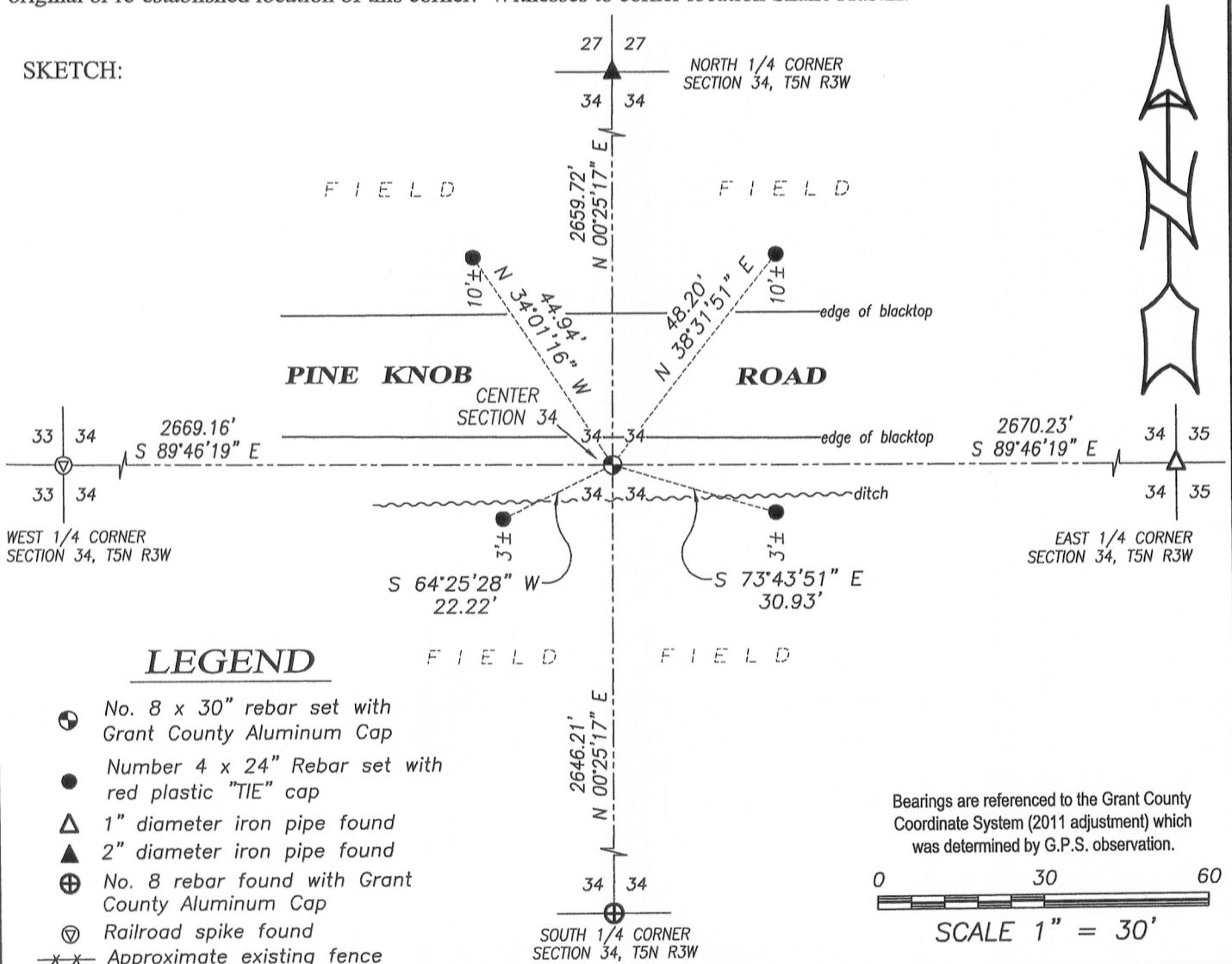
- Corner was not set with original survey.
- 1847-Struntz set corner and tied bearing trees on a survey. (Book B, Page 45).
- 1875-Barber found bearing trees on 1847 survey. (Book B, Page 545).
- 1892-Sampson found a Stone on a survey. (Book D, Page 214).
- 1906-Appleby shown the corner on a survey. (Book D, Page 312).
- 1959-Ralph Jr. shown the corner on a survey. (Book E, Page 166).
- 1997-L. Austin shown the center on a survey. (Book Z, Page 30).
- 1997- L. Austin shown the center on a survey. (Book Z, Page 31).

DESCRIPTION OF CORNER EVIDENCE FOUND:

No bearing trees or stone was recovered. I reset the corner at the intersection of the East-West 1/4 and the North-South 1/4 lines. Corner location was verified by E.D.M. and G.P.S methods.

DESCRIPTION OF CORNER AND WITNESS MONUMENTS, references and accessories used to perpetuate the original or re-established location of this corner. Witnesses to corner location Shane Austin.

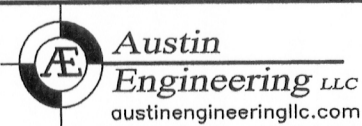
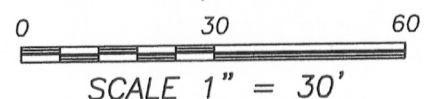
SKETCH:



LEGEND

- ⊙ No. 8 x 30" rebar set with Grant County Aluminum Cap
- Number 4 x 24" Rebar set with red plastic "TIE" cap
- ▲ 1" diameter iron pipe found
- ▲ 2" diameter iron pipe found
- ⊕ No. 8 rebar found with Grant County Aluminum Cap
- ⊖ Railroad spike found
- x-x- Approximate existing fence

Bearings are referenced to the Grant County Coordinate System (2011 adjustment) which was determined by G.P.S. observation.



4211 HWY 81 E, LANCASTER, WI 53813
 PHONE: 608-723-6363 FAX: 608-723-6702

JOB NO: 11S192-A
 G:\GRANTDOT\HWY61B
 H:\TIE\T5NR3W\117.5

FIELDBOOK: TDSR
 DRAWN BY: AJ AUSTIN
 CREW: SW AUSTIN

117.5

AUG 15 2013