

U.S. PUBLIC LAND SURVEY MONUMENT RECORD - GRANT COUNTY, WI

Section 34, Town 5 North Range 3 West, Town of North Lancaster

CERTIFICATE:

I, Aaron J. Austin, do hereby certify that the corner location on this record was determined by me and/or under my direct supervision and that this U.S. Public Land Survey Monument Record is correct and complete to the best of my knowledge and belief.

Dated this 15 day of August, 2023.

Aaron J. Austin
 Aaron J. Austin, S-2922



● = CORNER LOCATION

GRANT COUNTY COORDINATES: N=527110.25' E=817915.36'

HISTORY OF CORNER ESTABLISHMENT:

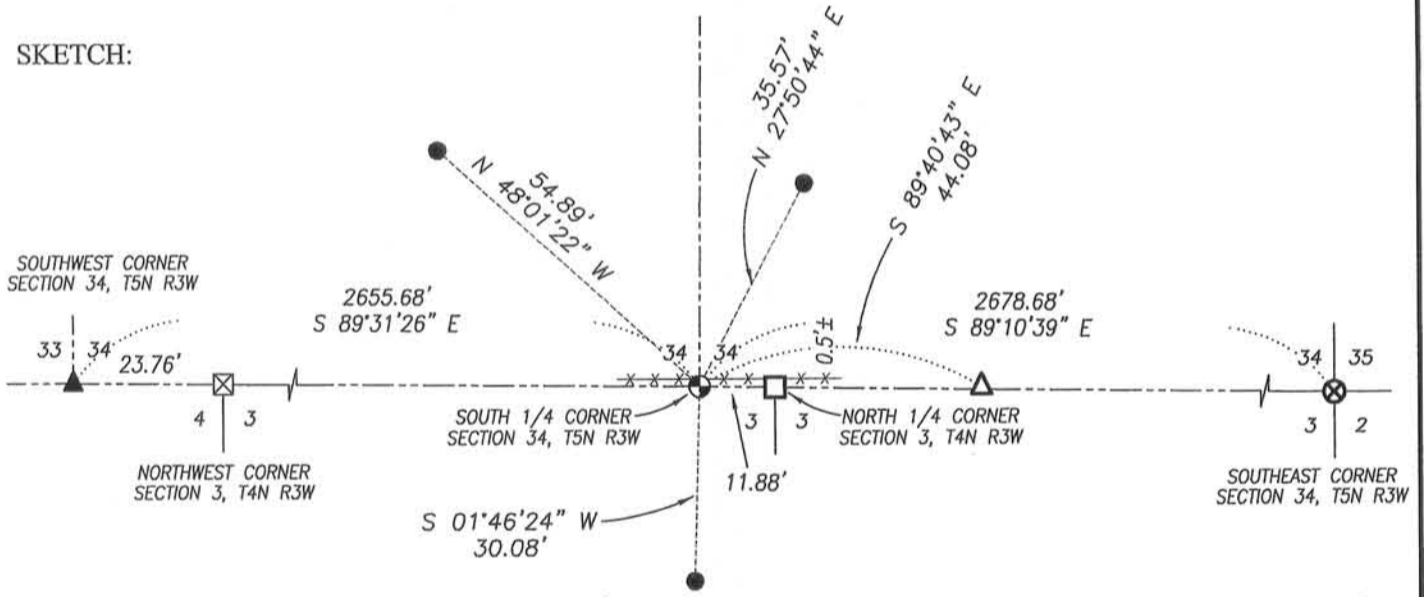
- 1832-Corner originally set by Lucius Lyon.
 - 1847-Struntz found original corner on a survey. (Book B, Page 45).
 - 1892-Sampson found remains of one stump on a survey. (Book D, Page 214).
 - 1906-Appleby shown the corner on a survey. (Book D, Page 312).
 - (Undated)-Homer Ralph Jr. shown this corner on a survey. (Book E, Page 146).
 - 1982-Douglas Malliet prepared a U.S. Public Land Survey Monument Record for this corner.
- Several other more recent surveys show this corner.

DESCRIPTION OF CORNER EVIDENCE FOUND:

Several recent surveys show different monuments and different locations for this corner. I did not accept the location of the No. 3 rebar set by Malliet. I reset the corner on the South line of Section 34 at the recorded half offset from a No. 10 rebar marking the North 1/4 corner of Section 3, T4N R3W. Corner location was verified by E.D.M. and G.P.S methods.

DESCRIPTION OF CORNER AND WITNESS MONUMENTS, references and accessories used to perpetuate the original or re-established location of this corner. Witnesses to corner location Shane Austin.

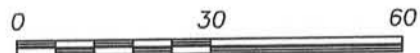
SKETCH:



LEGEND

- No. 8 x 30" rebar set with Grant County Aluminum Cap
- Number 4 x 24" Rebar set with red plastic "TIE" cap
- ⊠ Stone monument found
- ▲ 1" diameter iron pipe found
- ▲ 2" diameter iron pipe found
- ⊗ No. 6 rebar found with Grant County Aluminum Cap
- No. 10 rebar found
- x-x- Approximate existing fence

Bearings are referenced to the Grant County Coordinate System (2011 adjustment) which was determined by G.P.S. observation.



SCALE 1" = 30'



4211 HWY 81 E, LANCASTER, WI 53813
 PHONE: 608-723-6363 FAX: 608-723-6702

JOB NO: 11S192-A
 G:\GRANTDOT\HWY61B
 H:\TIE\T5NR3W\126

FIELDBOOK: TDSR
 DRAWN BY: AJ AUSTIN
 CREW: SW AUSTIN

U.S. PUBLIC LAND SURVEY MONUMENT RECORD - GRANT COUNTY, WI

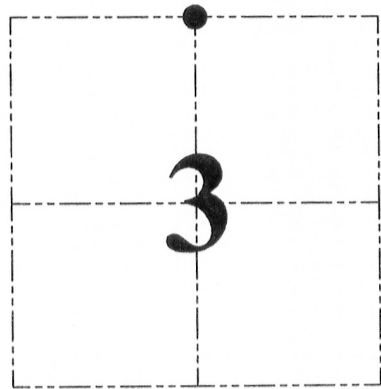
Section 3, Town 4 North Range 3 West, Town of South Lancaster

CERTIFICATE:

I, Aaron J. Austin, do hereby certify that the corner location on this record was determined by me and/or under my direct supervision and that this U.S. Public Land Survey Monument Record is correct and complete to the best of my knowledge and belief.

Dated this 15 day of August, 2013.

Aaron J. Austin
Aaron J. Austin, S-2922 WI
LAND SURVEYOR



● = CORNER LOCATION

GRANT COUNTY COORDINATES: N=527110.08' E=817927.23'

HISTORY OF CORNER ESTABLISHMENT:

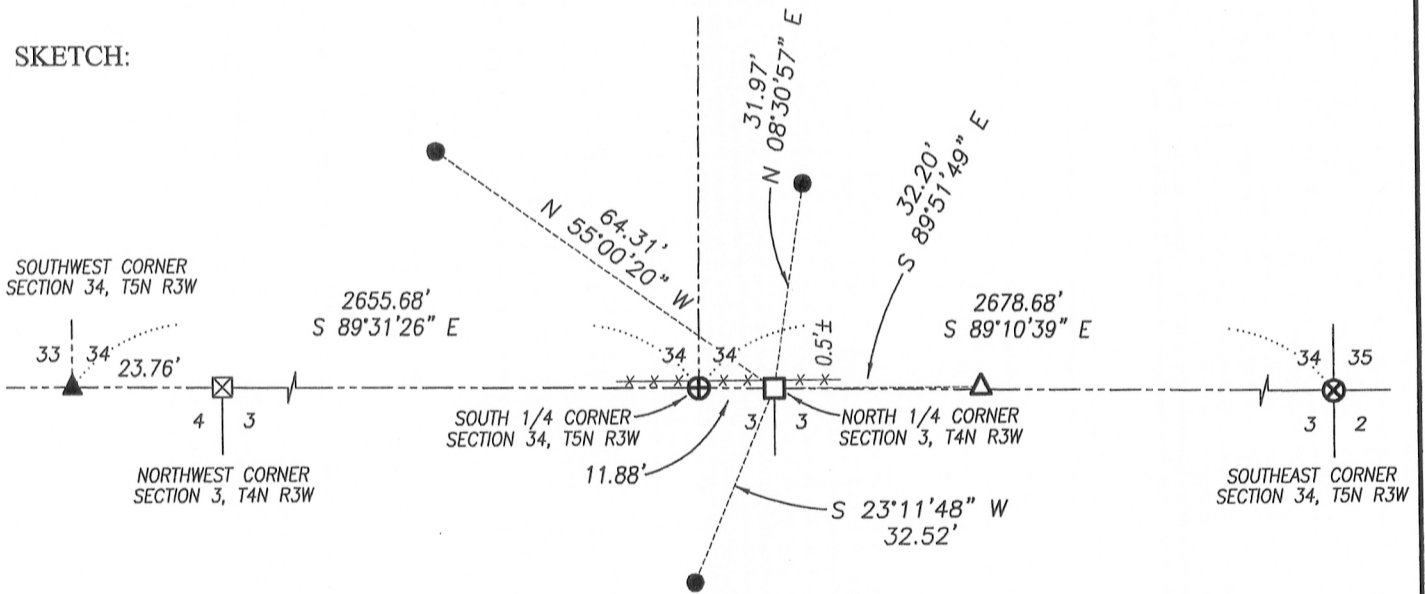
Corner was not set with original survey.
1840-Freeman surveyed in the North 1/2 of Section 3. (Book A, Page 45).
1963- Homer Ralph Jr. shown this corner on a survey. (Book E, Page 146).
1972-Homer Ralph Jr. shown the corner on a survey. (Book F, Page 157).
1975-Homer Ralph Jr. shown the corner location on a survey. (Book G, Page 142).
Several other more recent surveys also show this corner.

DESCRIPTION OF CORNER EVIDENCE FOUND:

Several recent surveys show a No. 10 rebar at this corner location. I found and accepted a No. 10 rebar which also coincides with area monuments found on a Homer Ralph Jr. Survey filed in Book G, Page 142. Corner location was verified by E.D.M. and G.P.S methods.

DESCRIPTION OF CORNER AND WITNESS MONUMENTS, references and accessories used to perpetuate the original or re-established location of this corner. Witnesses to corner location Shane Austin.

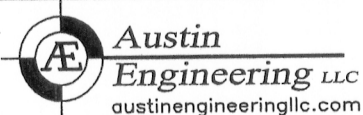
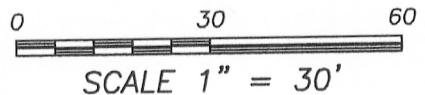
SKETCH:



LEGEND

- No. 10 rebar found
- Number 4 x 24" Rebar set with red plastic "TIE" cap
- ⊠ Stone monument found
- ⊕ No. 8 rebar found with Grant County Aluminum Cap
- △ 1" diameter iron pipe found
- ▲ 2" diameter iron pipe found
- ⊗ No. 6 rebar found with Grant County Aluminum Cap
- x-x- Approximate existing fence

Bearings are referenced to the Grant County Coordinate System (2011 adjustment) which was determined by G.P.S. observation.



4211 HWY 81 E, LANCASTER, WI 53813
PHONE: 608-723-6363 FAX: 608-723-6702

JOB NO: 11S192-A
G:\GRANTDOT\HWY61B
H:\TIE\T4NR3W\06

FIELDBOOK: TDSR
DRAWN BY: AJ AUSTIN
CREW: SW AUSTIN

North Lancaster Township

US. PUBLIC LAND SURVEY MONUMENT RECORD

CORNER DESCRIPTION: SW CORNER, SECTION 34, T 5 N, R 3 W

STATE PLANE COORDINATES: N _____, E _____

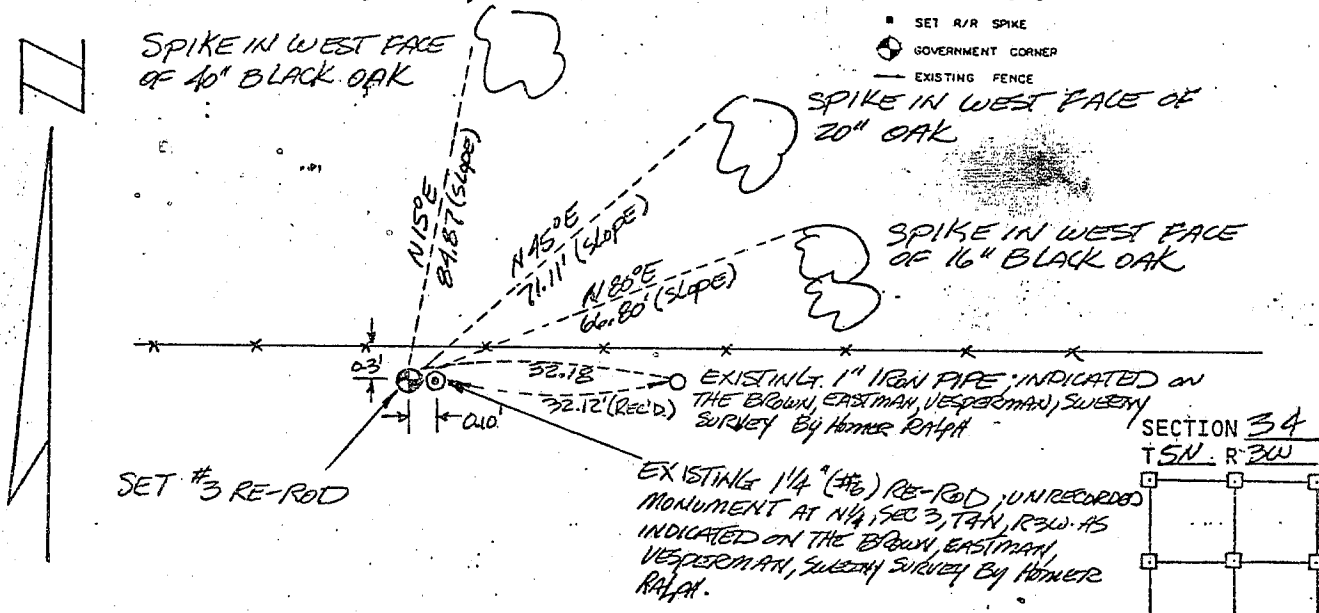
THETA ANGLE: _____

HORIZONTAL DATUM: WISCONSIN STATE PLANE COORDINATE SYSTEM, SOUTH ZONE

EVIDENCE: No corner monument or record, used established line in the Brown, Eastman, Vesperman, Sweeney survey and placed at proportional distance.

MONUMENT: FOUND , PLACED
METHOD OF RESTORATION (RE-ESTABLISHMENT):
 ACCEPTED EXISTING MONUMENT
N , E ACCEPTED OCCUPATION
N , E LOST CORNER PROPORTIONATE METHODS
DATE CORNER SET: 5-3-83; DJM, DW

- LEGEND
- ▲ SET #6 REBAR, 1.13 LBS PER LINEAL FT. MIN. WT.
 - SET 1" X 24" IRON PIPE, 1.13 LBS. PER LINEAL FT. MIN. WT.
 - SET 2" X 30" IRON PIPE, 3.65 LBS. PER LINEAL FT. MIN. WT.
 - FOUND 1" IRON PIPE
 - FOUND .2" IRON PIPE
 - FOUND R/R SPIKE
 - SET R/R SPIKE
 - GOVERNMENT CORNER
 - EXISTING FENCE



NOT TO SCALE THIS CONFORMS TO WISCONSIN ADMINISTRATIVE CODE A-E 5.02

SURVEYOR'S AFFIDAVIT:

STATE OF WISCONSIN) COUNTY) SS
GRANT

I hereby certify that I, Douglas J. Malliet, have complied with the Wisconsin State Statutes, Statutes of the United States, and the rules and regulations made by the Secretary of the Interior in the location of the corner shown above.

DATE OF SURVEY: 7-30-82

Douglas J. Malliet
REGISTERED LAND SURVEYOR
1260



D. F. BURBACH MUNICIPAL & CIVIL ENGINEERS

410 NORTH SECOND STREET • PLATTEVILLE, WISCONSIN 53818 • (608) 348-3262

MAY 24 1983

patch