

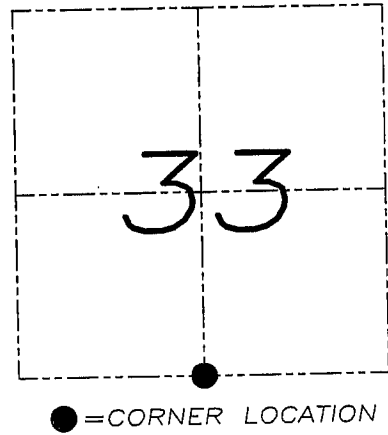
U.S. PUBLIC LAND SURVEY MONUMENT RECORD

Section 33, Town 5 North Range 3 West, Town of North Lancaster, Grant County, Wisconsin

CERTIFICATE

I, Larry L. Austin, do hereby certify that the corner location on this record was determined by me and/or under my direct supervision and that this U.S. public land survey monument record is correct and complete to the best of my knowledge and belief.

Larry L. Austin
 Larry L. Austin, S-1903 LANCASTER WI date 7-10-08



HISTORY OF CORNER

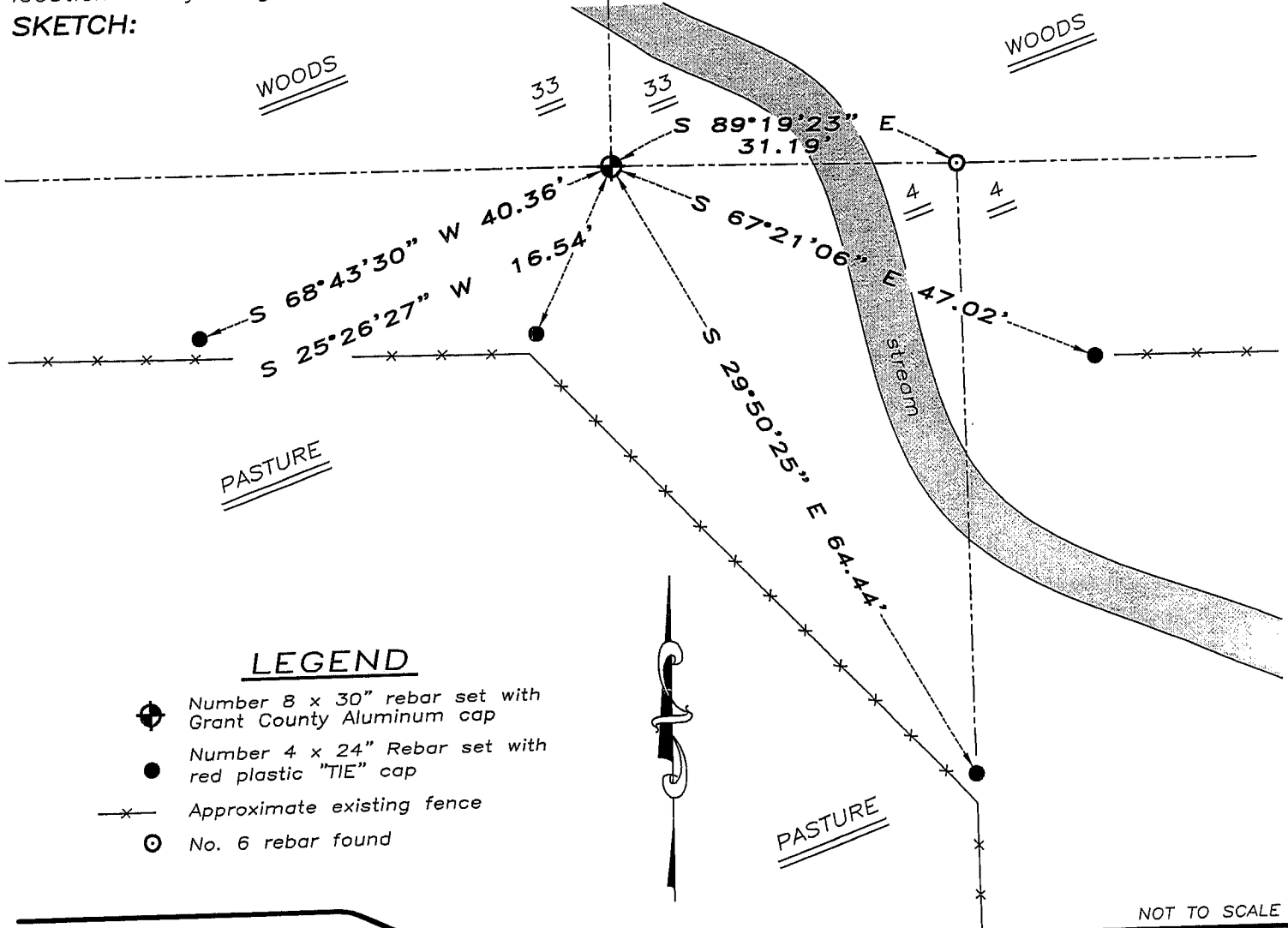
Corner was originally set by Lyon. No other record of the corner was found.

CORNER EVIDENCE FOUND

I reset the corner at the proportioned offset from the existing North 1/4 corner of Section 4, T4N R3W. Verified this location using EDM & GPS methods.

DESCRIPTION OF CORNER AND WITNESS MONUMENTS, references and accessories used to perpetuate the original or re-established location of this corner. Witnesses to monument location Bobby Sedgwick & Brad Digman & Shelby Blindert.

SKETCH:



Austin Engineering LLC

4211 HWY 81 E, LANCASTER, WI 53813
 PHONE 608-723-6363 FAX 608-723-6702

JOB NUMBER 07S237(2)
 FIELDBOOK: TDSR, 2710
 G:\T5NR3W\27
 H:\TIE\T5NR3W\128

DRAWN BY: SW AUSTIN
 APPROVED: LL AUSTIN

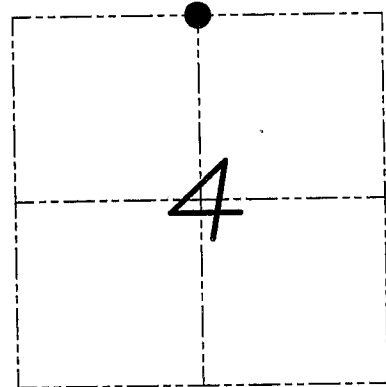
U.S. PUBLIC LAND SURVEY MONUMENT RECORD

Section 4, Town 4 North Range 3 West, Town of South Lancaster, Grant County, Wisconsin

CERTIFICATE

I, Larry L. Austin, do hereby certify that the corner location on this record was determined by me and/or under my direct supervision and that this U.S. public land survey monument record is correct and complete to the best of my knowledge and belief.

Larry L. Austin
 Larry L. Austin, LAND SURVEYOR
 LANSASTER, WI
 1-10-08
 date



● = CORNER LOCATION

HISTORY OF CORNER

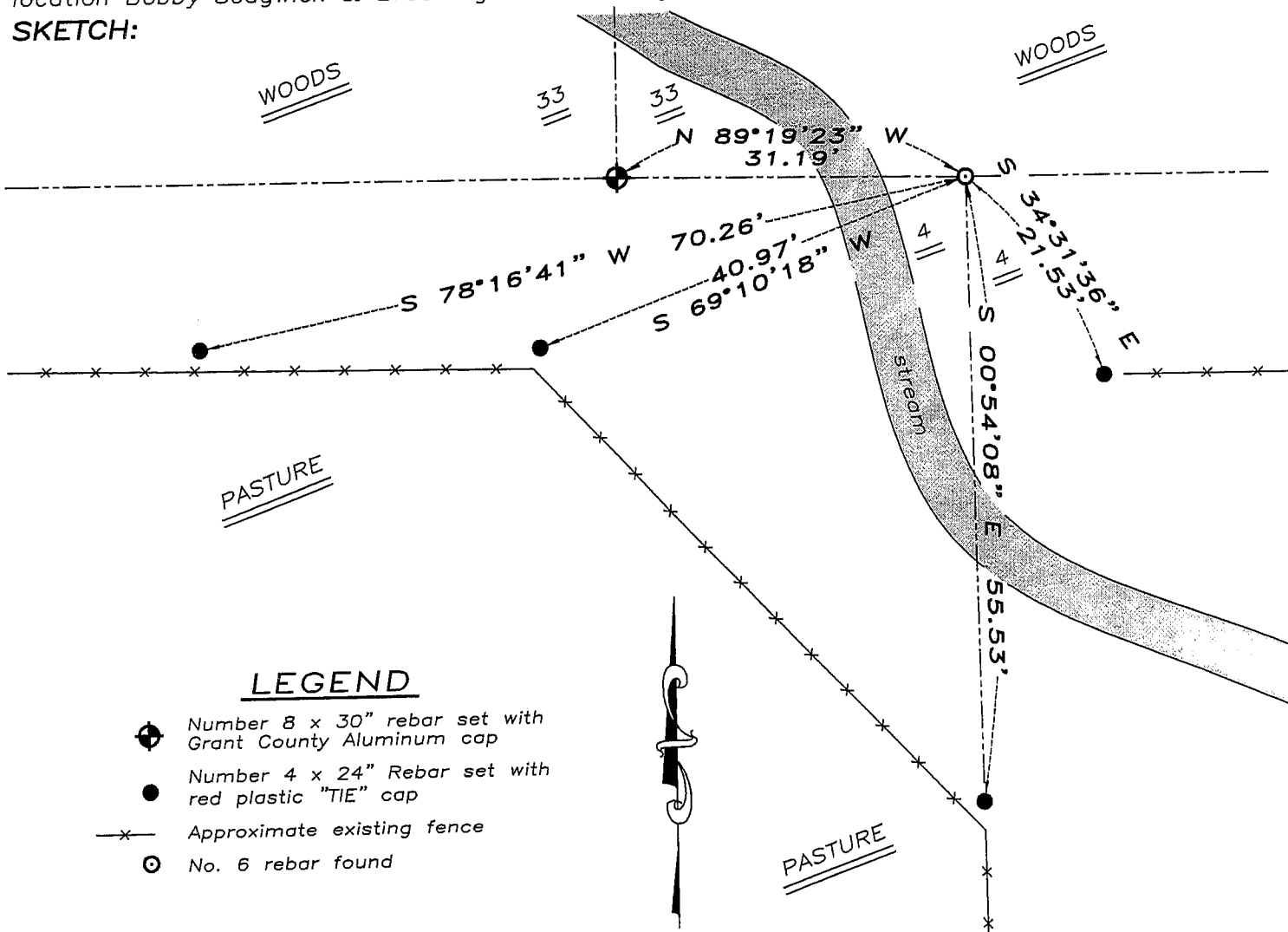
Corner was never originally set. Many various surveys have tied to the corner during the past few years.

CORNER EVIDENCE FOUND

I found the existing No. 6 rebar of record from various surveys. I accepted it's location after an EDM & GPS traverse of the area.

DESCRIPTION OF CORNER AND WITNESS MONUMENTS, references and accessories used to perpetuate the original or re-established location of this corner. Witnesses to monument location Bobby Sedgwick & Brad Digman & Shelby Blindert.

SKETCH:



NOT TO SCALE



Austin Engineering LLC

4211 HWY 81 E, LANCASTER, WI 53813
 PHONE 608-723-6363 FAX 608-723-6702

JOB NUMBER 07S237(2)
 FIELDBOOK: TDSR, 2710
 G:\T5NR3W\27
 H:\TIE\T4NR3W\08

DRAWN BY: SW AUSTIN
 APPROVED: LL AUSTIN

08