

# U.S. PUBLIC LAND SURVEY MONUMENT RECORD - GRANT COUNTY, WI

Section 5, Town 4 North Range 3 West, Town of South Lancaster

**CERTIFICATE:**

I, Aaron J. Austin, do hereby certify that the corner location on this record was determined by me and/or under my direct supervision and that this U.S. Public Land Survey Monument Record is correct and complete to the best of my knowledge and belief.

Dated this 23rd day of December, 2013.

*Aaron J. Austin*  
 Aaron J. Austin, S-2922



HISTORY OF CORNER ESTABLISHMENT:

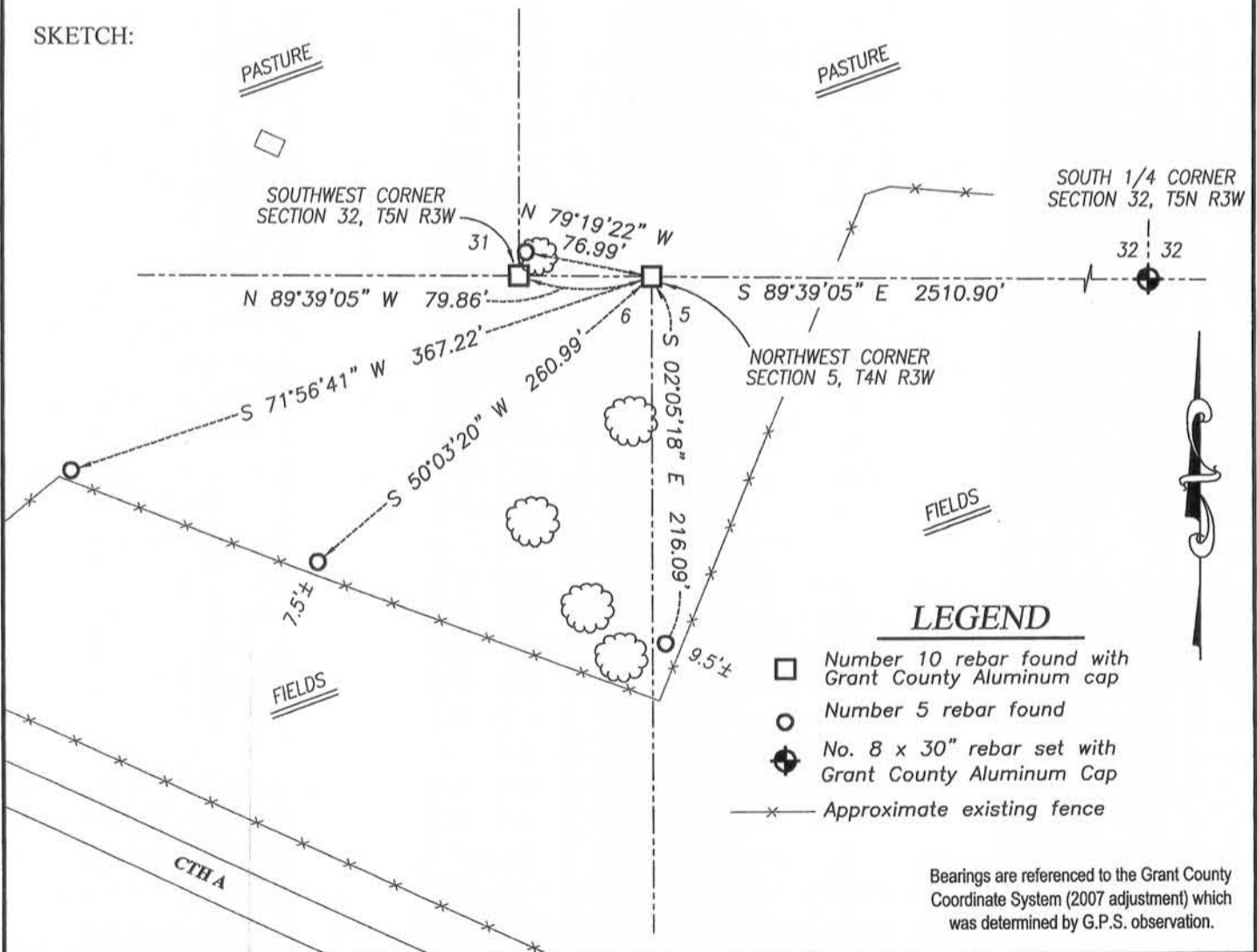
Corner originally set in 1833 by Robert Clark.  
 Larry Austin tied to the corner on a survey dated 8-7-1987.  
 Larry Austin tied to the corner on a survey dated 5-20-2008.  
 Travis Kramer shown this corner on a Certified Land Corner for the Southeast corner of Section 31, T5N R3W dated 10-17-2005.

DESCRIPTION OF CORNER EVIDENCE FOUND:

I found and accepted a No. 10 rebar with an Aluminum Cap.  
 I verified this location by E.D.M. and G.P.S. methods.

DESCRIPTION OF CORNER AND WITNESS MONUMENTS, references and accessories used to perpetuate the original or re-established location of this corner. Witnesses to corner location Shane Austin

**SKETCH:**



**Austin Engineering LLC**  
 austinengineeringllc.com  
 4211 HWY 81 E, LANCASTER, WI 53813  
 PHONE: 608-723-6363 FAX: 608-723-6702

JOB NO: 13S165  
 G:\13S165  
 H:\TIE\T4NR3W\11

FIELDBOOK: TDSR  
 DRAWN BY: SW AUSTIN  
 CREW: SW AUSTIN

1"=100'

# U.S. PUBLIC LAND SURVEY MONUMENT RECORD - GRANT COUNTY, WI

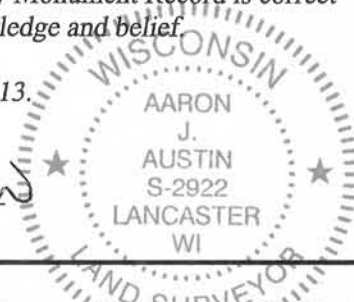
Section 5, Town 4 North Range 3 West, Town of South Lancaster

**CERTIFICATE:**

I, Aaron J. Austin, do hereby certify that the corner location on this record was determined by me and/or under my direct supervision and that this U.S. Public Land Survey Monument Record is correct and complete to the best of my knowledge and belief.

Dated this 26th day of December, 2013.

*Aaron J. Austin*  
 Aaron J. Austin, S-2922



● = CORNER LOCATION

**HISTORY OF CORNER ESTABLISHMENT:**

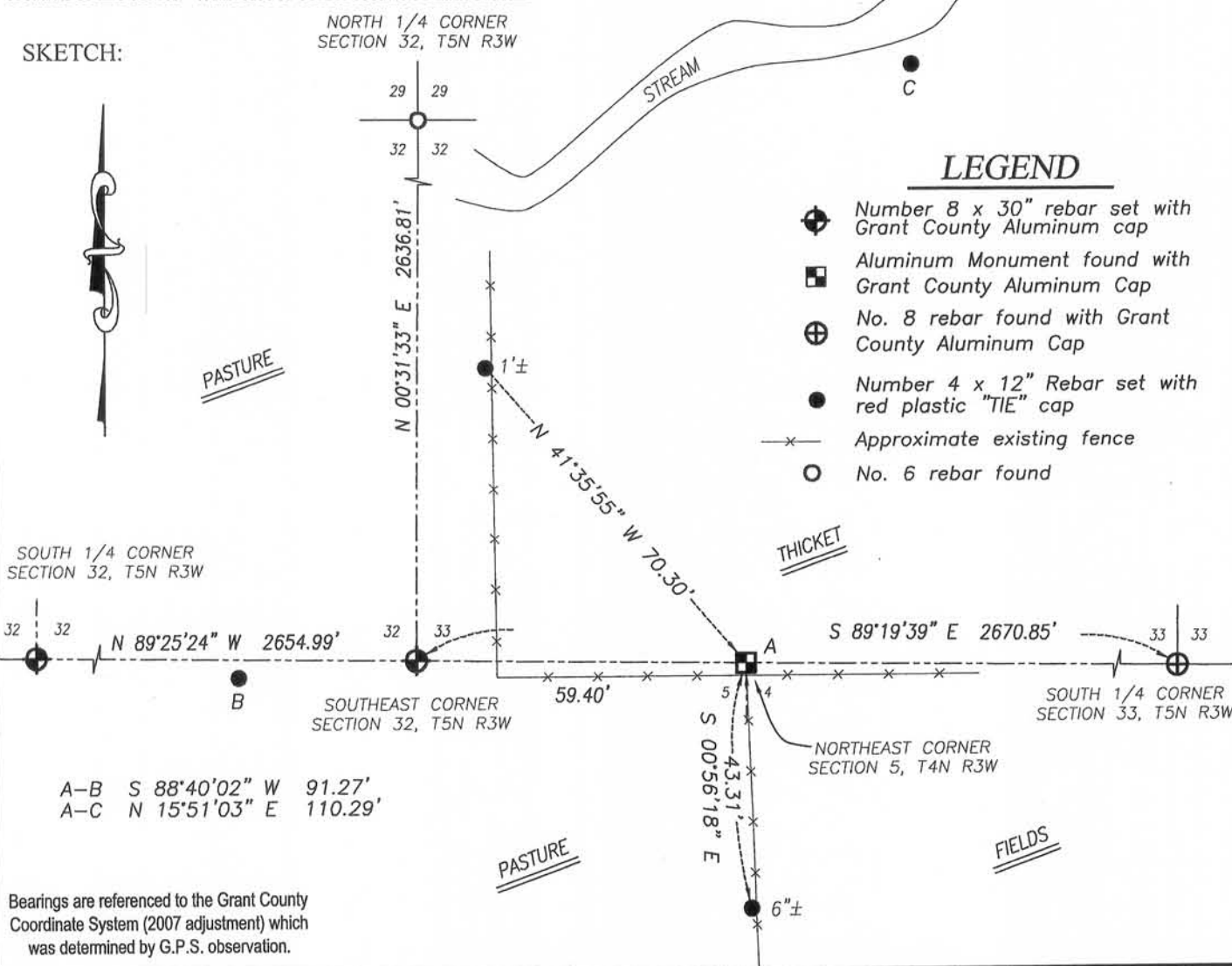
- Corner originally set in 1833 by Robert Clark.
- 1844-Samuel Wilste shown corner on a survey, Book A, Page 236.
- 1876-Joel Barber shown corner on a survey in Book D, Page 2.
- 1976-David Krohn shown corner on a survey in Book G, Page 159.
- 1977-David Krohn shown corner on a survey in Book G, Page 160.
- 1977-David Krohn shown corner on a survey in Book G, Page 161.
- 1987-Larry Austin shown corner on a survey in Book K, Page 180.
- 1987-Larry Austin shown corner on a survey in Book K, Page 181.
- 1997-Michael LaRosa shown corner on a survey in Book Z, Page 12.
- 1997-Michael LaRosa shown corner on survey in Book Z, Page 54.
- 2000-Bruce Bowden shown corner on a survey in Book 7, Page 31.
- 2012-Jimmy Rose shown corner on a survey in Book 32, Page 47.
- 2012-Jimmy Rose shown corner on a survey filed in Book 32, Page 64.

**DESCRIPTION OF CORNER EVIDENCE FOUND:**

I found and accepted an Aluminum Monument shown on several surveys mentioned above. I verified this location with E.D.M. and G.P.S. methods.

**DESCRIPTION OF CORNER AND WITNESS MONUMENTS, references and accessories used to perpetuate the original or re-established location of this corner. Witnesses to corner location Shane Austin**

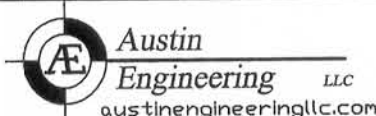
**SKETCH:**



**LEGEND**

- ⊕ Number 8 x 30" rebar set with Grant County Aluminum cap
- ⊠ Aluminum Monument found with Grant County Aluminum Cap
- ⊕ No. 8 rebar found with Grant County Aluminum Cap
- Number 4 x 12" Rebar set with red plastic "TIE" cap
- x- Approximate existing fence
- No. 6 rebar found

Bearings are referenced to the Grant County Coordinate System (2007 adjustment) which was determined by G.P.S. observation.



4211 HWY 81 E, LANCASTER, WI 53813  
 PHONE: 608-723-6363 FAX: 608-723-6702

JOB NO: 13S165  
 G:\13S165  
 H:\TIE\T4NR3W\09

FIELDBOOK: TDSR  
 DRAWN BY: SW AUSTIN  
 CREW: SW AUSTIN