

U.S. PUBLIC LAND SURVEY MONUMENT RECORD - GRANT COUNTY, WI

Section 32, Town 5 North Range 3 West, Town of North Lancaster

CERTIFICATE:

I, Aaron J. Austin, do hereby certify that the corner location on this record was determined by me and/or under my direct supervision and that this U.S. Public Land Survey Monument Record is correct and complete to the best of my knowledge and belief.

Dated this 26th day of December, 2013.

Aaron J. Austin
 Aaron J. Austin, S-2922



● = CORNER LOCATION

HISTORY OF CORNER ESTABLISHMENT:

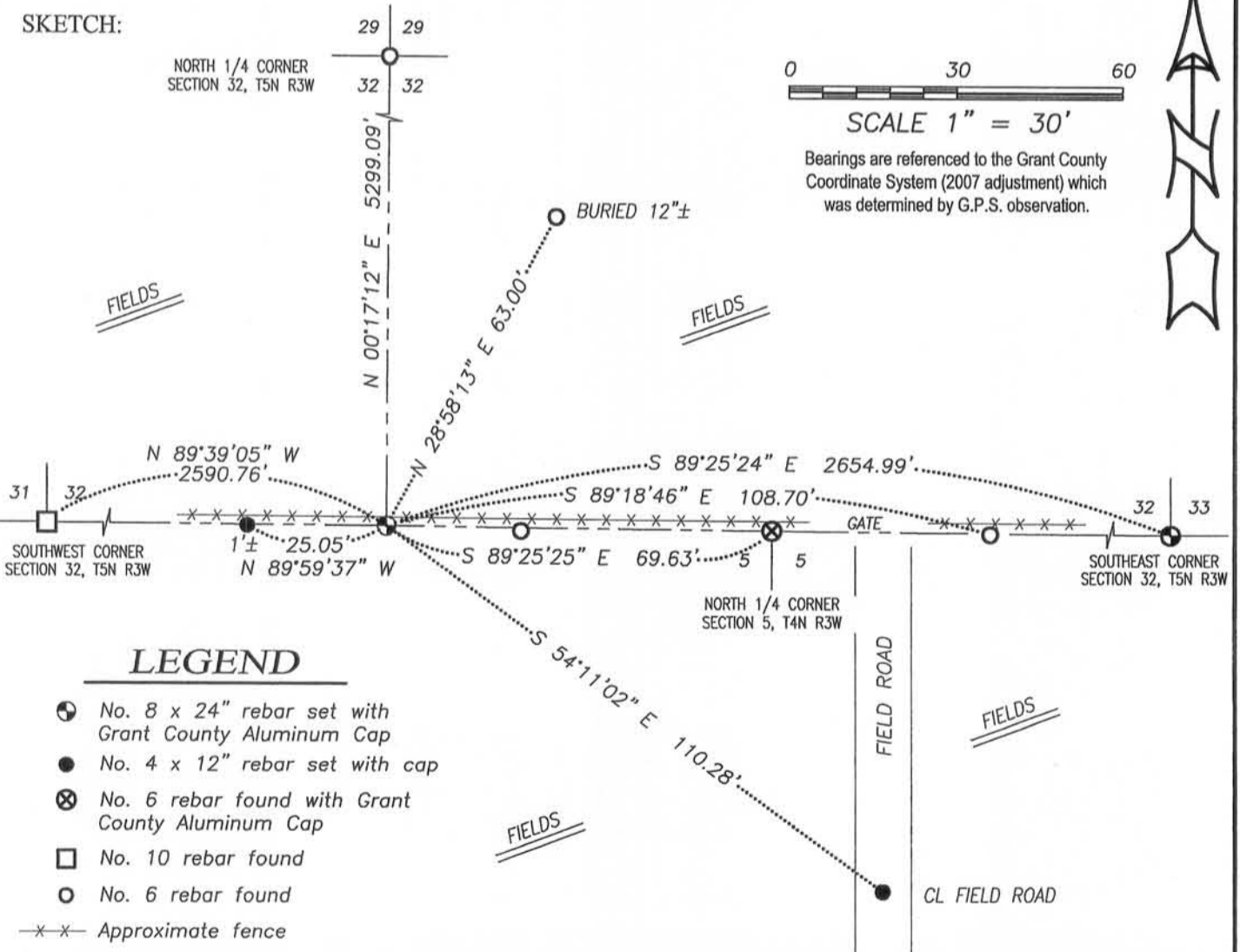
Corner originally set in 1832 by Lucius Lyon.
 1849-George Stuntz shown this corner on a survey, Book B, Page 179.
 No other record found for this corner.

DESCRIPTION OF CORNER EVIDENCE FOUND:

I reset this corner at the prorated offset, on a projection of a line from the Southeast corner of Section 32 through the North 1/4 corner of Section 5, T4N R3W. I verified this location with E.D.M. and G.P.S. methods.

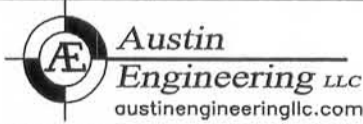
DESCRIPTION OF CORNER AND WITNESS MONUMENTS, references and accessories used to perpetuate the original or re-established location of this corner. Witnesses to corner location Shane Austin.

SKETCH:



LEGEND

- No. 8 x 24" rebar set with Grant County Aluminum Cap
- No. 4 x 12" rebar set with cap
- ⊗ No. 6 rebar found with Grant County Aluminum Cap
- No. 10 rebar found
- No. 6 rebar found
- x-x- Approximate fence



4211 HWY 81 E, LANCASTER, WI 53813
 PHONE: 608-723-6363 FAX: 608-723-6702

JOB NO: 13s165
 G:\13s165
 H:\TIE\T5NR3W\130

DRAWN BY: SW AUSTIN
 CREW: SW AUSTIN
 APPROVED: AJ AUSTIN