

U.S. PUBLIC LAND SURVEY MONUMENT RECORD - GRANT COUNTY, WI

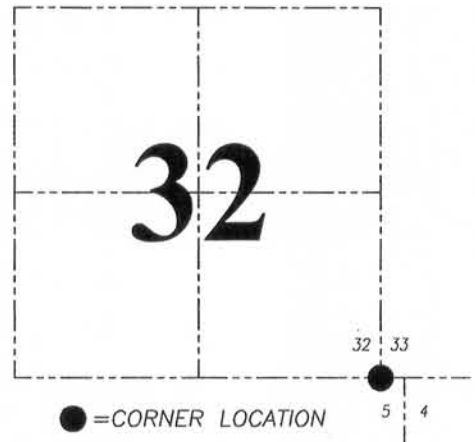
Section 32, Town 5 North Range 3 West, Town of North Lancaster

CERTIFICATE:

I, Aaron J. Austin, do hereby certify that the corner location on this record was determined by me and/or under my direct supervision and that this U.S. Public Land Survey Monument Record is correct and complete to the best of my knowledge and belief.

Dated this 26th day of December, 2013.

Aaron J. Austin
 Aaron J. Austin, S-2922



HISTORY OF CORNER ESTABLISHMENT:

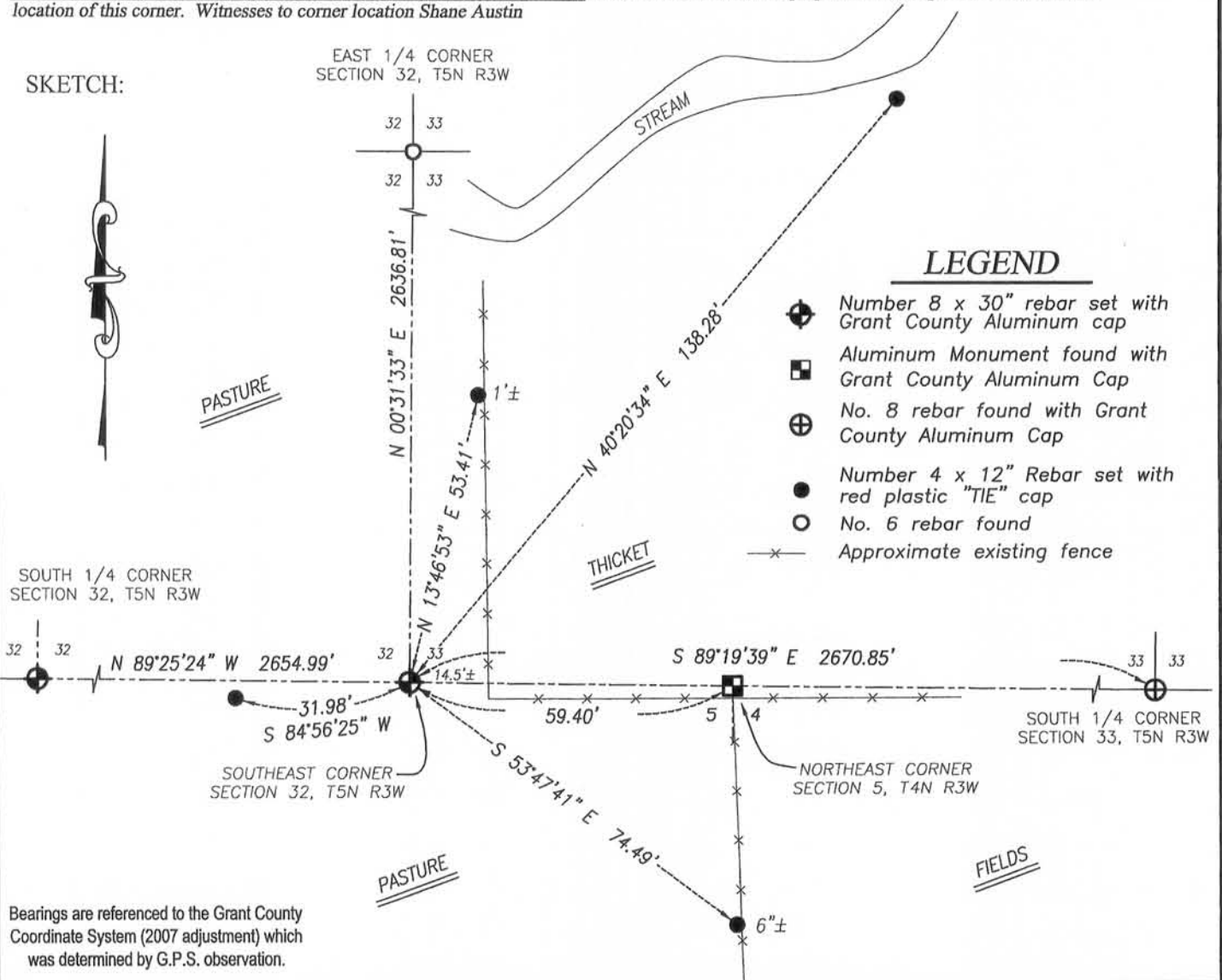
Corner originally set in 1832 by Lucius Lyon.
 No other record found for this corner.

DESCRIPTION OF CORNER EVIDENCE FOUND:

I reset the corner on a projection of the South line of Section 33 between a No. 8 rebar with a Grant County Aluminum Cap marking the South 1/4 corner of Section 33 and a Grant County Aluminum Monument marking the Northeast corner of Section 5, T4N, R3W, at the recorded offset of 90 Links.

DESCRIPTION OF CORNER AND WITNESS MONUMENTS, references and accessories used to perpetuate the original or re-established location of this corner. Witnesses to corner location Shane Austin

SKETCH:



Austin Engineering LLC
 austinengineeringllc.com
 4211 HWY 81 E, LANCASTER, WI 53813
 PHONE: 608-723-6363 FAX: 608-723-6702

JOB NO: 13S165
 G:\13S165
 H:\TIE\T5NR3W\129

DRAWN BY: SW AUSTIN
 CREW: SW AUSTIN
 APPROVED: AJ AUSTIN