

CERTIFIED LAND CORNER

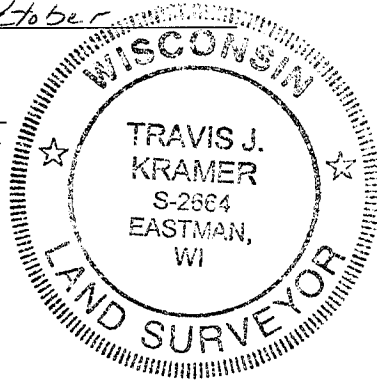
STATE OF WISCONSIN )  
 COUNTY OF GRANT ) S.S.

CERTIFICATE

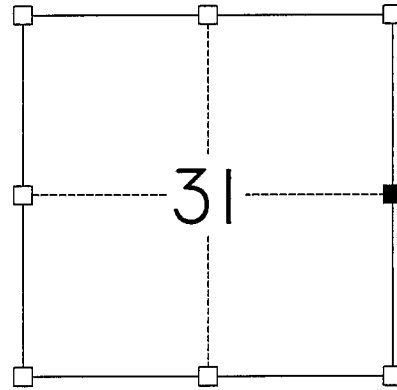
I, Travis J. Kramer, do hereby certify that  
 on the 17<sup>th</sup> day of October, 2005  
 I found (evidence)(~~no evidence~~) of the East Quarter  
Corner of Section 31, T. 5 N., R. 3 W.  
 of the Fourth Principal Meridian, and I re-established  
 said corner according to the Wisconsin Statutes as  
 shown and described hereon.

Dated this 17<sup>th</sup> day of October

[Signature]  
 Registered Land Surveyor S-2664



Seal



■ = CORNER LOCATION  
 T 5 N R 3 W  
 Town of North Lancaster

History of original corner establishment:

ORIGINAL GOVERNMENT SURVEY (INTERIOR) BY HARVEY PARKE IN THE FOURTH QUARTER OF 1832. CHARLES SAMPSON SET A TRIANGULAR STONE AT THE CORNER DURING A SURVEY FILED IN BOOK D, PAGE 239 IN THE GRANT COUNTY PROPERTY LISTERS OFFICE. HARVEY JOHNSON RESET THIS CORNER IN SEPTEMBER 2004.

Description of corner evidence found:

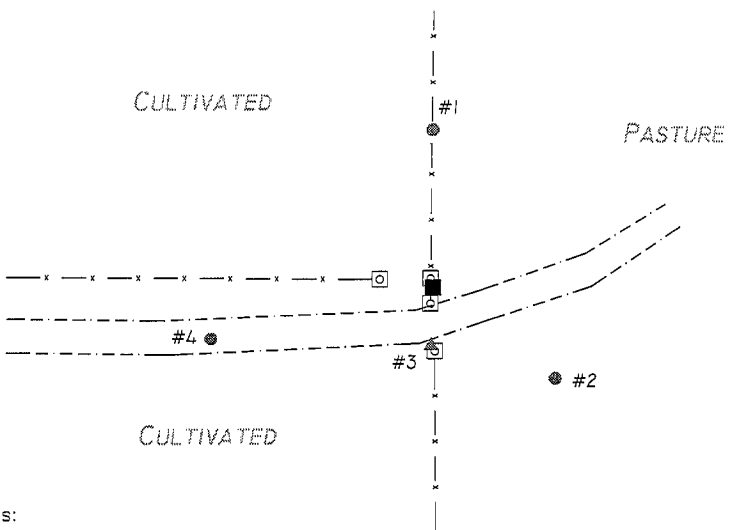
CORNER WAS A RECOVERED STONE MATCHING SAMPSON'S DESCRIPTION. STONE WAS RECOVERED FLUSH WITH THE GROUND AT A LONG STANDING FENCE INTERSECTION AND IS IN AGREEMENT WITH A ROADWAY EASEMENT RECORDED IN VOLUME 143, PAGE 78 OF THE GRANT COUNTY DEED REGISTER, DATED 6 FEBRUARY, 1901.

Description of corner and witness monuments, references and accessories used to perpetuate the original or re-established location of this corner:

Witnesses to corner location:

Travis J. Kramer  
Jay P. Adams

Sketch:



- TRIANGULAR STONE FOUND AT CORNER LOCATION  
1 1/4" IRON ROD SET BESIDE STONE
- ▲ 1 1/4" IRON ROD RECOVERED IRON SET BY HARVEY JOHNSON
- 5/8" IRON ROD SET AS ACCESSORY

Accessory Ties:

- |                    |                        |
|--------------------|------------------------|
| 1. 5/8" IRON ROD   | N. 00°03'15" E. 48.92' |
| 2. 5/8" IRON ROD   | S. 52°58'22" E. 47.52' |
| 3. 1 1/4" IRON ROD | S. 01°36'05" W. 18.00' |
| 4. 5/8" IRON ROD   | S. 76°57'04" W. 70.33' |

BEARINGS ARE REFERENCED TO THE WISCONSIN COUNTY COORDINATE SYSTEM (WCCS), GRANT COUNTY, NAD 83 (1991) ADJUSTMENT.

SURVEY CONTROL ORDER

Horizontal	3rd
Vertical	-

GRANT COUNTY COORDINATE SYSTEM

Corner	North (Y)	East (X)	Elevation (Z)	Zone
Control Sta. Name	529897.890	804666.630	-	

**FOR GRANT COUNTY, WISCONSIN**

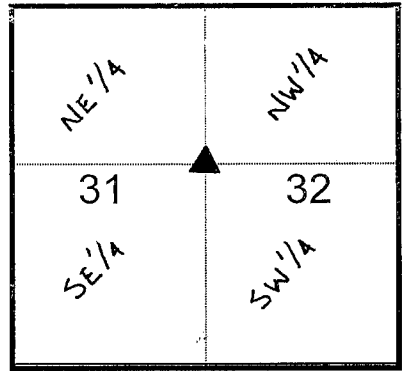
Note: This form is intended and designed to fulfill all requirements of Wisconsin Administrative Code, Chapter AE-7.08, U.S. Public Land Survey Monument Record (3)(a)(b)(c)(d)(e)(f)(g)(h)(i). Use additional sheets if necessary.

(a) The ~~Section~~, \* One Quarter corner common to Sections 31 and 32

Township(s) 5 North, Range(s) 03 West.

State Plane Coordinates: N \_\_\_\_\_

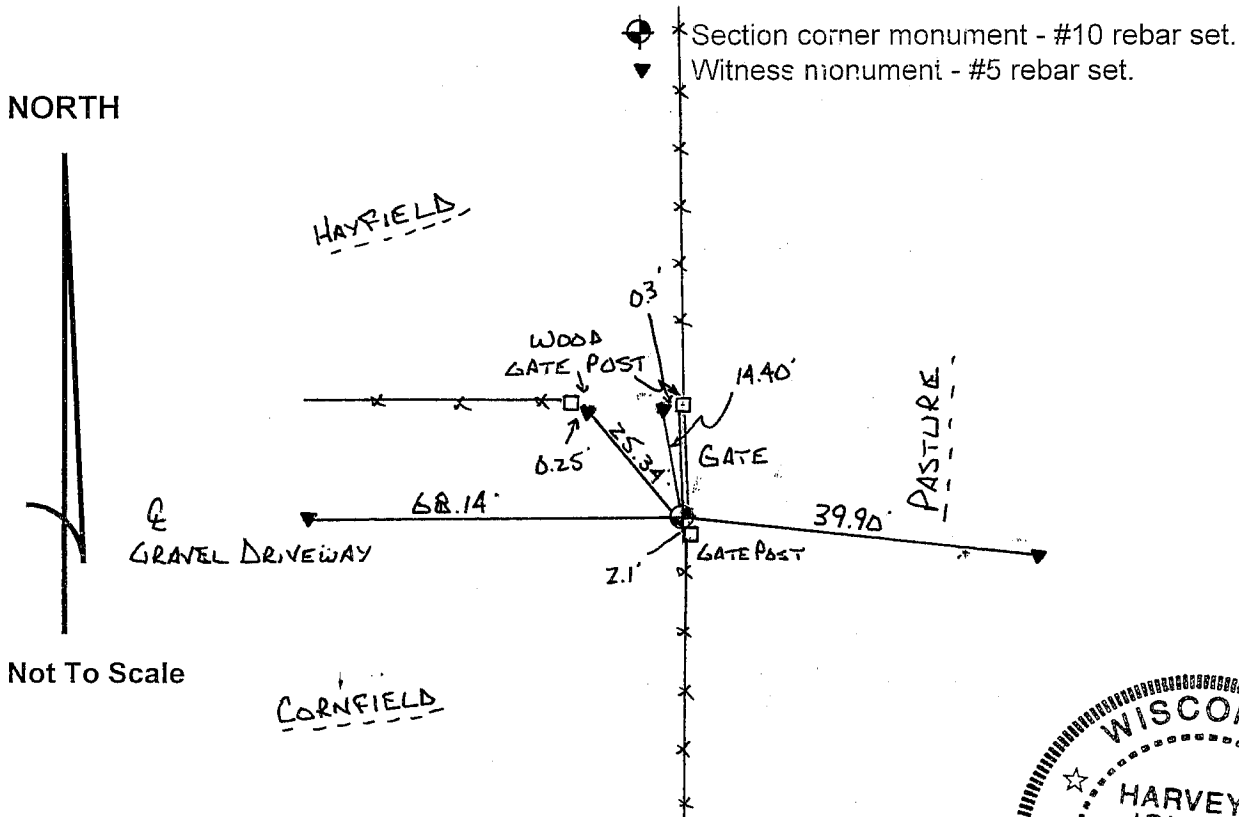
Datum: \_\_\_\_\_ E \_\_\_\_\_



(b)(f)(h) Description of monument found at this corner and if it was accepted, state all evidence (material, testimonial, occupational, plats records, other monuments) used as a basis for accepting. If not accepted or nothing was found, state evidence used as basis for establishing location and what was set. If re-established through lost corner proportionate methods, indicate all monuments, distances and directions used.

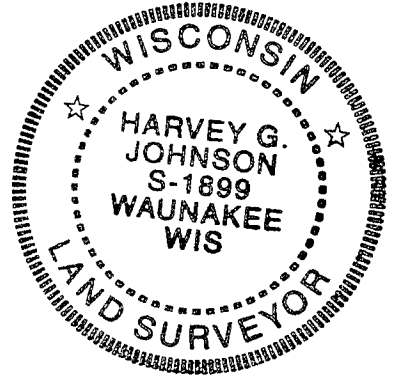
Used aerial photography to narrow search area down to a minimum. Fence line in area runs North – South at end of gravel driveway. Original government notes show section corner set one-half chain North of edge of marsh. I determined where the edge of marsh could have been, and chained thirty-three feet North. This position ended up about two feet North of the South gate post of a gate in the fence. Although I couldn't find documentation for placement of the driveway, this position is on the approximate centerline of said driveway. Corner was restored through acceptance of an obliterated evidence location.

(c)(d)(e) Plan view of corner with ties to at least four (4) witness monuments. If in disagreement with previously established corner, show the distances between the two corners and also indicate ties to disputed corner.



Not To Scale

(I) Certify that the corner location on this record was determined by me or under my direction and control and that this U.S. Public Land survey Monument Record is correct and complete to the best of my knowledge and belief.



Harvey Johnson                      Sept. 7, 2004  
Signature                                      Date

Filed for record in Grant County Surveyor's Office on \_\_\_\_\_ INDEX NO. 115