

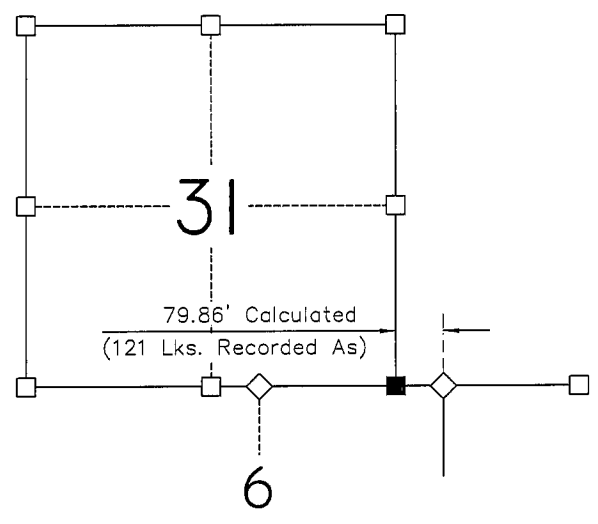
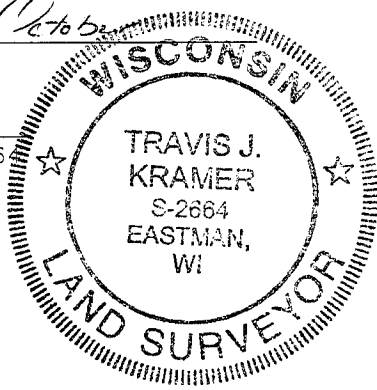
CERTIFIED LAND CORNER

STATE OF WISCONSIN)
 COUNTY OF GRANT) S.S.

CERTIFICATE

I, Travis J. Kramer, do hereby certify that
 on the 17th day of October, 2005
 I found (evidence)(~~no evidence~~) of the Southeast
Corner of Section 31, T. 5 N., R. 3 W.
 of the Fourth Principal Meridian, and I re-established
 said corner according to the Wisconsin Statutes as
 shown and described hereon.

Dated this 17th day of October
 Registered Land Surveyor S-2664



■ = CORNER LOCATION
 T 5 N R 3 W
 Town of North Lancaster

Seal

History of original corner establishment:

ORIGINAL GOVERNMENT SURVEY (EXTERIOR) BY LUCIUS LYON IN THE SECOND QUARTER OF 1832. CHARLES SAMPSON OCCUPIED THE CORNER IN A SURVEY FILED IN BOOK D, PAGE 239 IN THE GRANT COUNTY PROPERTY LISTERS OFFICE.

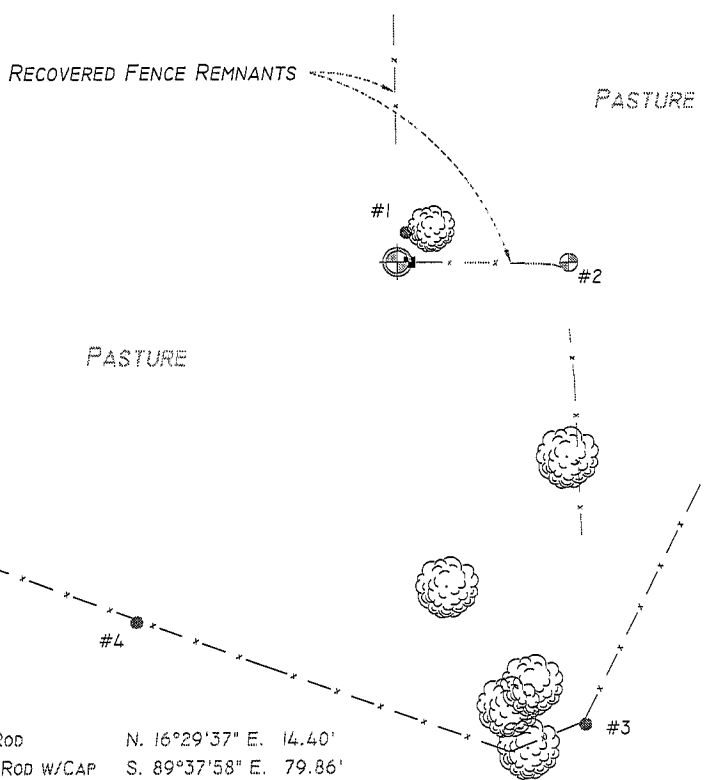
Description of corner evidence found:

CORNER WAS RESET ONLINE AND AT THE RECORDED OFFSET DISTANCE FROM THE NORTHEAST CORNER OF SECTION 6, TOWN 4 NORTH, RANGE 3 WEST. THE CORNER IS IN AGREEMENT WITH THE SURVEY PERFORMED BY CHARLES SAMPSON IN THE SECOND QUARTER OF 1895. IN ADDITION, BURIED FENCE REMNANTS WERE FOUND NORTH AND EAST OF THE CORNER, AND AN UNRECORDED STONE MEASURING 16"x 8"x 30" WAS RECOVERED IN THE VICINITY.

Description of corner and witness monuments, references and accessories used to perpetuate the original or re-established location of this corner:

Witnesses to corner location:
Travis J. Kramer
Jay P. Adams

Sketch:



- ⊕ 1 1/4" x 30" IRON ROD w/CAP SET AT CORNER LOCATION
- 5/8" x 24" IRON ROD SET AS ACCESSORY
- FOUND DISTURBED STONE LOCATED 3.5 FEET EAST OF CORNER

BEARINGS ARE REFERENCED TO THE WISCONSIN COUNTY COORDINATE SYSTEM (WCCS), GRANT COUNTY, NAD 83 (1991) ADJUSTMENT.

Accessory Ties:

- | | |
|--------------------------|-------------------------|
| 1. 5/8" IRON ROD | N. 16°29'37" E. 14.40' |
| 2. 1 1/4" IRON ROD W/CAP | S. 89°37'58" E. 79.86' |
| 3. 5/8" IRON ROD | S. 22°03'53" E. 233.66' |
| 4. 5/8" IRON ROD | S. 35°41'01" W. 206.83' |
| 5. 5/8" IRON ROD | S. 66°57'59" W. 292.66' |

SURVEY CONTROL ORDER

Horizontal	3rd
Vertical	-

GRANT COUNTY COORDINATE SYSTEM

Corner	North (Y)	East (X)	Elevation (Z)	Zone
Control Sta. Name	527232.615	804690.147	-	