

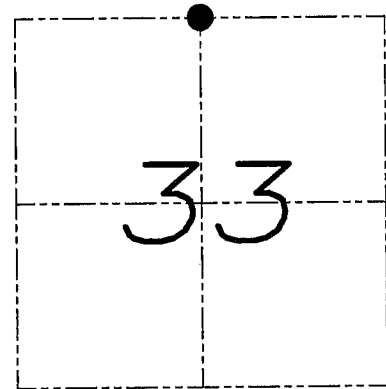
# U.S. PUBLIC LAND SURVEY MONUMENT RECORD

Section 33, Town 5 North Range 3 West, Town of North Lancaster, Grant County, Wisconsin

## CERTIFICATE

I, Larry L. Austin, do hereby certify that the corner location on this record was determined by me and/or under my direct supervision and that this U.S. public land survey monument record is correct and complete to the best of my knowledge and belief.

*Larry L. Austin*  
 Larry L. Austin, S-190903  
 LANCASTER  
 WI  
 LAND SURVEYOR  
 1-10-08  
 date



● = CORNER LOCATION

## HISTORY OF CORNER

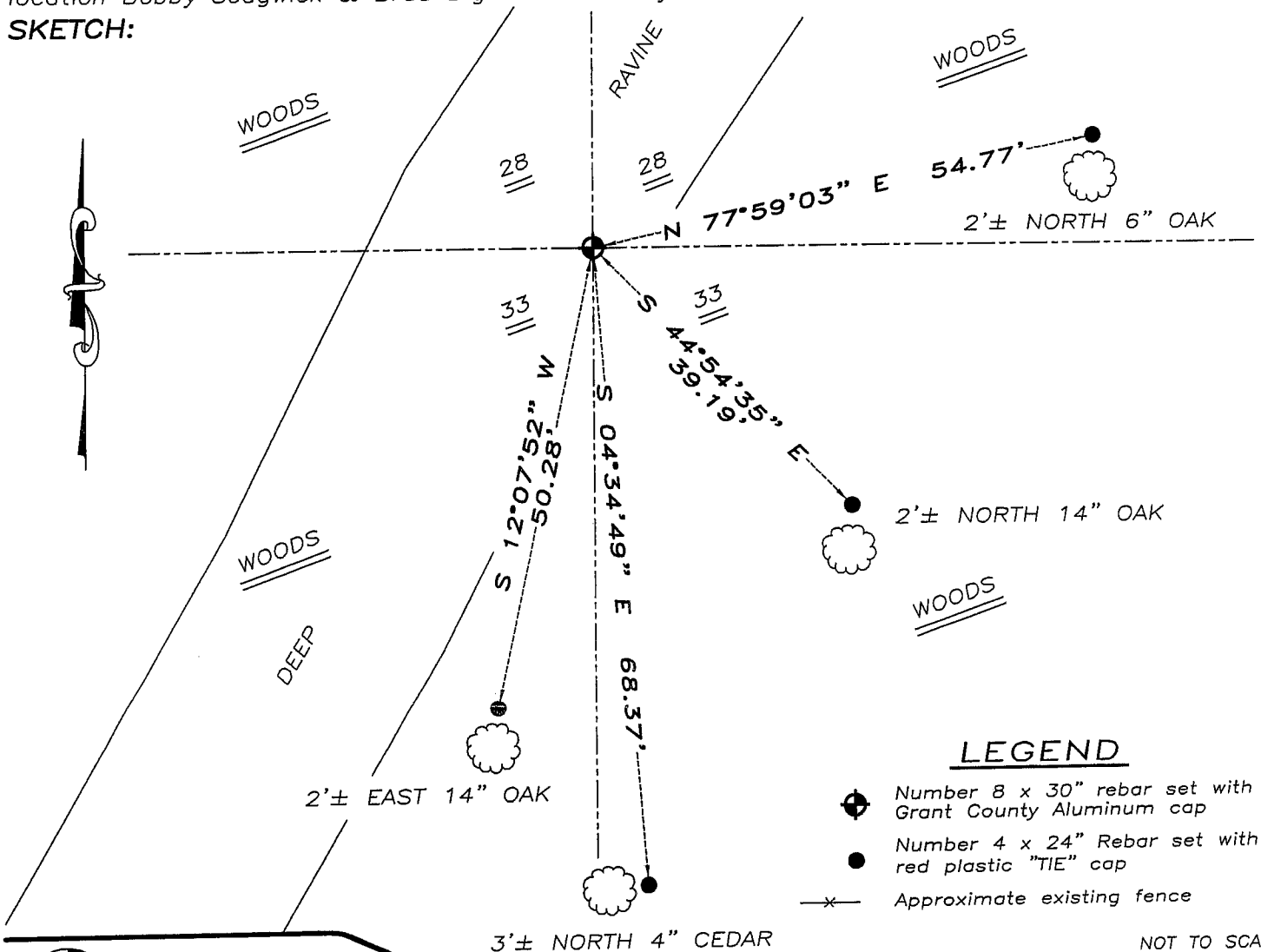
Corner was originally set in 1832-1833 by Parke. In 1880 Joel Barber found the original corner. In 1894 Sampson found the original corner. No other record of the corner was found.

## CORNER EVIDENCE FOUND

I was unable to locate the original corner. I reset the corner proportionately and on-line between the Northwest and Northeast corners of Section 33. Verified this location using EDM & GPS methods.

DESCRIPTION OF CORNER AND WITNESS MONUMENTS, references and accessories used to perpetuate the original or re-established location of this corner. Witnesses to monument location Bobby Sedgwick & Brad Digman & Shelby Blindert

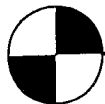
## SKETCH:



## LEGEND

- ⊕ Number 8 x 30" rebar set with Grant County Aluminum cap
- Number 4 x 24" Rebar set with red plastic "TIE" cap
- x- Approximate existing fence

NOT TO SCALE



**Austin Engineering LLC**

4211 HWY 81 E, LANCASTER, WI 53813  
 PHONE 608-723-6363 FAX 608-723-6702

JOB NUMBER 07S237(2)  
 FIELDBOOK: TDSR, 2710  
 G:\T5NR3W\27  
 H:\TIE\T5NR3W\108

DRAWN BY: SW AUSTIN  
 APPROVED: LL AUSTIN