

# U.S. PUBLIC LAND SURVEY MONUMENT RECORD - GRANT COUNTY, WI

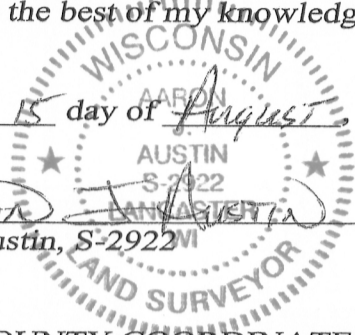
Section 25, Town 5 North Range 3 West, Town of North Lancaster

**CERTIFICATE:**

I, Aaron J. Austin, do hereby certify that the corner location on this record was determined by me and/or under my direct supervision and that this U.S. Public Land Survey Monument Record is correct and complete to the best of my knowledge and belief.

Dated this 15 day of August, 2013.

*Aaron J. Austin*  
 Aaron J. Austin, S-2922M



● = CORNER LOCATION

GRANT COUNTY COORDINATES: N=534961.18' E=828503.13'

**HISTORY OF CORNER ESTABLISHMENT:**

Corner was not set with original survey.

1844-Wiltse tied bearing trees to the center on a survey. (Book A, Page 231).

1983-Malliet set monuments along the N-S 1/4 line of Section 25. (Book I, Page 66).

2000-Zamor subdivided Section 25 by intersecting N-S 1/4 and E-W 1/4 lines. (CSM No. 673).

2011-I set monuments parallel to the E-W 1/4 line of Section 25. (Book 30, Page 31).

Corner was shown on Right of Way and Track Map, Chicago and North-Western Railway Lancaster Jct. to Lancaster. No other record of this corner was found.

**DESCRIPTION OF CORNER EVIDENCE FOUND:**

No bearing trees were recovered from 1844 Wiltse Survey. Corner was set at the intersection of the East-West 1/4 and the North-South 1/4 lines.

Corner location was verified by E.D.M. and G.P.S methods.

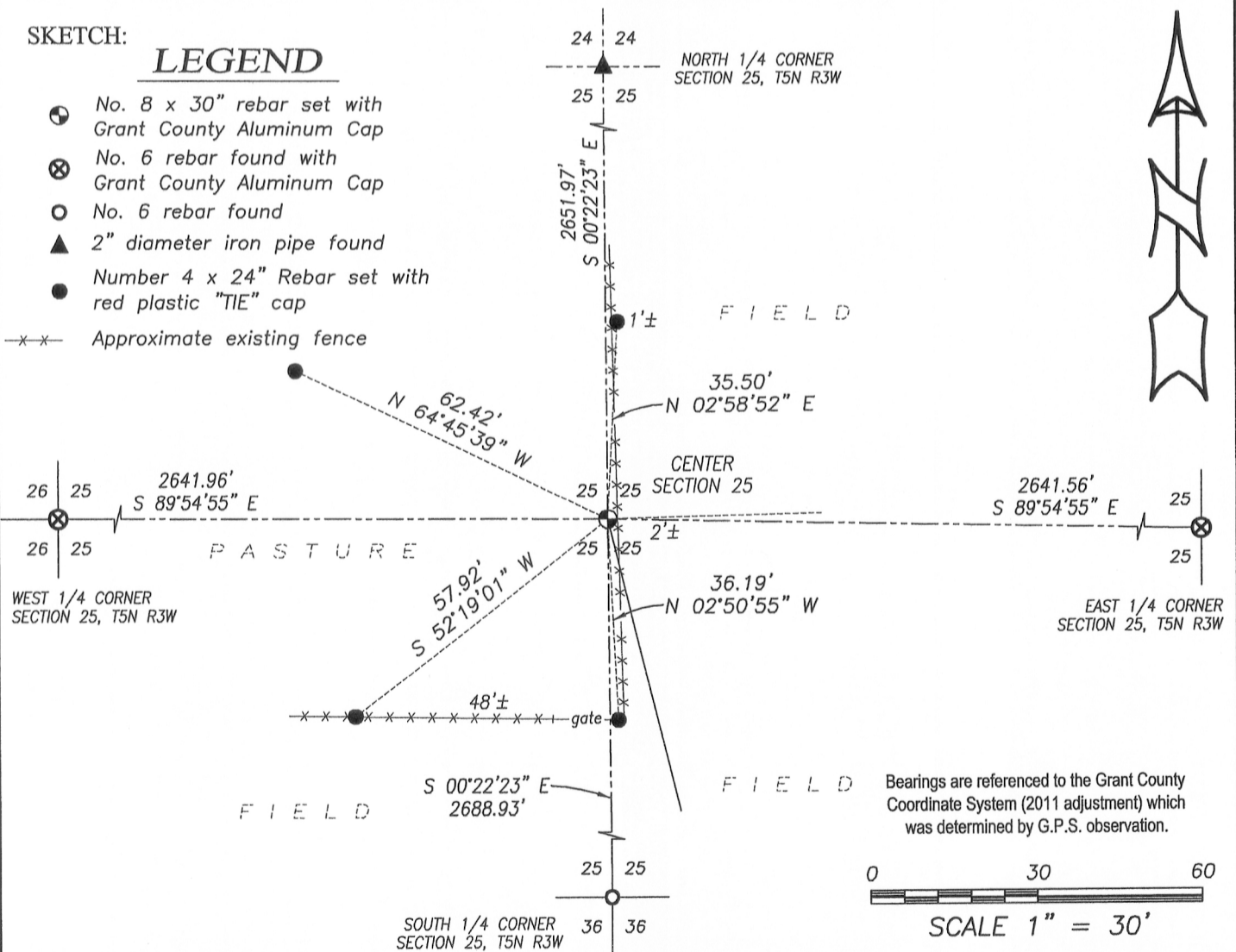
**DESCRIPTION OF CORNER AND WITNESS MONUMENTS, references and accessories used to perpetuate the original or re-established location of this corner. Witnesses to corner location Shane Austin.**

**SKETCH:**

**LEGEND**

- No. 8 x 30" rebar set with Grant County Aluminum Cap
- ⊗ No. 6 rebar found with Grant County Aluminum Cap
- No. 6 rebar found
- ▲ 2" diameter iron pipe found
- Number 4 x 24" Rebar set with red plastic "TIE" cap

-x-x- Approximate existing fence



**Austin Engineering LLC**  
 austinengineeringllc.com

4211 HWY 81 E, LANCASTER, WI 53813  
 PHONE: 608-723-6363 FAX: 608-723-6702

JOB NO: 11S192-A  
 G:\GRANTDOT\HWY61B  
 H:\TIE\T5NR3W\99.5

FIELDBOOK: TDSR  
 DRAWN BY: AJ AUSTIN  
 CREW: SW AUSTIN

99.5

AUG 15 2013