

U.S. PUBLIC LAND SURVEY MONUMENT RECORD - GRANT COUNTY, WI

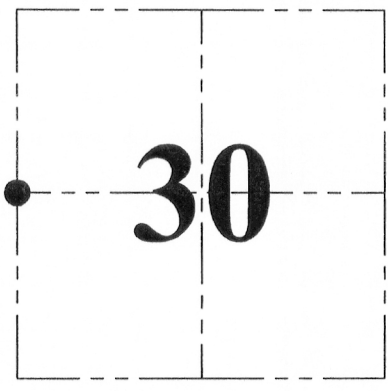
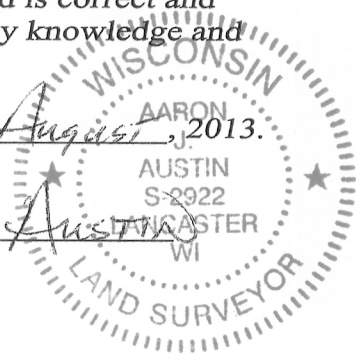
Section 30, Town 5 North Range 2 West, Town of Liberty

CERTIFICATE:

I, Aaron J. Austin, do hereby certify that the corner location on this record was determined by me and/or under my direct supervision and that this U.S. Public Land Survey Monument Record is correct and complete to the best of my knowledge and belief.

Dated this 15 day of August, 2013.

Aaron J. Austin
 Aaron J. Austin, S-2922



● = CORNER LOCATION

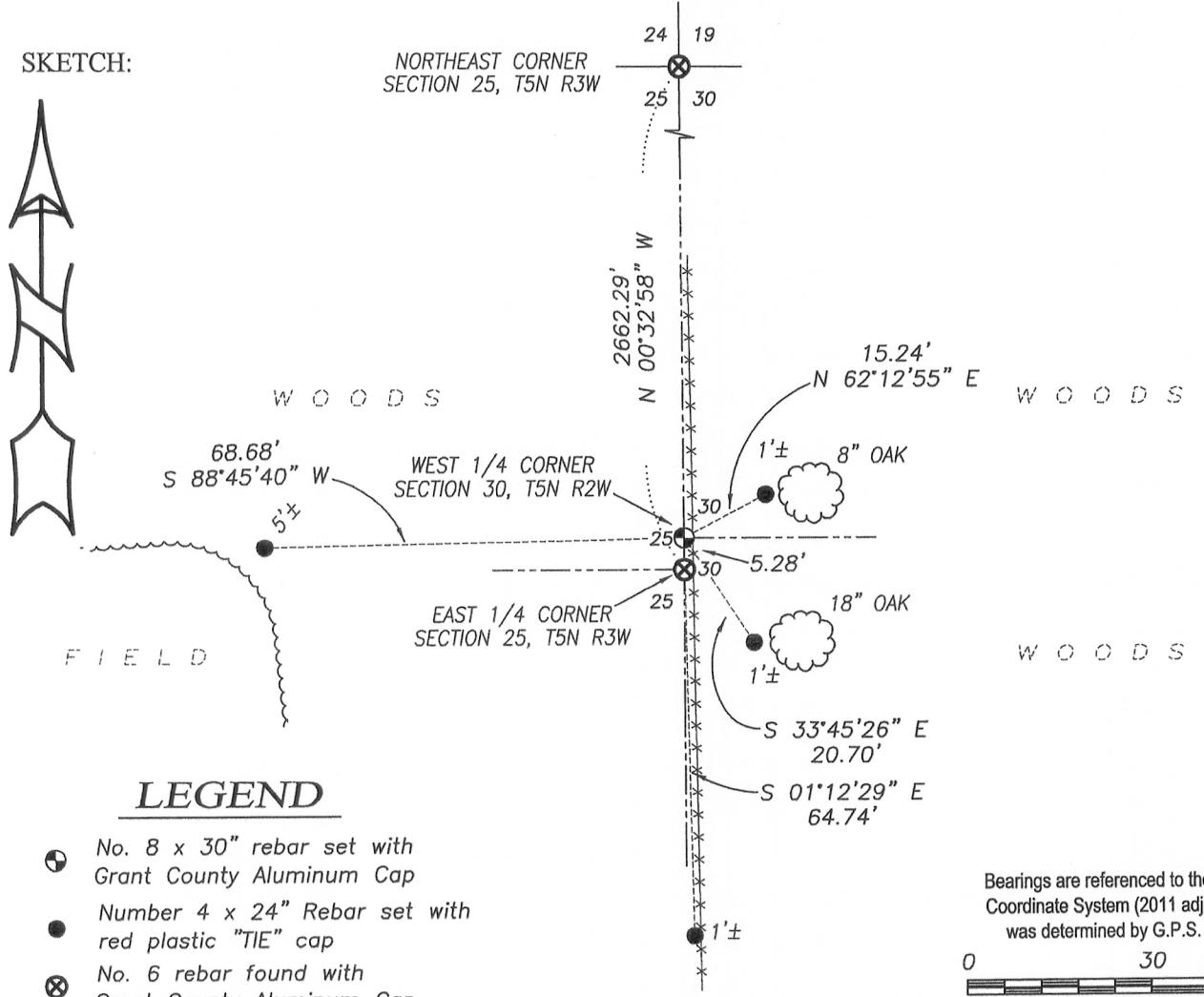
GRANT COUNTY COORDINATES: N=534962.56' E=831144.64'

HISTORY OF CORNER ESTABLISHMENT:
 Corner was not set with original survey.
 No record of this corner was found.

DESCRIPTION OF CORNER EVIDENCE FOUND:
 Corner was set on the East line of Section 25 at the recorded half offset from the East 1/4 corner of Section 25, T5N R3W. Corner location was verified by E.D.M. and G.P.S methods.

DESCRIPTION OF CORNER AND WITNESS MONUMENTS, references and accessories used to perpetuate the original or re-established location of this corner. Witnesses to corner location Shane Austin.

SKETCH:



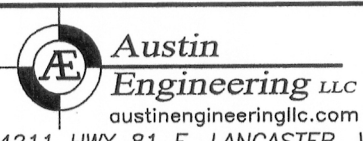
LEGEND

- ⊕ No. 8 x 30" rebar set with Grant County Aluminum Cap
- Number 4 x 24" Rebar set with red plastic "TIE" cap
- ⊗ No. 6 rebar found with Grant County Aluminum Cap
- x-x- Approximate existing fence

Bearings are referenced to the Grant County Coordinate System (2011 adjustment) which was determined by G.P.S. observation.

0 30 60

SCALE 1" = 30'



4211 HWY 81 E, LANCASTER, WI 53813
 PHONE: 608-723-6363 FAX: 608-723-6702

JOB NO: 11S192-A
 G:\GRANTDOT\HWY61B
 H:\TIE\T5NR2W\94

FIELDBOOK: TDSR
 DRAWN BY: AJ AUSTIN
 CREW: SW AUSTIN

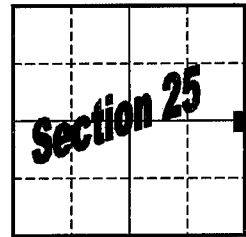
GRANT COUNTY

U.S. PUBLIC LAND SURVEY MONUMENT RECORD

East 1/4 Corner of Section 25
T 5 N, R 3 W, Town of North Lancaster

Type of monument: $\frac{3}{4}$ " Iron Bar with Grant County Aluminum Cap

Location indicated on sketch - ■



T 5 N, R 3 W

Describe and record evidence, monument evidence, occupational evidence, testimonial evidence or any other material evidence you considered, and whether the monument was found or placed.

Established corner by single proportionate measurement and on line between the Northeast and Southeast corners of Section 25.

Corner as established on line agrees with occupation and previous survey work by K.A.Kerst.

Found remains of occupation running East. However, the remnants found were too sparse and scattered to be used in determining any occupied location for the offset corner in Section 30. Also found sparse and scattered remains running West. The remains running West most likely being no more than a field fence. Looking through old plat books in the register of deeds office indicated that East-West one-quarter line of Section 25 has not been an occupied property division since at least 1917.

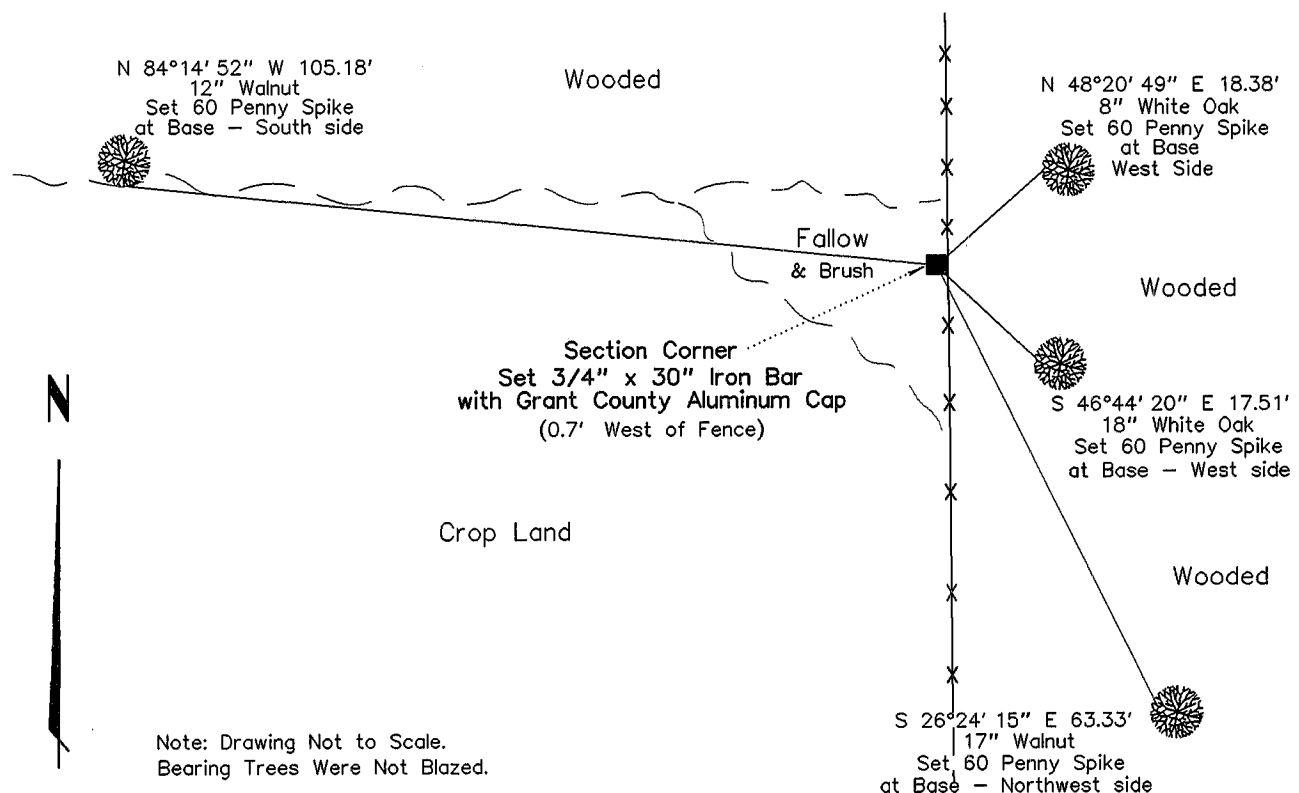
Conflicting evidence resulted from attempts to utilize the occupied South line of the NW $\frac{1}{4}$ of the NW $\frac{1}{4}$ of Section 30 or the occupied South line of the South $\frac{1}{4}$ of the SE $\frac{1}{4}$ of the NE $\frac{1}{4}$ of Section 25 in re-establishing North-South location.

Examined occupation along the East-West one-quarter line of Section 30, and determined that after accounting for original offset distance a corner location as re-established from said occupation would agree with a corner location by single proportion within approximately 7 feet North and South. This was considered a reasonable agreement, as said occupation ends approximately 1885 feet East of the corner area.

After examining the evidence above it was determined that the corner should be re-established by lost corner methods – single proportionate measurement.

Grant County Coordinates (survey feet): N=534957.020 E=831144.837

Show a plan view drawing depicting the relevant monuments, providing reference ties to at least four witness monuments. Describe witness monuments. Show relationship to occupation.



Note: Drawing Not to Scale.
 Bearing Trees Were Not Blazed.

