

GRANT COUNTY

Survey Monument Record

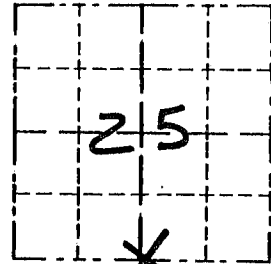
TYPE OF MONUMENT 3/4" X 24" IRON BAR
 STATE PLANE COORDINATES: N SET
 E _____
 ELEVATION — M.S.L. DATUM: _____
 THETA ANGLE: _____
 FIELD BOOK: 95-14
 PAGE _____

CORNER NO. 102
 SECTION 25
 TOWN 5N
 RANGE 3W

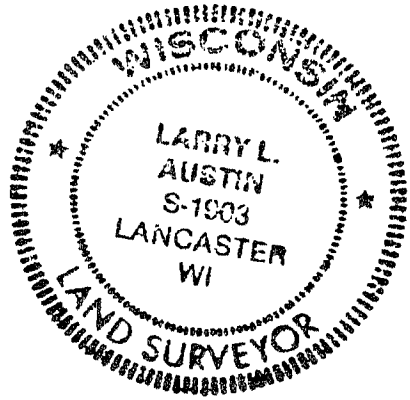
BASIS FOR MONUMENT LOCATION

(Use reverse side if necessary)

CORNER SET IN 1832
 BY HARVEY CLARKE.
 IN 1983 DOUGLAS MALLIET SEAL:
 SET A 2" IRON PIPE, BASED ON
 HIS LOCATION OF THE SW CORNER.
 I RE-ESTABLISHED THE S 1/4
 CORNER MIDWAY & ON LINE BETWEEN
 THE SE & SW CORNERS OF THE
 SECTION. VERIFIED THIS LOCATION
 BY EDM METHODS.



LOCATION
 (Indicated by "X")



CERTIFIED CORRECT

Larry L. Austin
 Registered Land Surveyor

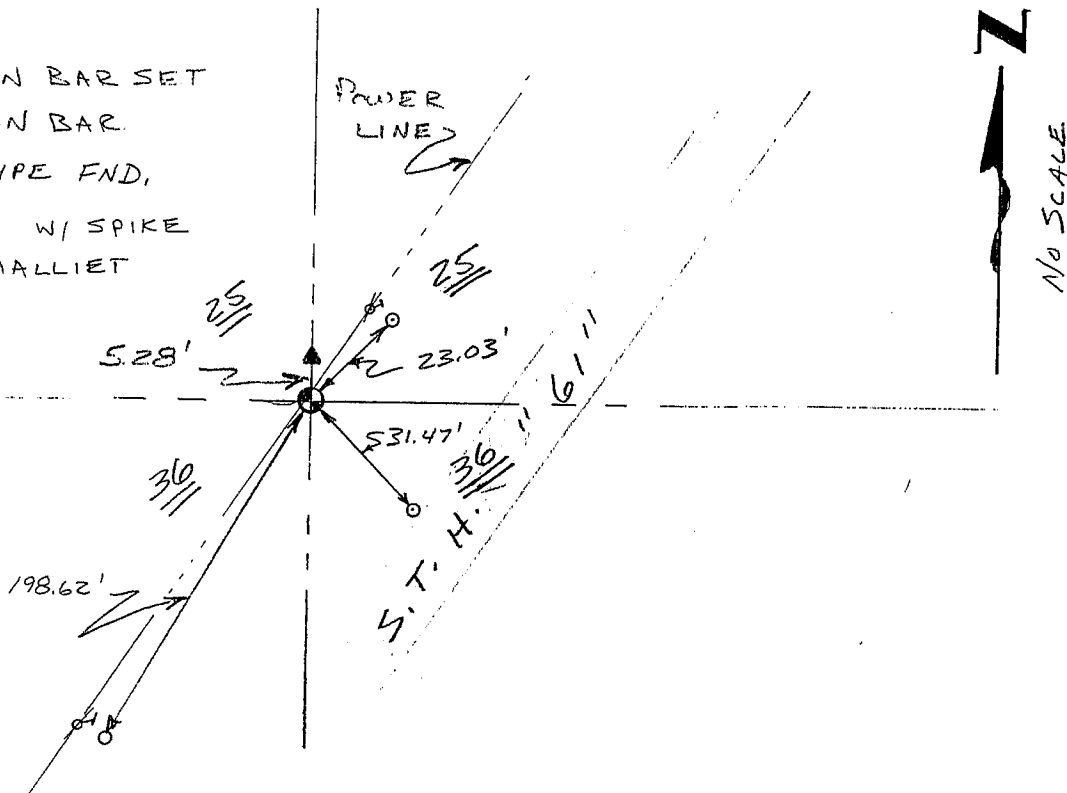
DATE: 8-31-96

TIE SKETCH

Show at least three (3) ties and monument.

LEGEND

- ⊕ 3/4" X 24" IRON BAR SET
- 1/2" X 18" IRON BAR
- ▲ 2" IRON PIPE FND.
- ⚡ POWER POLE W/ SPIKE SET BY MALLIET



North Lancaster Township

U.S. PUBLIC LAND SURVEY MONUMENT RECORD

CORNER DESCRIPTION: 1/4 CORNER, SECTION 25, T 5 N, R 3 W

STATE PLANE COORDINATES: N _____, E _____

THETA ANGLE: _____

HORIZONTAL DATUM: WISCONSIN STATE PLANE COORDINATE SYSTEM, SOUTH ZONE

EVIDENCE: NO CORNER MONUMENT OF RECORD - OCCUPATION UTILIZED TO ESTABLISH THE SW & SE SECTION CORNERS OF 25; 1/4 CORNER SET AT PROBATED DISTANCE

MONUMENT: FOUND , PLACED

METHOD OF RESTORATION (RE-ESTABLISHMENT):

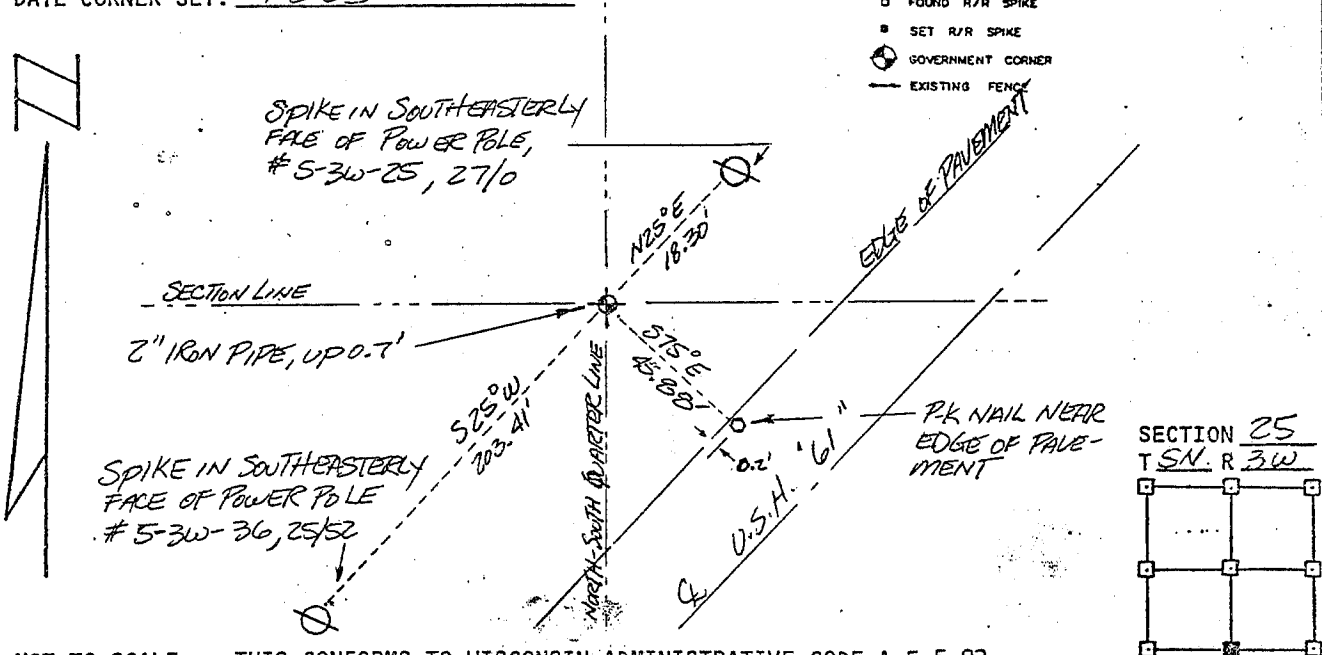
ACCEPTED EXISTING MONUMENT

N , E ACCEPTED OCCUPATION

N , E LOST CORNER PROPORTIONATE METHODS

DATE CORNER SET: 4-8-83

- LEGEND
- ▲ SET #6 REBAR, 1.13 LBS. PER LINEAL FT. MIN. WT.
 - SET 1" x 24" IRON PIPE, 1.13 LBS. PER LINEAL FT. MIN. WT.
 - SET 2" x 30" IRON PIPE, 3.65 LBS. PER LINEAL FT. MIN. WT.
 - FOUND 1" IRON PIPE
 - FOUND 2" IRON PIPE
 - FOUND R/R SPIKE
 - SET R/R SPIKE
 - ⊙ GOVERNMENT CORNER
 - EXISTING FENCE



NOT TO SCALE THIS CONFORMS TO WISCONSIN ADMINISTRATIVE CODE A-E 5.02

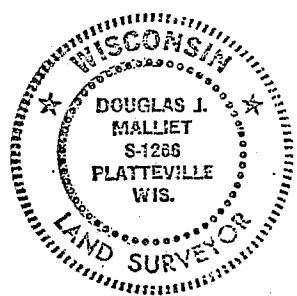
SURVEYOR'S AFFIDAVIT:

STATE OF WISCONSIN) COUNTY) SS

I hereby certify that I, DOUGLAS J. MALLIET, have complied with the Wisconsin State Statutes, Statutes of the United States, and the rules and regulations made by the Secretary of the Interior in the location of the corner shown above.

DATE OF SURVEY: 4-8-83

Douglas J. Malliet
REGISTERED LAND SURVEYOR
1266



D. F. BURBACH MUNICIPAL & CIVIL ENGINEERS

410 NORTH SECOND STREET • PLATTEVILLE, WISCONSIN 53818 • (608) 348-3282

MAY 24 1983

p-102