

U.S. PUBLIC LAND SURVEY MONUMENT RECORD - GRANT COUNTY, WI

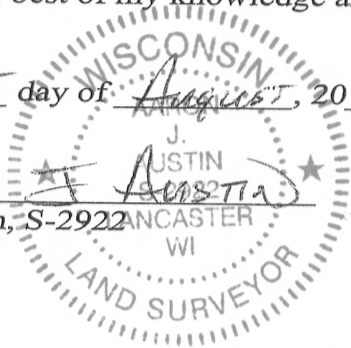
Section 24, Town 5 North Range 3 West, Town of North Lancaster

CERTIFICATE:

I, Aaron J. Austin, do hereby certify that the corner location on this record was determined by me and/or under my direct supervision and that this U.S. Public Land Survey Monument Record is correct and complete to the best of my knowledge and belief.

Dated this 15 day of August, 2013.

Aaron J. Austin
 Aaron J. Austin, S-2922 Lancaster WI



● = CORNER LOCATION

GRANT COUNTY COORDINATES: N=540274.71 E=831092.97

HISTORY OF CORNER ESTABLISHMENT:

Corner was originally set by Lucius Lyon in 1832.
 No other record of this corner was found.

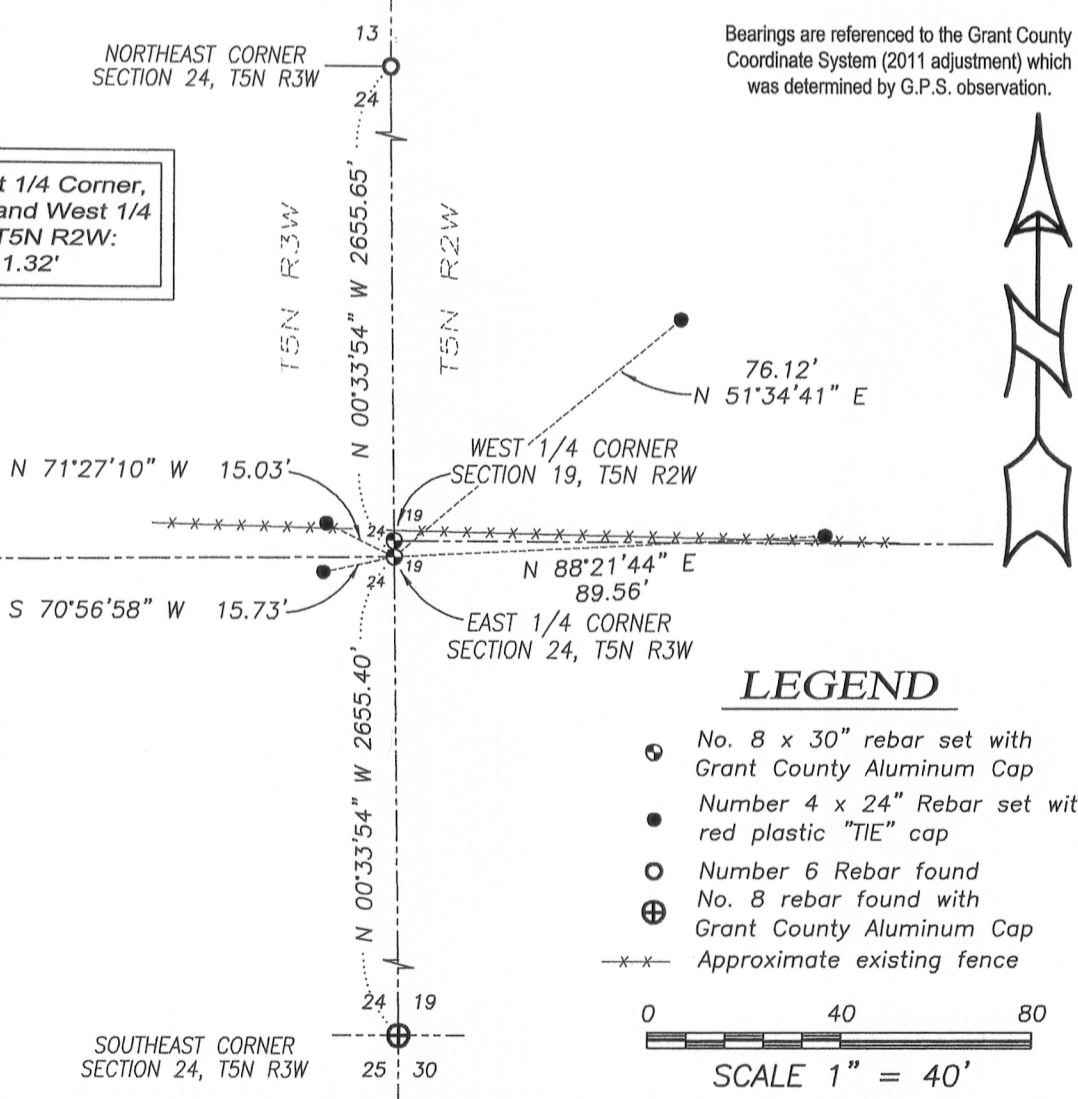
DESCRIPTION OF CORNER EVIDENCE FOUND:

Corner was set on a straight line between the Northeast corner and Southeast corner of Section 24 at the recorded prorated offset from the West 1/4 Corner of Section 19. Corner location was verified by E.D.M. and G.P.S methods.

DESCRIPTION OF CORNER AND WITNESS MONUMENTS, references and accessories used to perpetuate the original or re-established location of this corner. Witnesses to corner location Shane Austin.

SKETCH:

Distance between East 1/4 Corner, Section 24, T5N R3W and West 1/4 Corner Section 19, T5N R2W:
 N 00°33'54" W 1.32'



Austin Engineering LLC
 austinengineeringllc.com
 4211 HWY 81 E, LANCASTER, WI 53813
 PHONE: 608-723-6363 FAX: 608-723-6702

JOB NO: 11S192-A
 G:\GRANTDOT\HWY61B
 H:\TIE\T5NR3W\80

FIELDBOOK: TDSR
 DRAWN BY: AJ AUSTIN
 CREW: SW AUSTIN

U.S. PUBLIC LAND SURVEY MONUMENT RECORD - GRANT COUNTY, WI

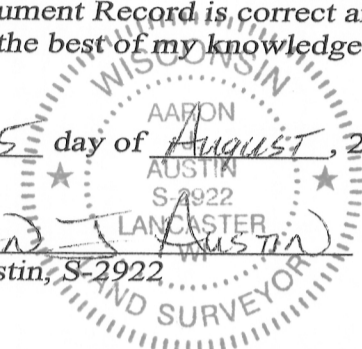
Section 19, Town 5 North Range 2 West, Town of Liberty

CERTIFICATE:

I, Aaron J. Austin, do hereby certify that the corner location on this record was determined by me and/or under my direct supervision and that this U.S. Public Land Survey Monument Record is correct and complete to the best of my knowledge and belief.

Dated this 15 day of August, 2013.

Aaron J. Austin
 Aaron J. Austin, S-2922



● = CORNER LOCATION

GRANT COUNTY COORDINATES: N=540276.03 E=831092.96

HISTORY OF CORNER ESTABLISHMENT:

Corner was not set with original survey. In 1844 Wiltse set the corner on a survey filed in Book A, Page 227. Corner was shown on Plat of Right of Way Division Job No. 9577. Corner was shown on Right of Way and Track Map, Chicago and North-Western Railway Lancaster Jct. to Lancaster. No other record of this corner was found.

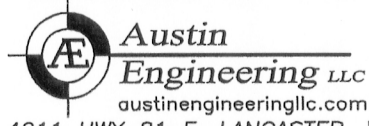
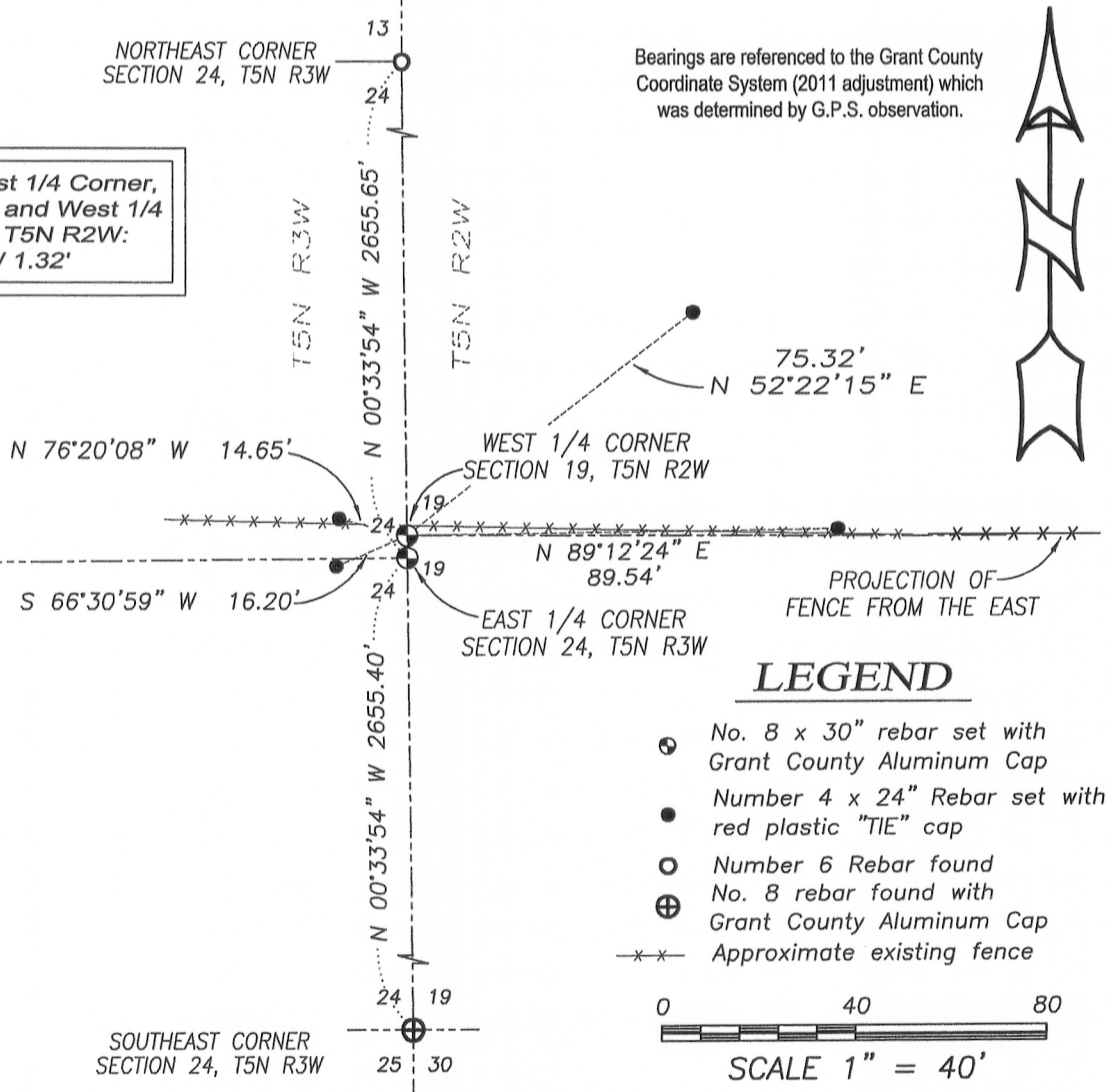
DESCRIPTION OF CORNER EVIDENCE FOUND:

Corner was set at a projection of the fence from the East on a straight line between the Northeast corner and Southeast corner of Section 24.
 Corner location was verified by E.D.M. and G.P.S methods.

DESCRIPTION OF CORNER AND WITNESS MONUMENTS, references and accessories used to perpetuate the original or re-established location of this corner. Witnesses to corner location Shane Austin.

SKETCH:

Distance between East 1/4 Corner, Section 24, T5N R3W and West 1/4 Corner Section 19, T5N R2W:
 N 00°33'54" W 1.32'



4211 HWY 81 E, LANCASTER, WI 53813
 PHONE: 608-723-6363 FAX: 608-723-6702

JOB NO: 11S192-A
 G:\GRANTDOT\HWY61B
 H:\TIE\T5NR2W\74

FIELDBOOK: TDSR
 DRAWN BY: AJ AUSTIN
 CREW: SW AUSTIN