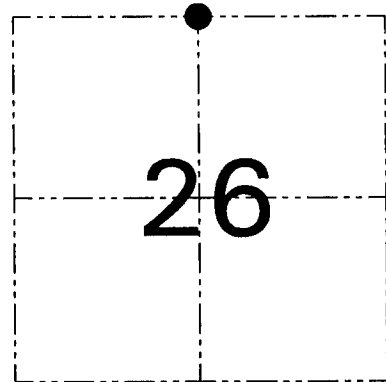
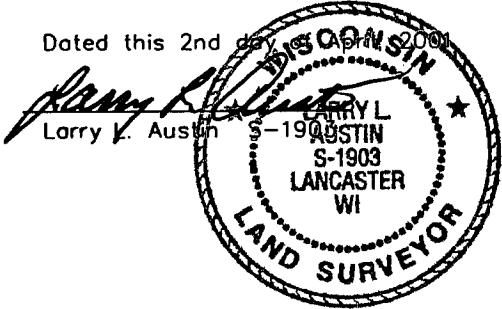


U.S. PUBLIC LAND SURVEY MONUMENT RECORD - GRANT COUNTY, WI
 Section 26, Town 5 North Range 3 West, Town of North Lancaster

CERTIFICATE

I, Larry L. Austin, do hereby certify that the corner location on this record was determined by me and/or under my direct supervision and that this U.S. public land survey monument record is correct and complete to the best of my knowledge and belief.

Dated this 2nd day of April, 2001



● = CORNER LOCATION

HISTORY OF CORNER ESTABLISHMENT

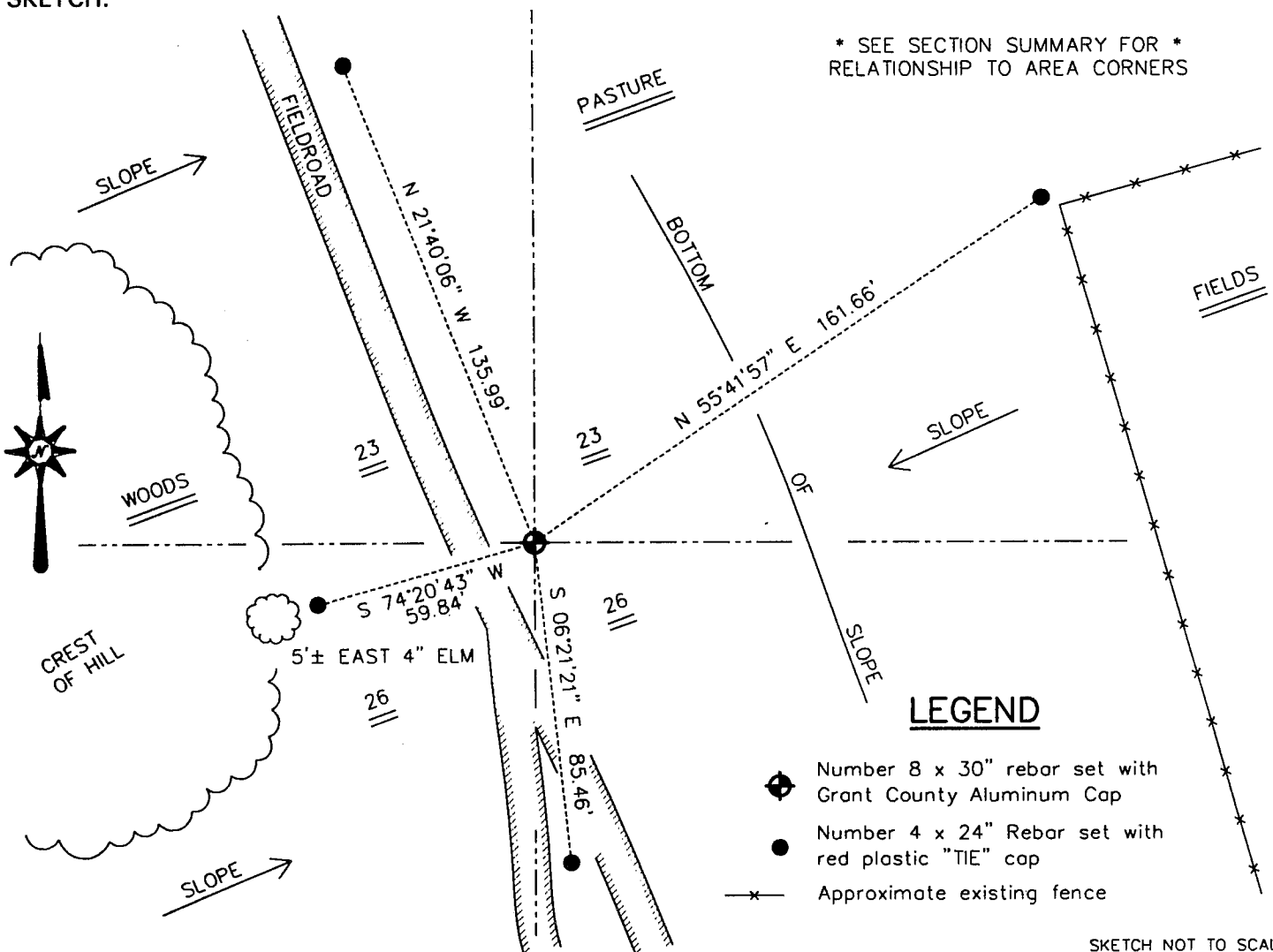
Corner was originally set in 1832 by Harvey Parke. In 1844 Wiltse tied to the corner. No other record of the corner was found.

DESCRIPTION OF CORNER EVIDENCE FOUND

I found no evidence to the location of the corner. I reset the corner proportionately between the Northwest and Northeast corners of Section 26. Verified this location using EDM & GPS methods.

DESCRIPTION OF CORNER AND WITNESS MONUMENTS, references and accessories used to perpetuate the original or re-established location of this corner. Witnesses to the corner location Bobby Sedgwick & Shelby Blindert & Shane Austin & Tim Fauver.

SKETCH:



SKETCH NOT TO SCALE

AUSTIN ENGINEERING, LLC
 4211 HWY 81 EAST, LANCASTER, WI 53813
 PHONE 608-723-6363 FAX 608-723-6702

FIELDBOOK: SDR33, 2102
 G: \T5NR3W\27
 C: \SWA\TIE\T5NR3W\84
 CREW: BS-SB-SA-TF

DRAWN BY: SW AUSTIN
 APPROVED: LL AUSTIN

CORNER NUMBER 84