

GRANT COUNTY CERTIFIED LAND CORNER

CORNER NUMBER 85

CERTIFICATE:

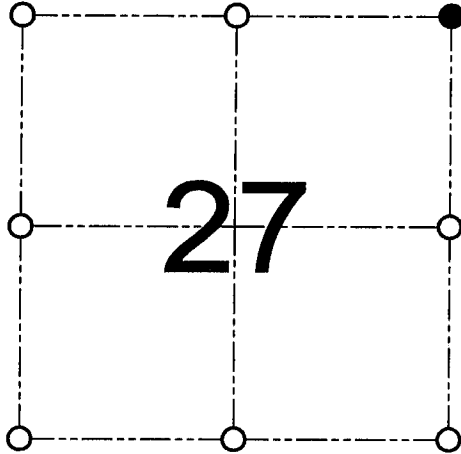
I, Larry L. Austin, do hereby certify that on the 17th day of August, 1999, I found evidence of the Northeast corner of Section 27, Town 5 North, Range 3 West, of the 4th Principal Meridian, and I re-established said corner according to the Wisconsin statutes as shown and described hereon.

Dated this 23rd day of October, 2000

Larry L. Austin
Larry L. Austin S-1903



SEAL



● = CORNER LOCATION

NORTHEAST CORNER OF
SECTION 27, T 5 N R 3 W
TOWN OF NORTH LANCASTER

HISTORY OF ORIGINAL CORNER ESTABLISHMENT:

Corner was originally set in 1833 by Harvey Parke.
Corner was tied to in 1875 by Joel Barber.

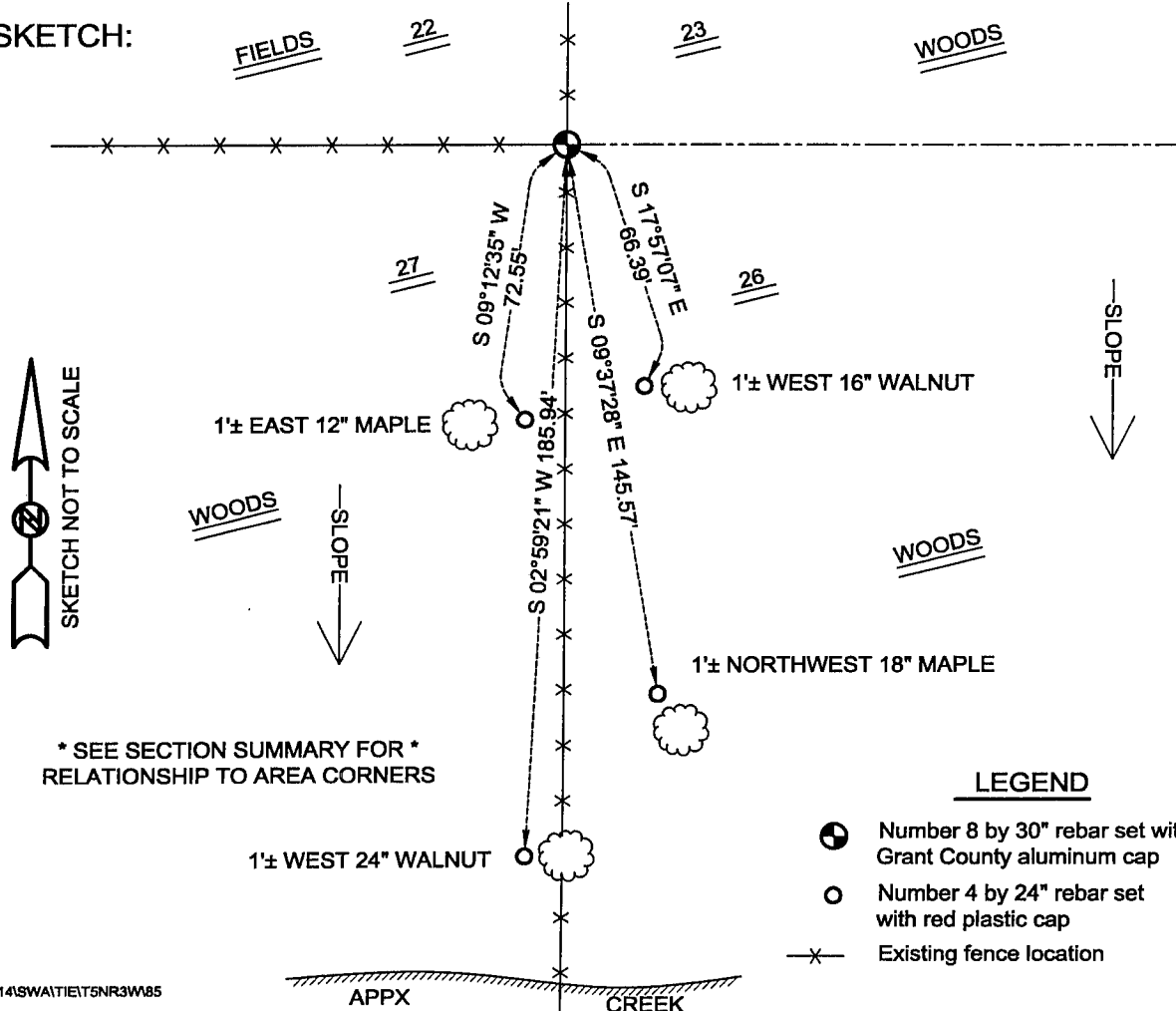
DESCRIPTION OF CORNER EVIDENCE FOUND:

I found an existing fence corner and accepted it's location.
Verified this location using E.D.M. & G.P.S. methods.

DESCRIPTION OF CORNER AND WITNESS MONUMENTS, references and accessories used to perpetuate the original or re-established location of this corner

WITNESS TO THE CORNER LOCATION: SHELBY BLINDERT & BOBBY SEDGWICK

SKETCH:



* SEE SECTION SUMMARY FOR *
RELATIONSHIP TO AREA CORNERS

LEGEND

- Number 8 by 30" rebar set with Grant County aluminum cap
- Number 4 by 24" rebar set with red plastic cap
- x— Existing fence location