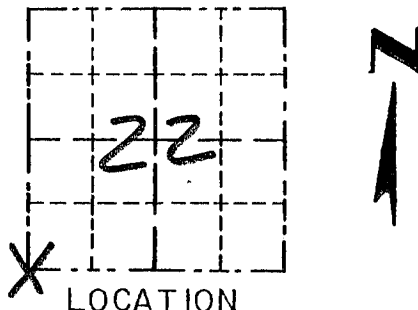


Survey Monument Record

TYPE OF MONUMENT 3/4" X 24" IRON
BAR SET

CORNER NO. 87
SECTION 22
TOWN 5N
RANGE 3W

FIELD BOOK: 96-17
PAGE 5

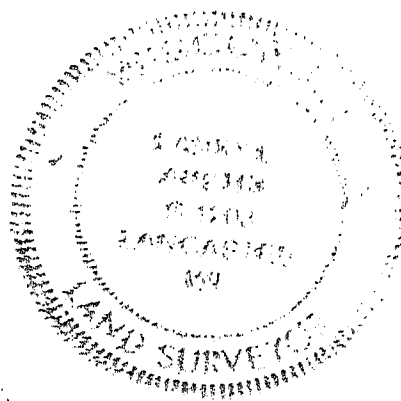


BASIS FOR MONUMENT LOCATION

(Use reverse side if necessary)

Show info such as: History of corner, with reference to Vol. and pg., dates, surveyor; exact description of monument replaced; if location computed, by taped or EDM traverse; landowner, remarks, etc.

SEAL:



CORNER SET BY HARVEY CLARK. NO RECORD OF CORNER FOUND SINCE ORIGINAL SURVEY; CORNER WAS SET AT A PRORATED DISTANCE BETWEEN THE SW 1/4 OF SECTION 21 AND THE SE CORNER OF SECTION 22 FOR EASTING. NOTHING WAS BASED ON OCCUPATION TO THE EAST. VERIFIED ITS LOCATION USING EDM METHODS.

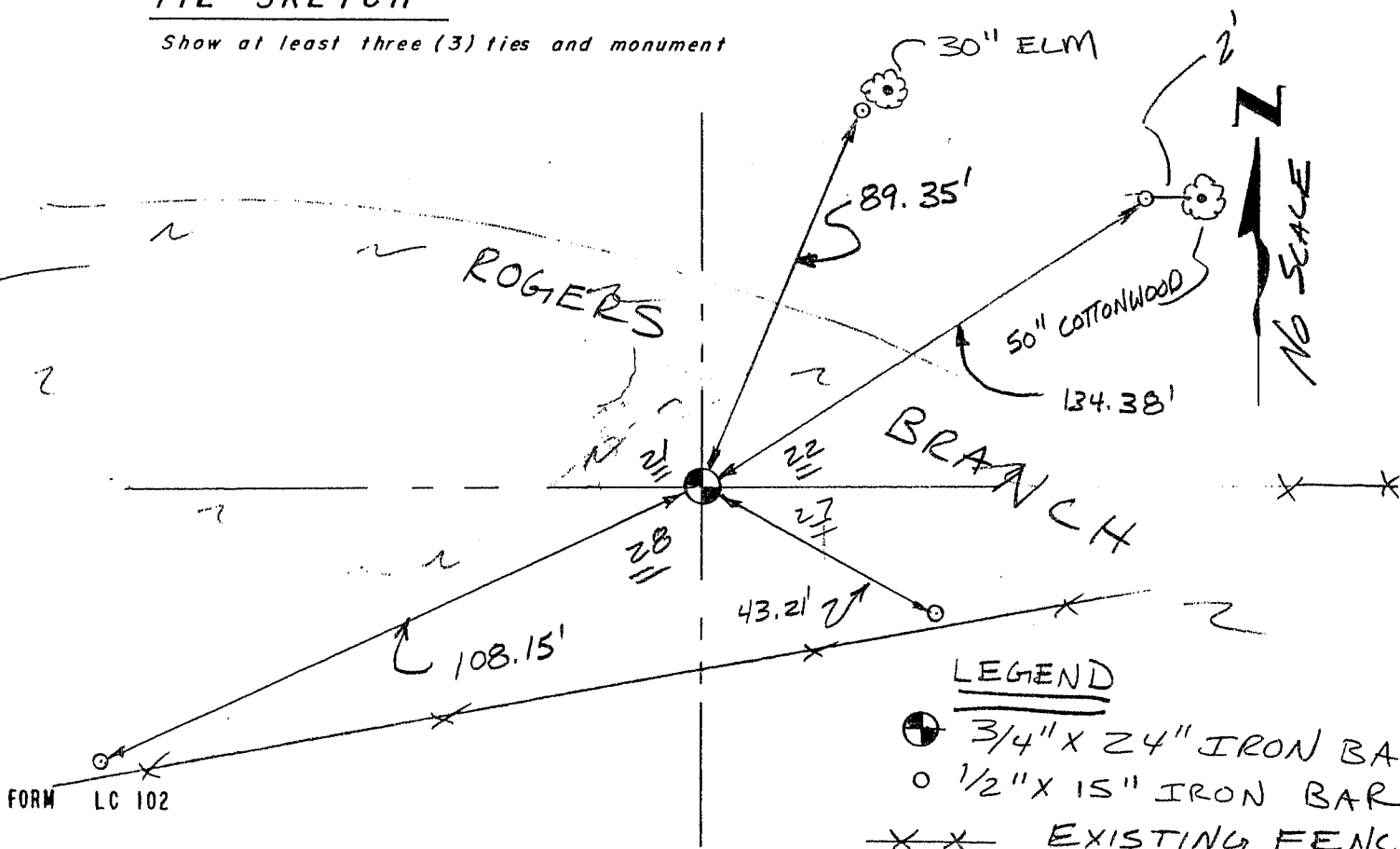
CERTIFIED CORRECT

Harvey J. Clark
Registered Land Surveyor

DATE: 7-30-77

TIE SKETCH

Show at least three (3) ties and monument



- LEGEND
- 3/4" X 24" IRON BAR
 - 1/2" X 15" IRON BAR
 - X-X- EXISTING FENCE