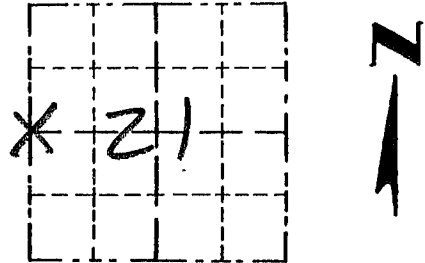


Survey Monument Record

TYPE OF MONUMENT 3/4" x 24" IRON BAR SET

CORNER NO. 76
 SECTION 21
 TOWN SN
 RANGE 3W

FIELD BOOK: 96-17
 PAGE (5)



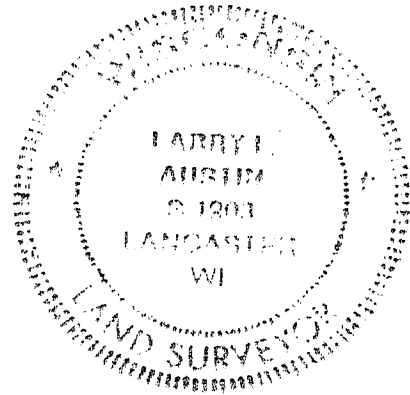
LOCATION
(Indicated by "X")

BASIS FOR MONUMENT LOCATION

(Use reverse side if necessary)

Show info such as: History of corner, with reference to Vol. and pg., dates, surveyor; exact description of monument replaced; if location computed, by taped or EDM traverse; landowner, remarks, etc.

SEAL:



CORNER SET BY HARVEY CLARK. NO RECORD OF CORNER FOUND SINCE ORIGINAL SURVEY; CORNER WAS SET MIDWAY BETWEEN THE NW AND SW CORNER OF SECTION 21 FOR NORTHING. THE EASTING WAS SET BY A NORTH/SOUTH FENCE. VERIFIED ITS LOCATION USING EDM METHODS.

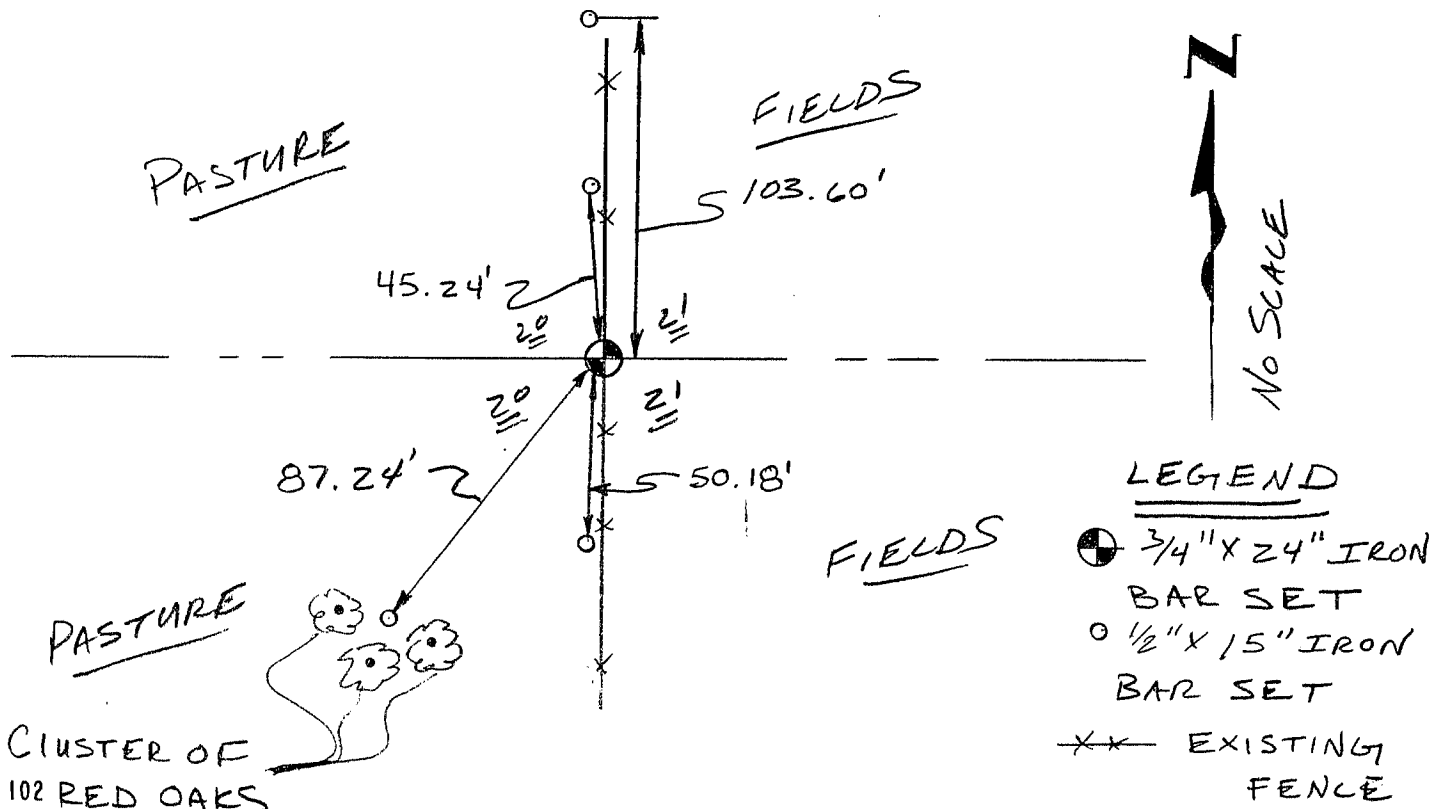
CERTIFIED CORRECT

Larry V. Austin
 Registered Land Surveyor

DATE: 7-30-97

TIE SKETCH

Show at least three (3) ties and monument



LEGEND

- 3/4" x 24" IRON BAR SET
- 1/2" x 15" IRON BAR SET
- XX EXISTING FENCE

CLUSTER OF RED OAKS