


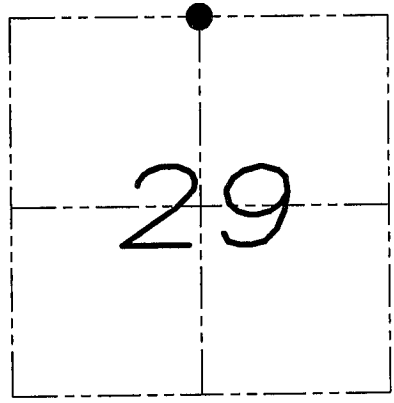
U.S. PUBLIC LAND SURVEY MONUMENT RECORD

Section 29, Town 5 North Range 3 West, Town of North Lancaster, Grant County, Wisconsin

CERTIFICATE

I, Larry L. Austin, do hereby certify that the corner location on this record was determined by me and/or under my direct supervision and that this U.S. public land survey monument record is correct and complete to the best of my knowledge and belief.

Larry L. Austin
 Larry L. Austin, S-1903, S-1903, LANCASTER, WI date 3/1/07




● = CORNER LOCATION

HISTORY OF CORNER

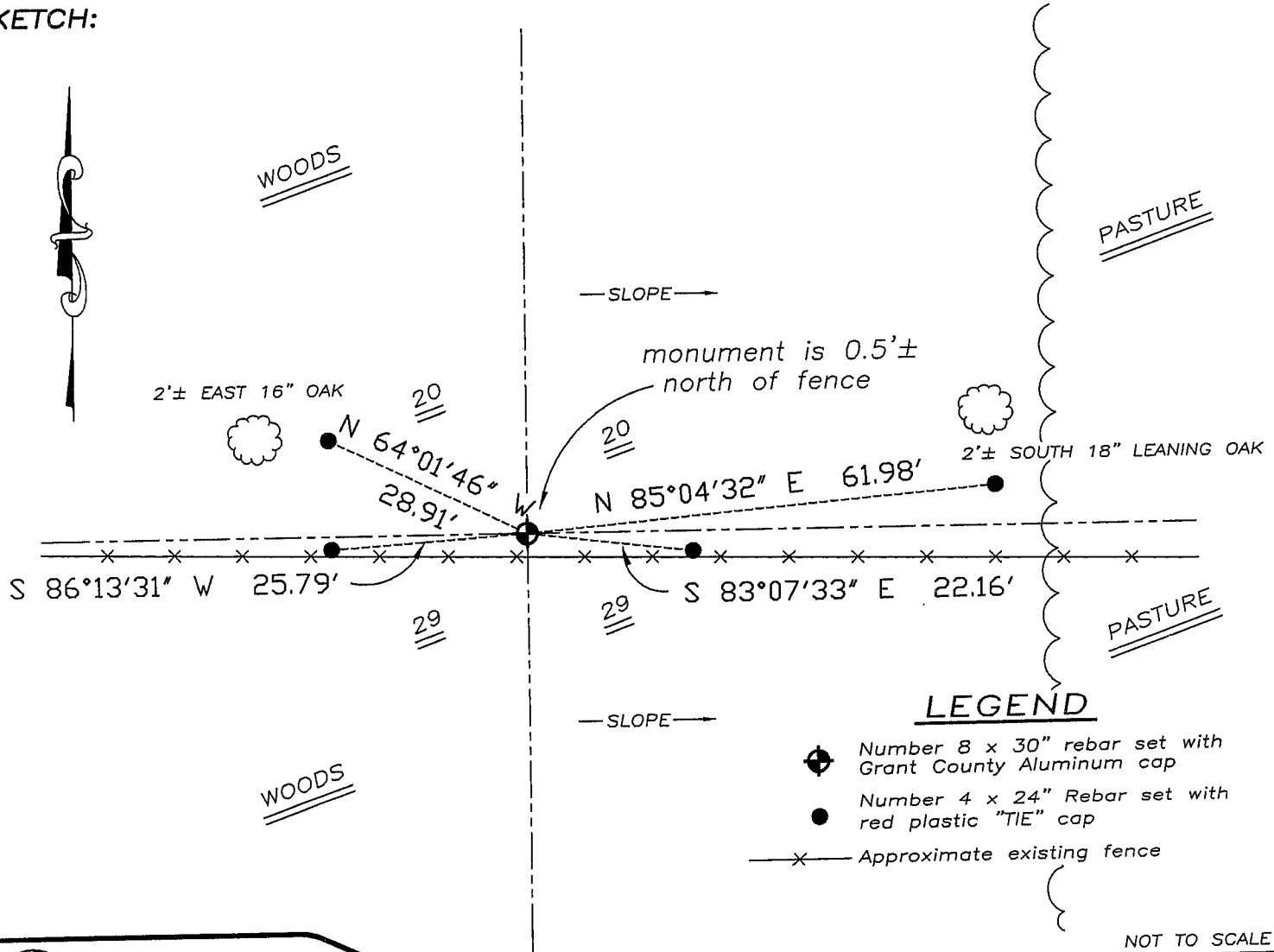
Corner was originally set in 1832 by Parker. No recent record of the corner was found.

CORNER EVIDENCE FOUND


I reset the corner proportionately and on-line between the Northwest and Northeast corners. Verified this location using EDM & GPS methods.

DESCRIPTION OF CORNER AND WITNESS MONUMENTS, references and accessories used to perpetuate the original or re-established location of this corner. Witnesses to monument location Bobby Sedgwick & Brad Digman & Shelby Blindert

SKETCH:



NOT TO SCALE

 **Austin Engineering LLC**
 4211 HWY 81 E, LANCASTER, WI 53813
 PHONE 608-723-6363 FAX 608-723-6702

JOB NUMBER 06S329
 FIELDBOOK: TDSR, 2701
 G:\T5NR3W\08
 H:\TIE\T5NR3W\90

DRAWN BY: BL STANFLEY
 APPROVED: LL AUSTIN