

MAR 24 2000

# GRANT COUNTY CERTIFIED LAND CORNER

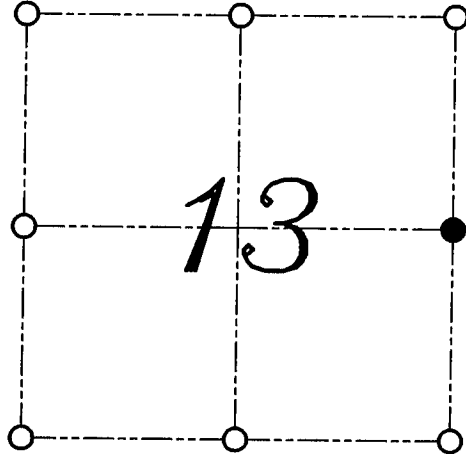
**CERTIFICATE:**

I, Larry L. Austin, do hereby certify that on the 9th day of September, 1999, I found evidence of the East 1/4 corner of Section 13, Town 5 North, Range 3 West, of the Fourth Principal Meridian, and I re-established said corner according to the Wisconsin Statutes as shown and described hereon.

DATED THIS 31st DAY OF JANUARY, 2000

*Larry L. Austin*  
Larry L. Austin S-1903

CORNER NUMBER 60



● = CORNER LOCATION

EAST 1/4 CORNER OF  
SECTION 13, T 5 N R 3 W  
TOWN OF NORTH LANCASTER



**HISTORY OF ORIGINAL CORNER ESTABLISHMENT:**

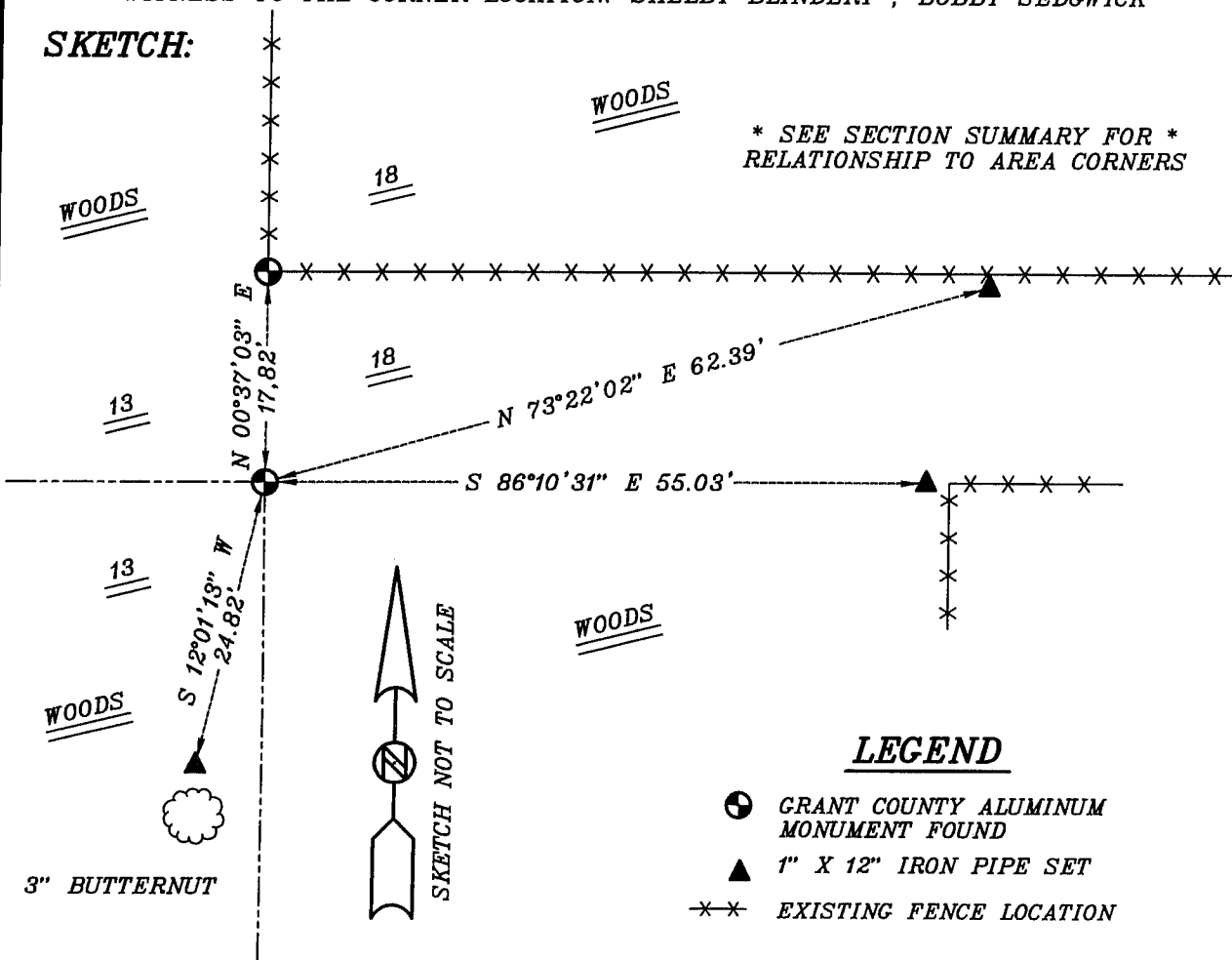
Corner was originally set in 1832 by Sibley.  
Joel Barber tied to the corner in 1875 and found  
the corner to be 27 Links South of the West 1/4 of Section 18.

**DESCRIPTION OF CORNER EVIDENCE FOUND:**

I found an occupied fence corner at the West 1/4 of Section Eighteen.  
I set the East 1/4 of Section Thirteen 27 Links South of the fence  
corner. Verified this location using E.D.M. and G.P.S. methods.

**DESCRIPTION OF CORNER AND WITNESS MONUMENTS, references and accessories used to perpetuate the original or re-established location of this corner**  
WITNESS TO THE CORNER LOCATION: SHELBY BLINDERT ; BOBBY SEDGWICK

**SKETCH:**



\* SEE SECTION SUMMARY FOR \*  
RELATIONSHIP TO AREA CORNERS

**LEGEND**

- GRANT COUNTY ALUMINUM MONUMENT FOUND
- ▲ 1" X 12" IRON PIPE SET
- \*\*\* EXISTING FENCE LOCATION

MAR 24 2000

# GRANT COUNTY CERTIFIED LAND CORNER

**CERTIFICATE:**

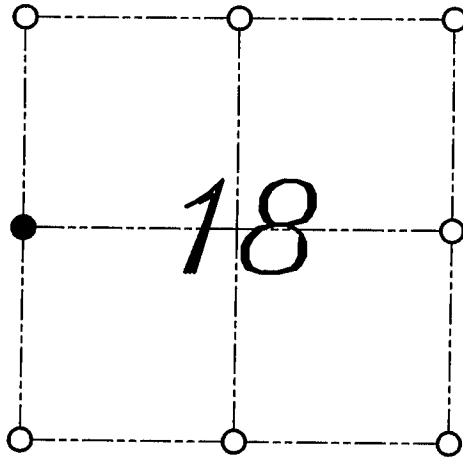
I, Larry L. Austin, do hereby certify that on the 9th day of September, 1999, I found evidence of the West 1/4 corner of Section 18, Town 5 North, Range 2 West, of the Fourth Principal Meridian, and I re-established said corner according to the Wisconsin Statutes as shown and described hereon.

DATED THIS 30th DAY OF JANUARY, 2000

*Larry L. Austin*  
Larry L. Austin S-1903



CORNER NUMBER 54



● = CORNER LOCATION  
WEST 1/4 CORNER OF  
SECTION 18, T 5 N R 2 W  
TOWN OF LIBERTY

**HISTORY OF ORIGINAL CORNER ESTABLISHMENT:**

Original corner not set by original surveys. Corner was established in 1844 by S. Wiltse. In 1875 Joel Barber tied to this corner and established bearing trees.

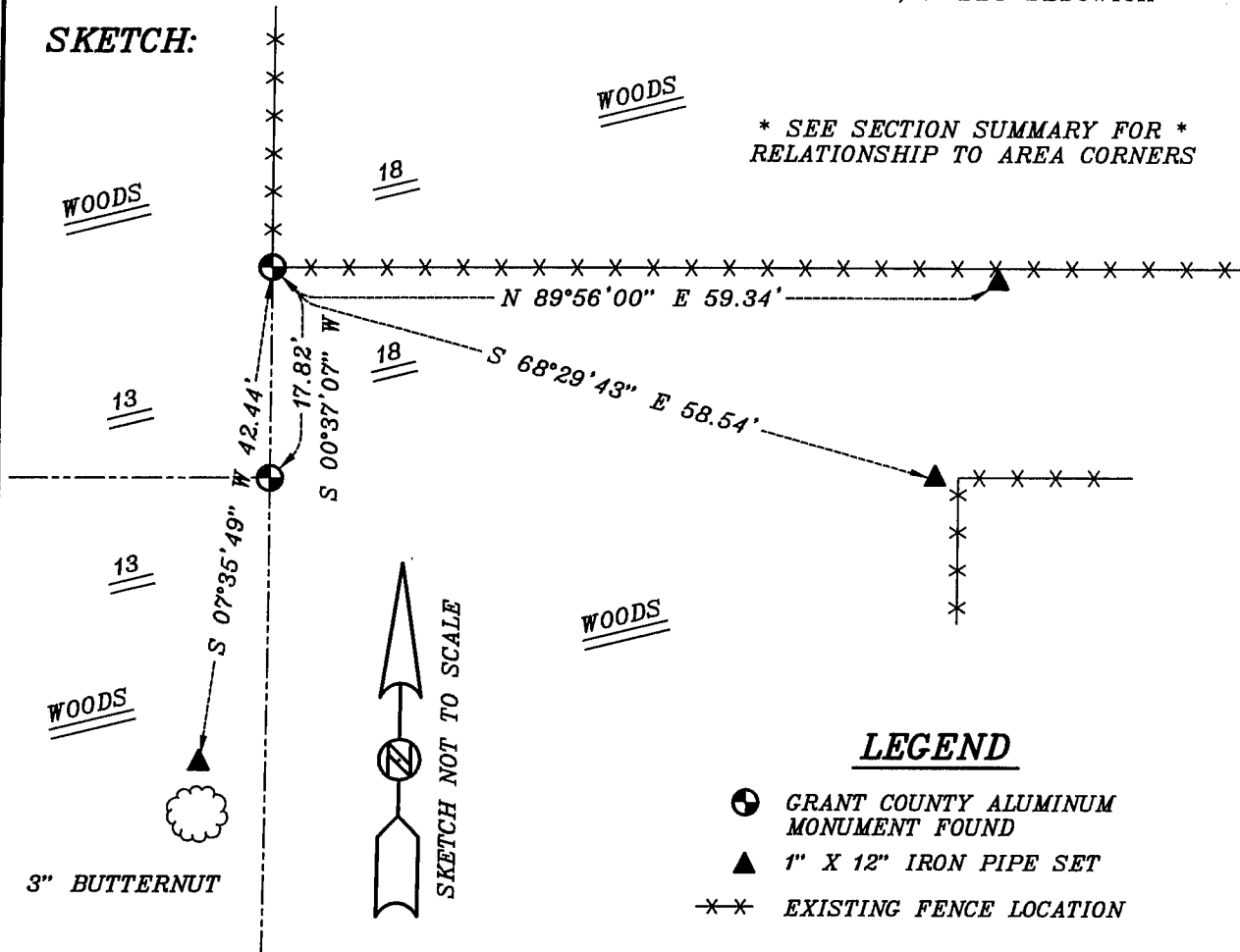
**DESCRIPTION OF CORNER EVIDENCE FOUND:**

No evidence of the bearing trees were found. I found an existing fence corner and accepted it's location after an E.D.M. and G.P.S. traverse of the area.

**DESCRIPTION OF CORNER AND WITNESS MONUMENTS, references and accessories used to perpetuate the original or re-established location of this corner**

WITNESS TO THE CORNER LOCATION: SHELBY BLINDERT ; BOBBY SEDGWICK

**SKETCH:**



\* SEE SECTION SUMMARY FOR \*  
RELATIONSHIP TO AREA CORNERS

**LEGEND**

- GRANT COUNTY ALUMINUM MONUMENT FOUND
- ▲ 1" X 12" IRON PIPE SET
- ×× EXISTING FENCE LOCATION