

U.S. Public Land Survey Monument Record

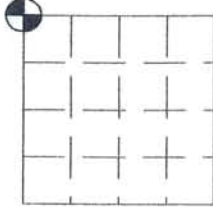
(a) Identify the corner by reference to the U.S. public land survey system.

This record shall show the location of the corner and shall include all of the following nine elements (a through i).

 = Corner monument restored.

Sec. 19, T 5 N, R 2 W

The Northwest corner of the Northwest quarter of Section 19, Town 5 North, Range 2 West, Liberty Township, Grant County, Wisconsin.



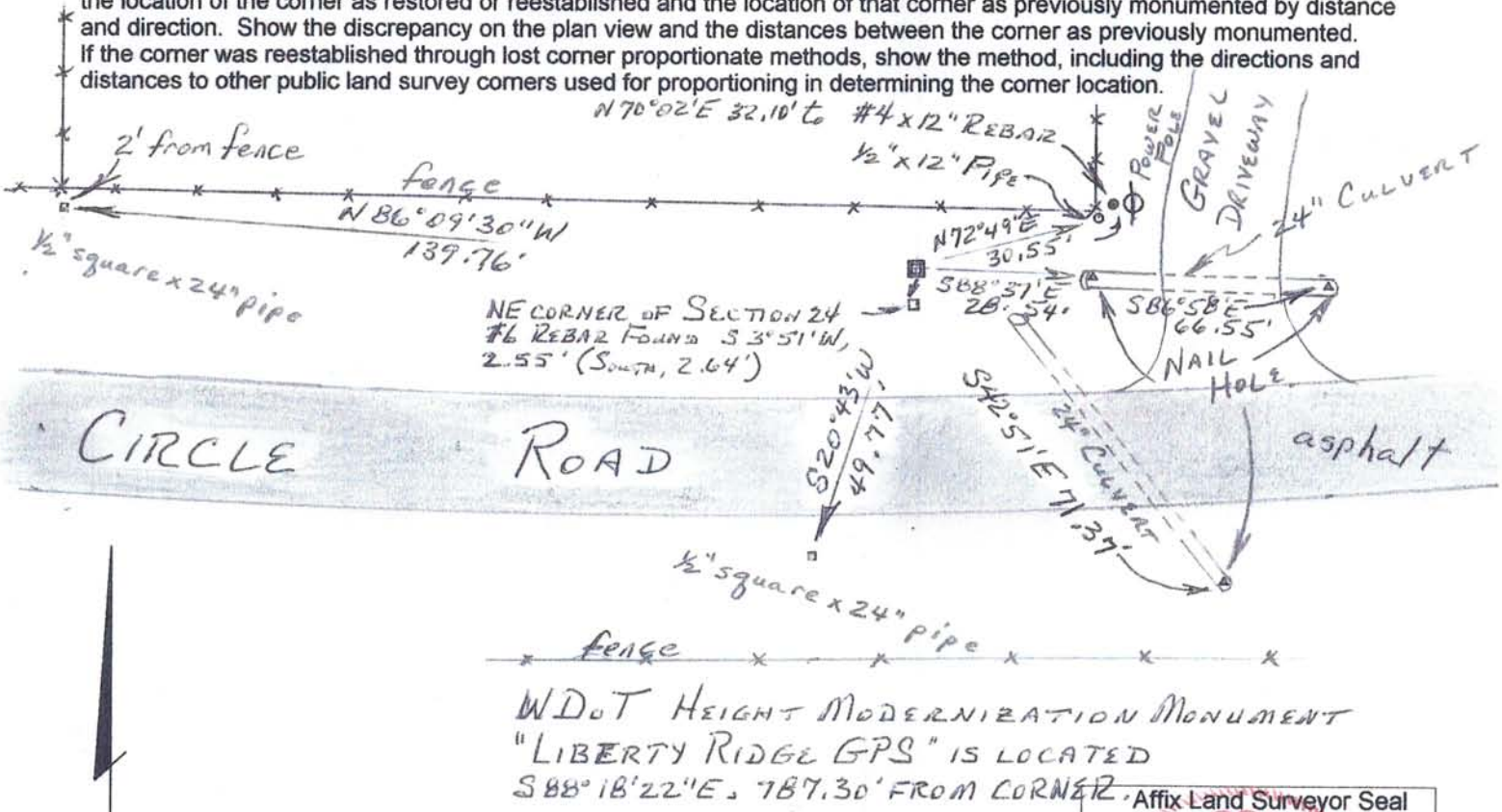
(f) The corner was restored through acceptance of
(1) an obliterated evidence location
(2) a found perpetuated location
(3) lost corner proportionate methods

(b) Describe any record evidence, monument evidence, occupational evidence, testimonial evidence or any other material evidence you considered, and whether the monument was placed or found.

Found and accepted a #6 rebar as set by Larry Austin and shown on CSM No. 706 of Grant County and other surveys.

GRANT COUNTY COORDINATES
NAD 1983 (2011) WISCONS
N 542932.78
E 831067.06
elev 1095.3 (geoid 2012)

(c, d, e, g, h, i) Plan view drawing below, provide reference ties to at least 4 witness monuments, or, if the location is within a municipality, to at least 2 witness monuments. Depict the relevant monuments and reference ties in sufficient detail to enable accurate relocation of the corner monument, if disturbed. Indicate North. Describe any material discrepancy between the location of the corner as restored or reestablished and the location of that corner as previously monumented by distance and direction. Show the discrepancy on the plan view and the distances between the corner as previously monumented. If the corner was reestablished through lost corner proportionate methods, show the method, including the directions and distances to other public land survey corners used for proportionating in determining the corner location.



Scale: 1" = 30'

(i) I, Bruce D. Bowden do certify that the corner location shown on this record was determined by me or under my direction and control and that this U.S. Public Land Survey Monument Record is correct and complete to the best of my knowledge and belief.

Bruce D. Bowden March 14, 2016
Signature Date



MAR 17 2016