

U.S. PUBLIC LAND SURVEY MONUMENT RECORD - GRANT COUNTY, WI

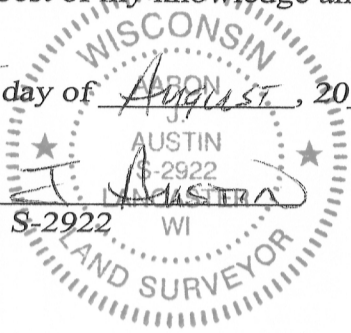
Section 12, Town 5 North Range 3 West, Town of North Lancaster

CERTIFICATE:

I, Aaron J. Austin, do hereby certify that the corner location on this record was determined by me and/or under my direct supervision and that this U.S. Public Land Survey Monument Record is correct and complete to the best of my knowledge and belief.

Dated this 15 day of August, 2013.

Aaron J. Austin
 Aaron J. Austin, S-2922 WI



● = CORNER LOCATION

GRANT COUNTY COORDINATES: N=550877.37 E=E:828389.29

HISTORY OF CORNER ESTABLISHMENT:

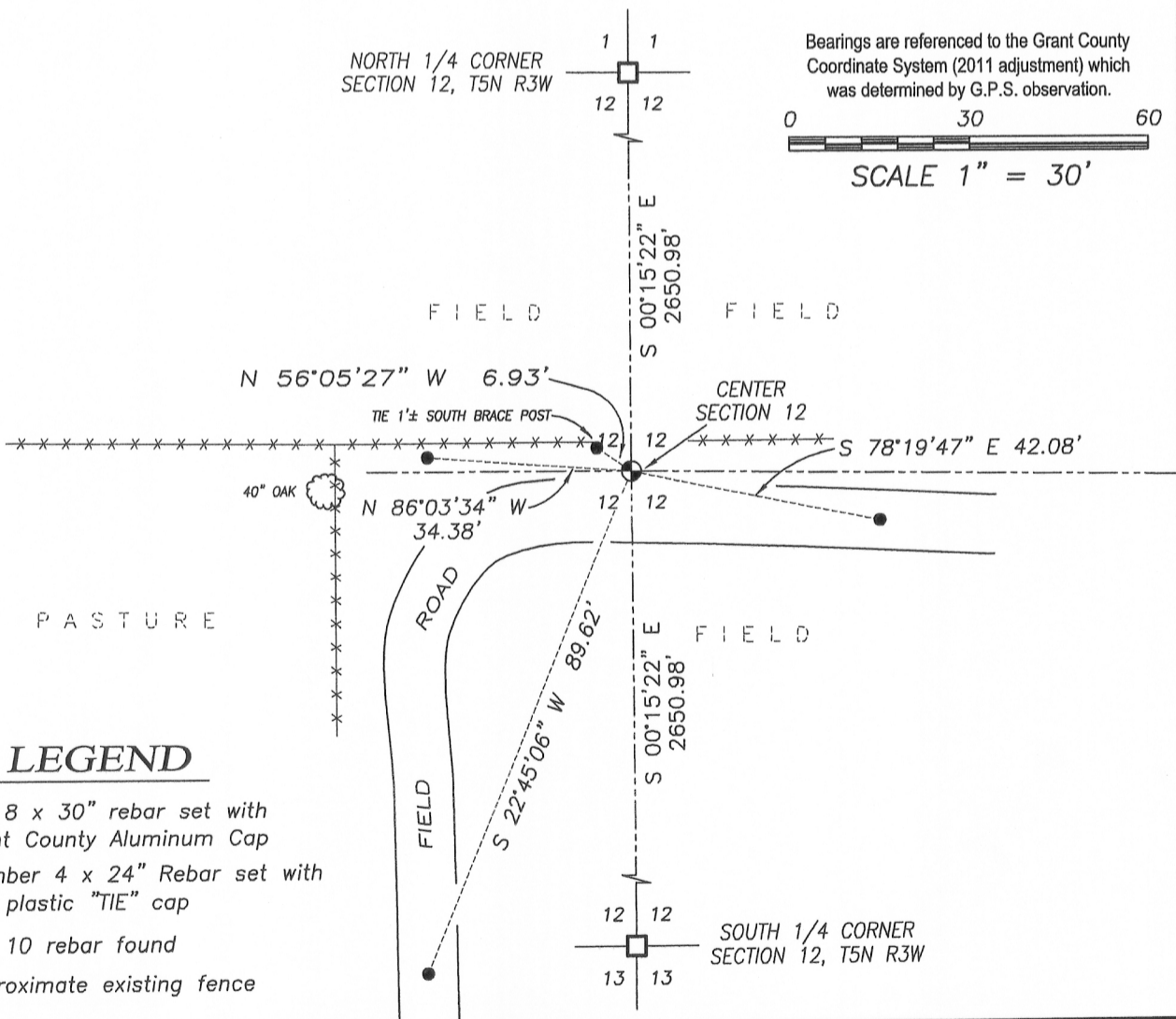
Corner was not set with original survey. Corner was established by a survey filed in Book "D", Page 252.

DESCRIPTION OF CORNER EVIDENCE FOUND:

No evidence of the corner was found. Corner was reset online and equidistant between the North 1/4 corner and the South 1/4 corner of Section 12 as shown on survey filed in Book "D", Page 252. Location was verified by G.P.S. and E.D.M. methods.

DESCRIPTION OF CORNER AND WITNESS MONUMENTS, references and accessories used to perpetuate the original or re-established location of this corner. Witnesses to corner location Shane Austin

SKETCH:



LEGEND

- No. 8 x 30" rebar set with Grant County Aluminum Cap
- Number 4 x 24" Rebar set with red plastic "TIE" cap
- No. 10 rebar found
- x-x- Approximate existing fence



4211 HWY 81 E, LANCASTER, WI 53813
 PHONE: 608-723-6363 FAX: 608-723-6702

JOB NO: 11s192-A
 G:\GRANTDOT\HWY61B
 H:\TIE\T5NR3W\39.5

FIELDBOOK: TDSR
 DRAWN BY: AJ AUSTIN
 CREW: SW AUSTIN

39.5

AUG 15 2013