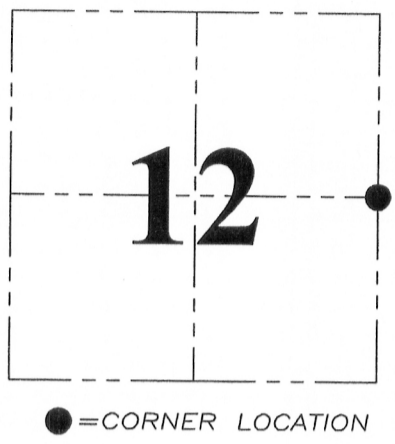


**U.S. PUBLIC LAND SURVEY MONUMENT RECORD - GRANT COUNTY, WI**  
 Section 12, Town 5 North Range 3 West, Town of North Lancaster

**CERTIFICATE:**  
 I, Aaron J. Austin, do hereby certify that the corner location on this record was determined by me and/or under my direct supervision and that this U.S. Public Land Survey Monument Record is correct and complete to the best of my knowledge and belief.

Dated this 15 day of August, 2013.

*Aaron J. Austin*  
 Aaron J. Austin, S-2922



GRANT COUNTY COORDINATES: N=550881.56 E=831046.76

HISTORY OF CORNER ESTABLISHMENT:

Corner originally set by Lucius Lyon in 1832. Corner was dimensioned in on Plat of Right of Way Division Job No. 9577. No other record of corner found.

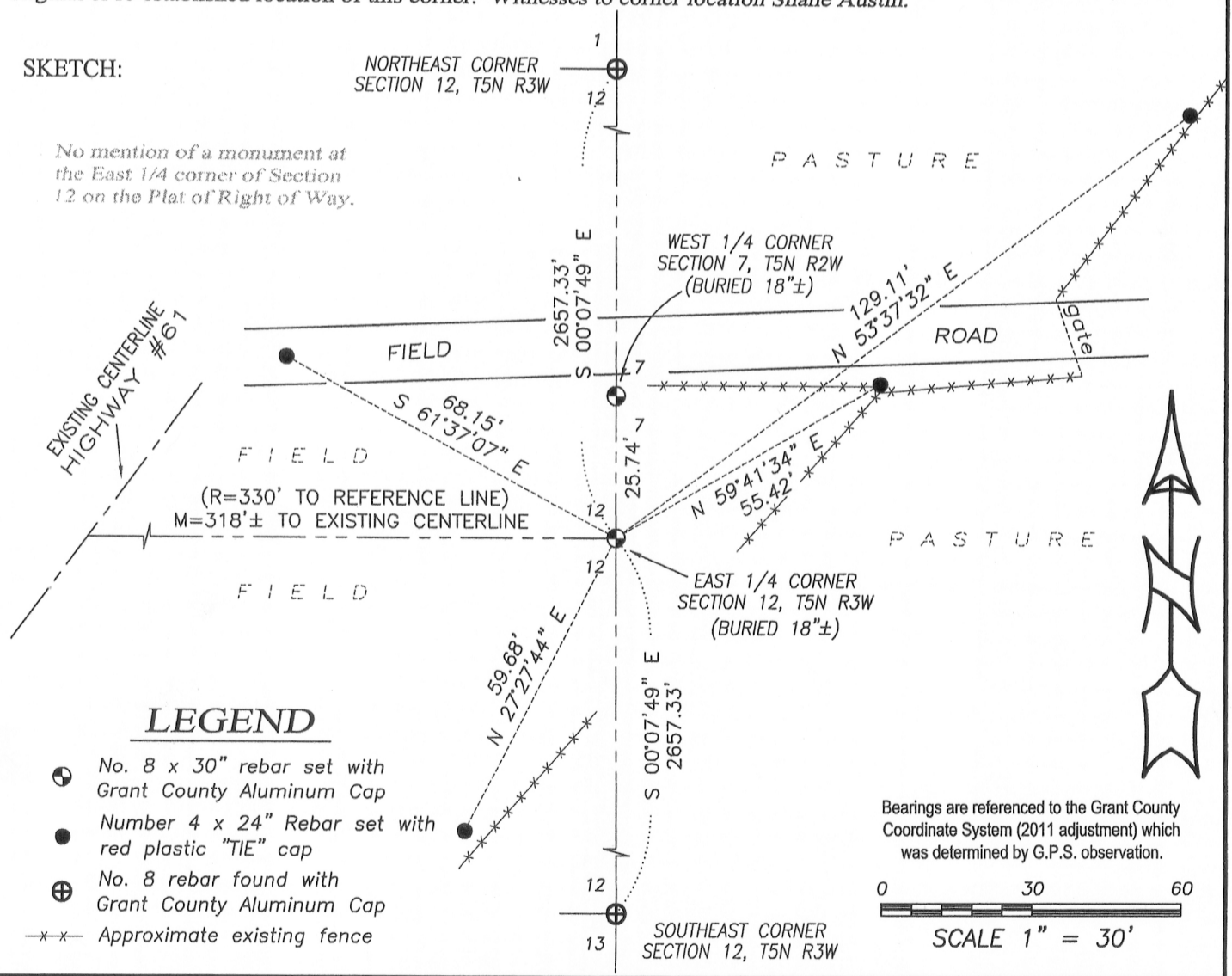
DESCRIPTION OF CORNER EVIDENCE FOUND:

No evidence of the corner was found. Corner was reset online and equidistant between the Northeast corner and the Southeast corner of Section 12. Corner location was verified by E.D.M. and G.P.S methods.

DESCRIPTION OF CORNER AND WITNESS MONUMENTS, references and accessories used to perpetuate the original or re-established location of this corner. Witnesses to corner location Shane Austin.

**SKETCH:**

No mention of a monument at the East 1/4 corner of Section 12 on the Plat of Right of Way.

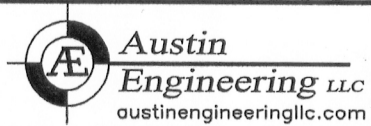


**LEGEND**

- No. 8 x 30" rebar set with Grant County Aluminum Cap
- Number 4 x 24" Rebar set with red plastic "TIE" cap
- ⊕ No. 8 rebar found with Grant County Aluminum Cap
- x-x- Approximate existing fence

Bearings are referenced to the Grant County Coordinate System (2011 adjustment) which was determined by G.P.S. observation.

0 30 60  
 SCALE 1" = 30'



4211 HWY 81 E, LANCASTER, WI 53813  
 PHONE: 608-723-6363 FAX: 608-723-6702

JOB NO: 11S192-A  
 G:\GRANTDOT\HWY61B  
 H:\TIE\T5NR3W\40

FIELDBOOK: TDSR  
 DRAWN BY: AJ AUSTIN  
 CREW: SW AUSTIN

# U.S. PUBLIC LAND SURVEY MONUMENT RECORD - GRANT COUNTY, WI

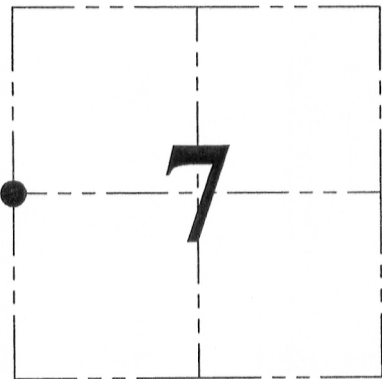
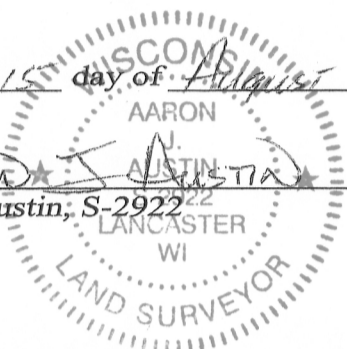
Section 7, Town 5 North Range 2 West, Town of Liberty

**CERTIFICATE:**

I, Aaron J. Austin, do hereby certify that the corner location on this record was determined by me and/or under my direct supervision and that this U.S. Public Land Survey Monument Record is correct and complete to the best of my knowledge and belief.

Dated this 15 day of August, 2013.

*Aaron J. Austin*  
 Aaron J. Austin, S-2922  
 LANCASTER, WI



● = CORNER LOCATION

GRANT COUNTY COORDINATES: N=550907.30 E=831046.70

HISTORY OF CORNER ESTABLISHMENT:

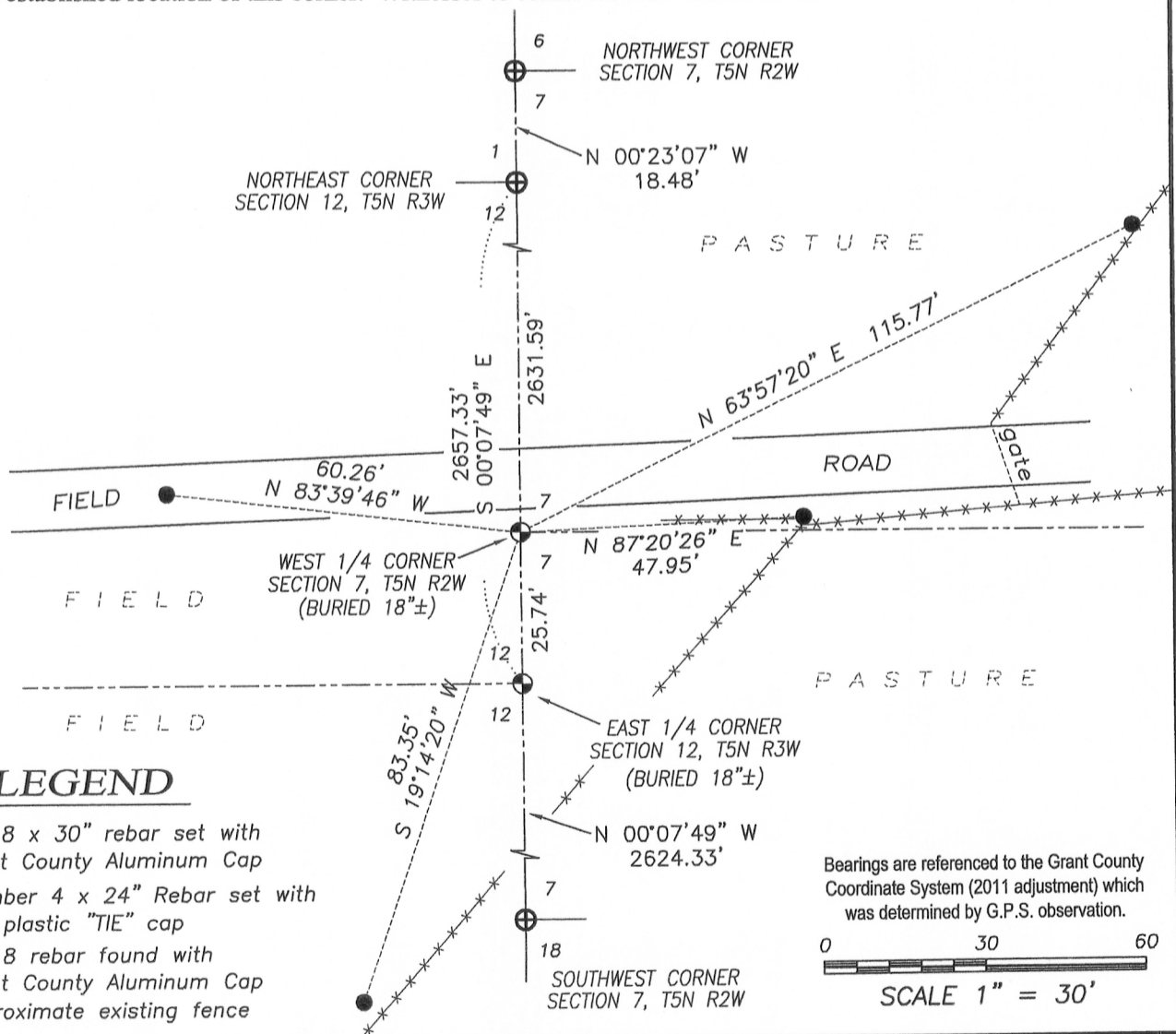
Corner was not set with original survey.  
 No record of this corner was found.

DESCRIPTION OF CORNER EVIDENCE FOUND:

Corner was set on the East line of Section 12 equidistant between the Southwest corner and Northwest corner of Section 7. Corner location was verified by E.D.M. and G.P.S methods.

DESCRIPTION OF CORNER AND WITNESS MONUMENTS, references and accessories used to perpetuate the original or re-established location of this corner. Witnesses to corner location Shane Austin.

SKETCH:



**LEGEND**

- No. 8 x 30" rebar set with Grant County Aluminum Cap
- Number 4 x 24" Rebar set with red plastic "TIE" cap
- ⊕ No. 8 rebar found with Grant County Aluminum Cap
- x-x- Approximate existing fence

Bearings are referenced to the Grant County Coordinate System (2011 adjustment) which was determined by G.P.S. observation.

0 30 60  
 SCALE 1" = 30'



**Austin Engineering LLC**  
 austinengineeringllc.com

4211 HWY 81 E, LANCASTER, WI 53813  
 PHONE: 608-723-6363 FAX: 608-723-6702

JOB NO: 11S192-A  
 G:\GRANTDOT\HWY61B  
 H:\TIE\T5NR2W\34

FIELDBOOK: TDSR  
 DRAWN BY: AJ AUSTIN  
 CREW: SW AUSTIN