

U.S. PUBLIC LAND SURVEY MONUMENT RECORD - GRANT COUNTY, WI

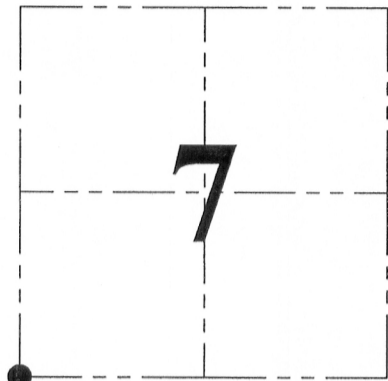
Section 7, Town 5 North Range 2 West, Town of Liberty

CERTIFICATE:

I, Aaron J. Austin, do hereby certify that the corner location on this record was determined by me and/or under my direct supervision and that this U.S. Public Land Survey Monument Record is correct and complete to the best of my knowledge and belief.

Dated this 15 day of August, 2013.

Aaron J. Austin
 Aaron J. Austin, S-2922



● = CORNER LOCATION

GRANT COUNTY COORDINATES: N=548257.24 E=831052.72

HISTORY OF CORNER ESTABLISHMENT:

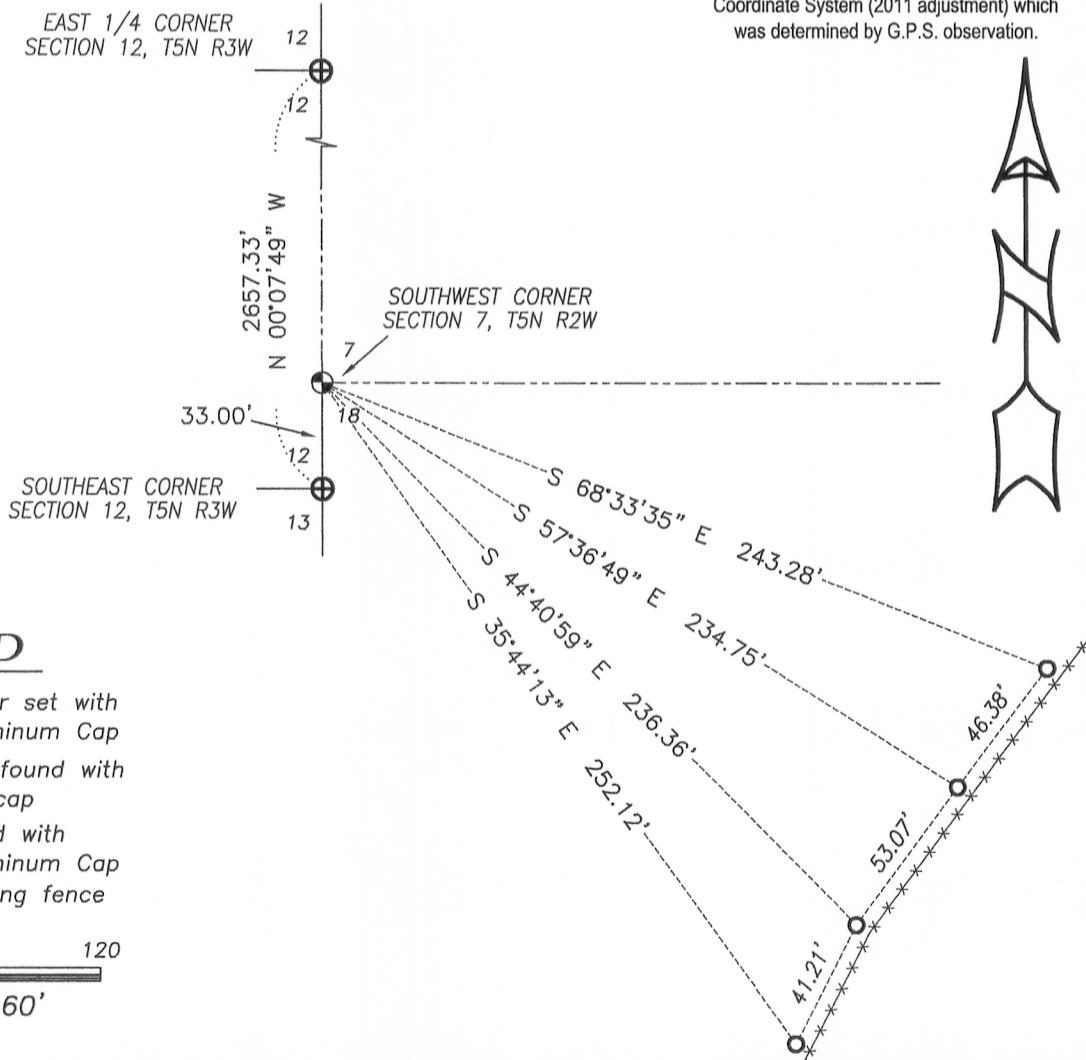
Corner was originally set by Henry Parke in 1832.
 No other record of this corner was found.

DESCRIPTION OF CORNER EVIDENCE FOUND:

Corner was set on the East line of Section 12 at the recorded offset.
 Corner location was verified by E.D.M. and G.P.S methods.

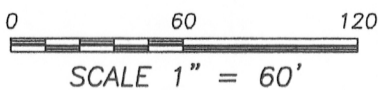
DESCRIPTION OF CORNER AND WITNESS MONUMENTS, references and accessories used to perpetuate the original or re-established location of this corner. Witnesses to corner location Shane Austin.

SKETCH:



LEGEND

- No. 8 x 30" rebar set with Grant County Aluminum Cap
- Number 4 Rebar found with red plastic "TIE" cap
- ⊕ No. 8 rebar found with Grant County Aluminum Cap
- x-x- Approximate existing fence



4211 HWY 81 E, LANCASTER, WI 53813
 PHONE: 608-723-6363 FAX: 608-723-6702

JOB NO: 11S192-A
 G:\GRANTDOT\HWY61B
 H:\TIE\T5NR2W\53

FIELDBOOK: TDSR
 DRAWN BY: AJ AUSTIN
 CREW: SW AUSTIN

MAR 24 2000

GRANT COUNTY CERTIFIED LAND CORNER

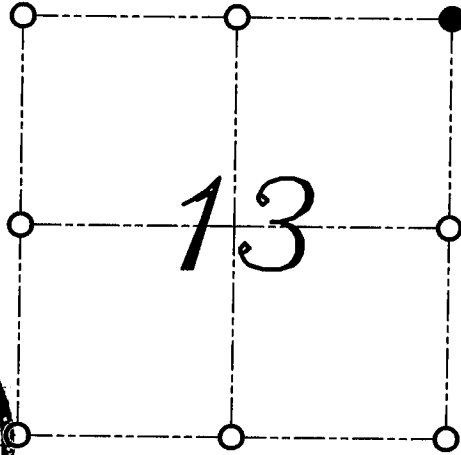
CERTIFICATE:

I, Larry L. Austin, do hereby certify that on the 25th day of September, 1999, I found no evidence of the Northeast corner of Section 13, Town 5 North, Range 3 West, of the Fourth Principal Meridian, and I re-established said corner according to the Wisconsin Statutes as shown and described hereon.

DATED THIS 30th DAY OF JANUARY, 2000

Larry L. Austin
Larry L. Austin S-1903

CORNER NUMBER 41



● = CORNER LOCATION

**NORTHEAST CORNER OF
SECTION 13, T 5 N R 3 W
TOWN OF NORTH LANCASTER**



SEAL

HISTORY OF ORIGINAL CORNER ESTABLISHMENT:

Corner was originally set in 1832 by Sibley.
Joel Barber tied to the corner in 1875.

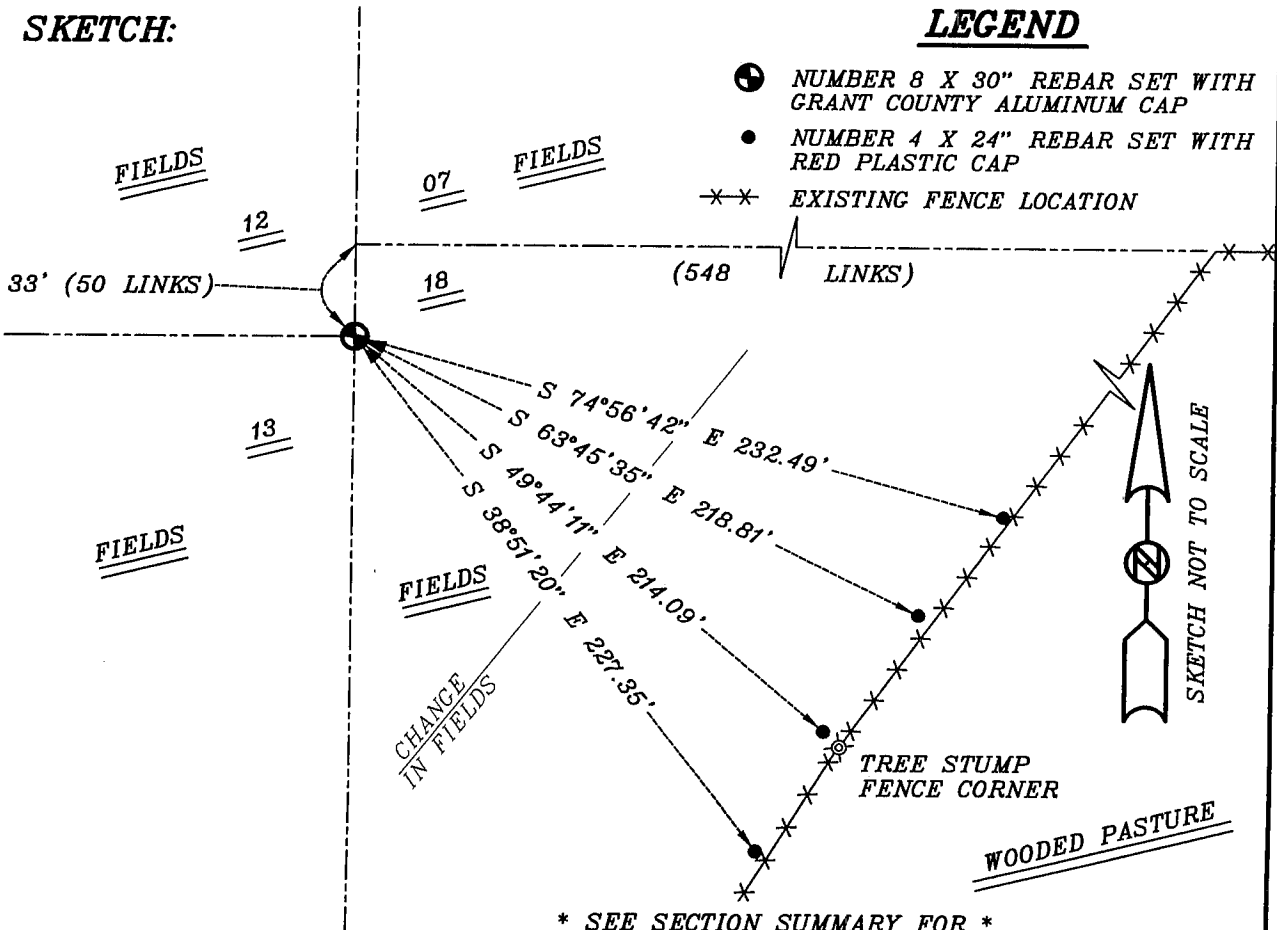
DESCRIPTION OF CORNER EVIDENCE FOUND:

I found an existing fence corner East of the corner on the North line of the Northwest 1/4 of Section 18. I held the 548 Links in Volume 765 Page 958 for Easting. Nothing was established by the recorded offset. Verified this location using E.D.M. and G.P.S. methods.

DESCRIPTION OF CORNER AND WITNESS MONUMENTS, references and accessories used to perpetuate the original or re-established location of this corner
WITNESS TO THE CORNER LOCATION: BOBBY SEDGWICK ; SHELBY BLINDERT

SKETCH:

LEGEND



* SEE SECTION SUMMARY FOR *
RELATIONSHIP TO AREA CORNERS