

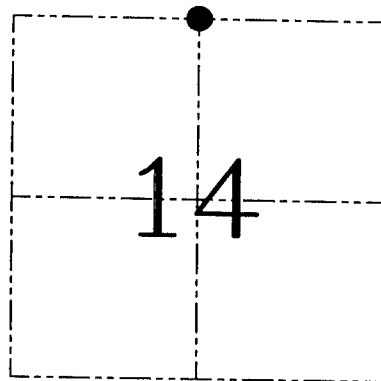
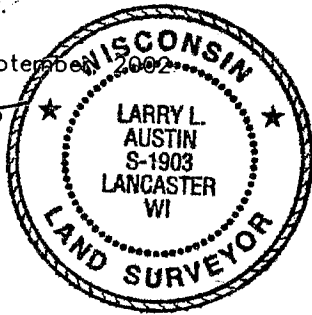
**U.S. PUBLIC LAND SURVEY MONUMENT RECORD – GRANT COUNTY, WI**  
**Section 14, Town 5 North Range 3 West, Town of North Lancaster**

**CERTIFICATE**

I, Larry L. Austin, do hereby certify that the corner location on this record was determined by me and/or under my direct supervision and that this U.S. public land survey monument record is correct and complete to the best of my knowledge and belief.

Dated this 22nd day of September 2002

*Larry L. Austin*  
 Larry L. Austin S-1903



● = CORNER LOCATION

**HISTORY OF CORNER ESTABLISHMENT**

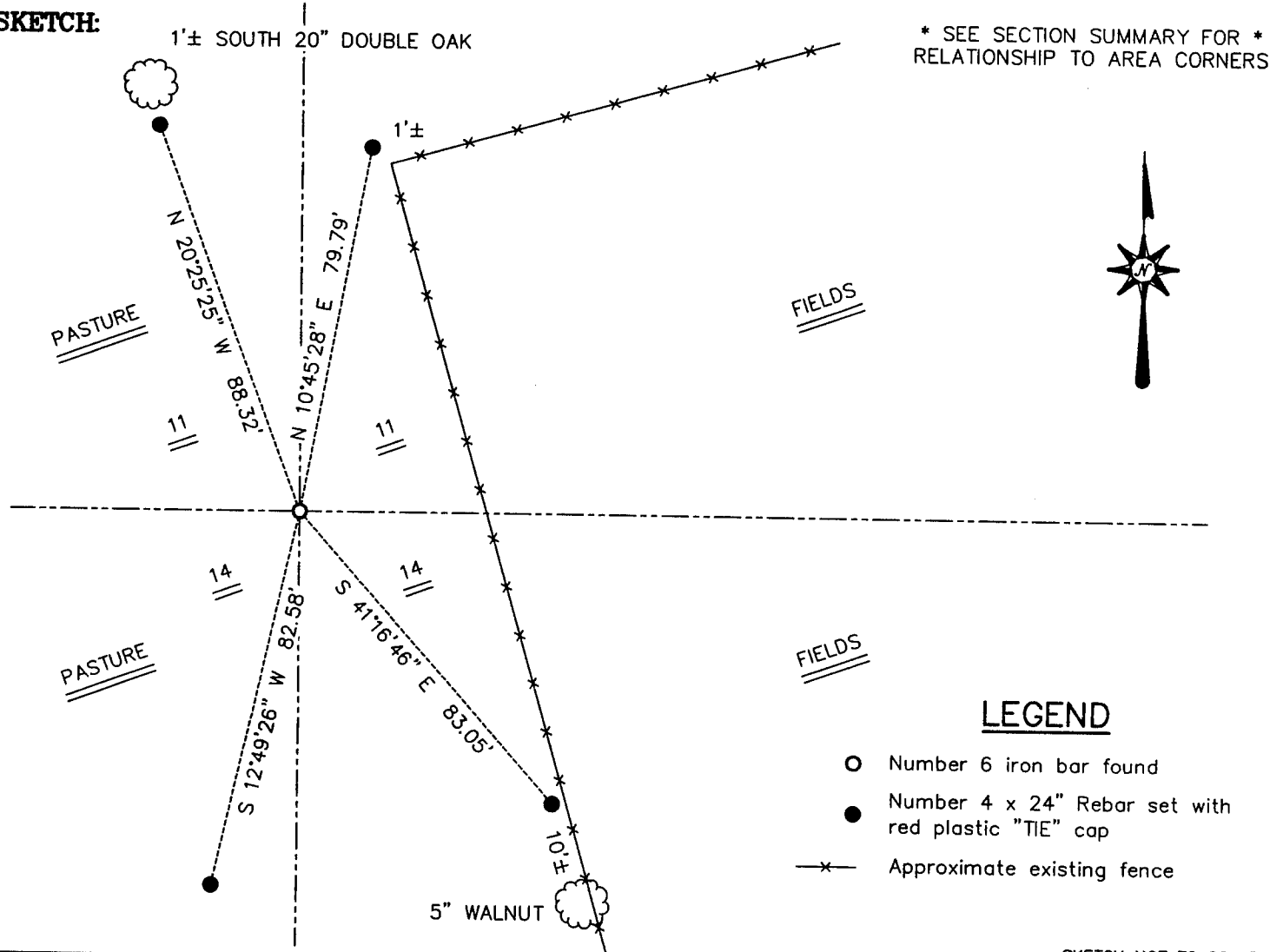
Corner was originally set in 1832 by Harvey Parke. In the 1890's Sampson tied to this corner various times presumably (not signed or dated). In June 2000 Rossman set a #6 iron bar at this location.

**DESCRIPTION OF CORNER EVIDENCE FOUND**

I found and accepted the #6 iron bar after an EDM & GPS traverse of the area.

**DESCRIPTION OF CORNER AND WITNESS MONUMENTS**, references and accessories used to perpetuate the original or re-established location of this corner. Witnesses to corner location Bobby Sedgwick & Shane Austin & Brad Digman

**SKETCH:**



\* SEE SECTION SUMMARY FOR \*  
 RELATIONSHIP TO AREA CORNERS

**LEGEND**

- Number 6 iron bar found
- Number 4 x 24" Rebar set with red plastic "TIE" cap
- x— Approximate existing fence

SKETCH NOT TO SCALE

**AUSTIN ENGINEERING, LLC**  
 4211 HWY 81 EAST, LANCASTER, WI 53813  
 PHONE 608-723-6363 FAX 608-723-6702

FIELDBOOK: SDR33, 2223  
 G: \T5NR3W\27  
 C: \SWA\TIE\T5NR3W\44  
 CREW: BS-SB-SA-BD

DRAWN BY: SW AUSTIN  
 APPROVED: LL AUSTIN

**CORNER NUMBER 44**