

U.S. PUBLIC LAND SURVEY MONUMENT RECORD – GRANT COUNTY, WI

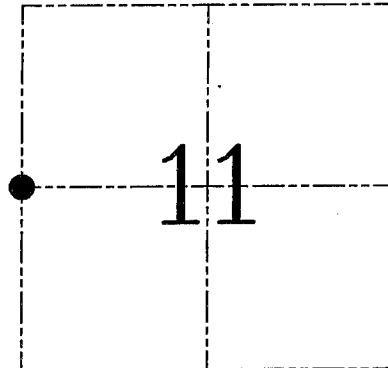
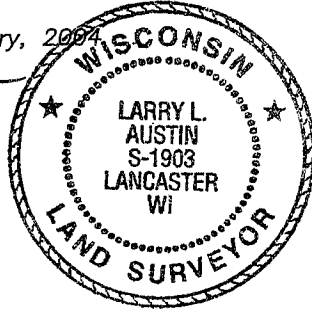
Section 11, Town 5 North Range 3 West, Town of North Lancaster

CERTIFICATE

I, Larry L. Austin, do hereby certify that the corner location on this record was determined by me and/or under my direct supervision and that this U.S. public land survey monument record is correct and complete to the best of my knowledge and belief.

Dated this 29th day of January, 2007

Larry L. Austin
Larry L. Austin S-1903



● = CORNER LOCATION

HISTORY OF CORNER ESTABLISHMENT

Corner was originally set in 1832–1833 by Parke.
In 2000 Rossman found an iron rod at this location.

DESCRIPTION OF CORNER EVIDENCE FOUND

I found an existing 3/4" iron bar at this location. I accepted it's location after an EDM & GPS traverse of the area.

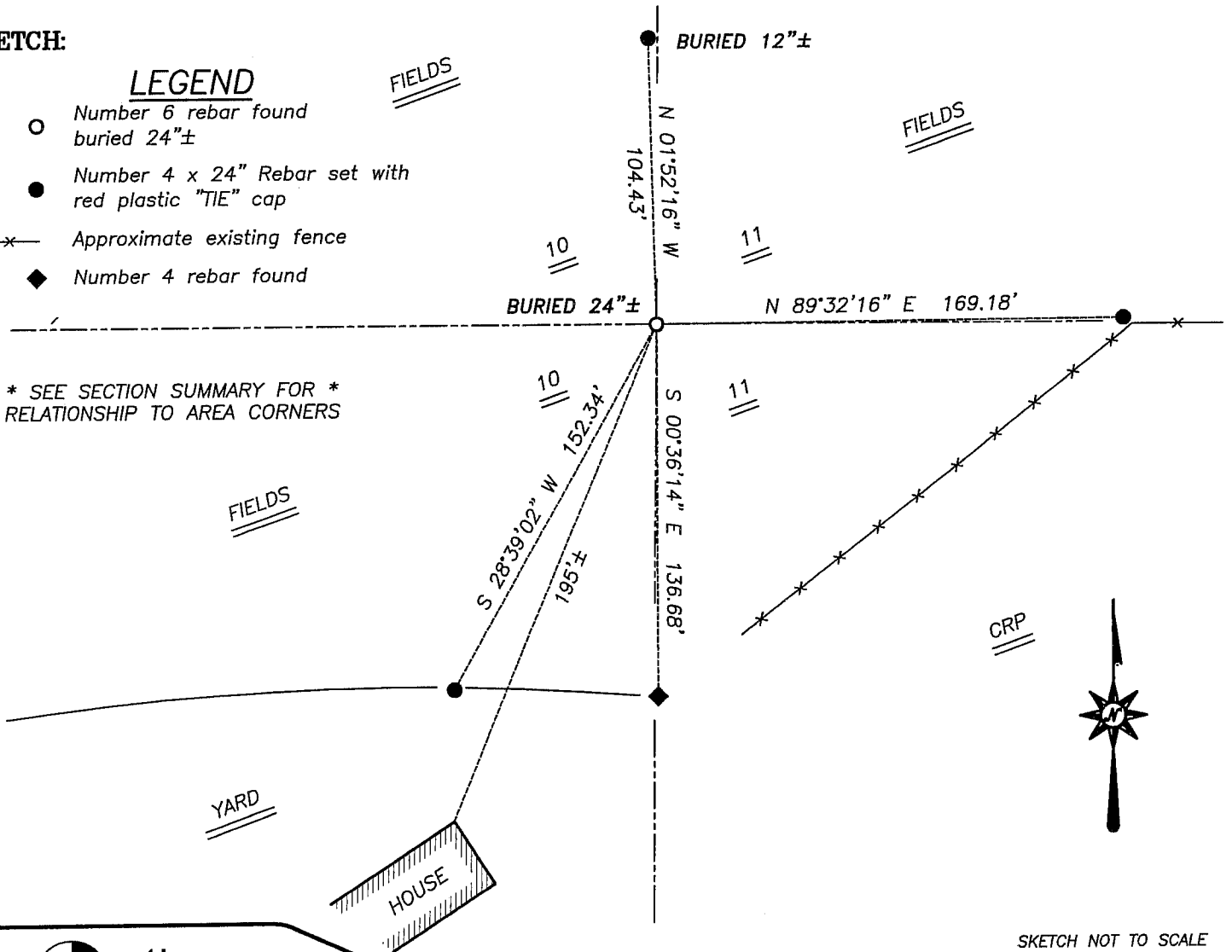
DESCRIPTION OF CORNER AND WITNESS MONUMENTS, references and accessories used to perpetuate the original or re-established location of this corner. Witnesses to corner location Bobby Sedgwick & Shane Austin & Brad Digman

SKETCH:

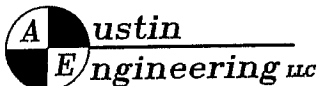
LEGEND

- Number 6 rebar found buried 24"±
- Number 4 x 24" Rebar set with red plastic "TIE" cap
- x— Approximate existing fence
- ◆ Number 4 rebar found

* SEE SECTION SUMMARY FOR *
RELATIONSHIP TO AREA CORNERS



SKETCH NOT TO SCALE



4211 HWY 81 E, LANCASTER, WI 53813
PHONE 608-723-6363 FAX 608-723-6702

JOB NUMBER 03S310
FIELDBOOK: TSDR, 2319
G:\T5NR3W\27
H:\TIE\T5NR3W\38

DRAWN BY: SW AUSTIN
APPROVED: LL AUSTIN