

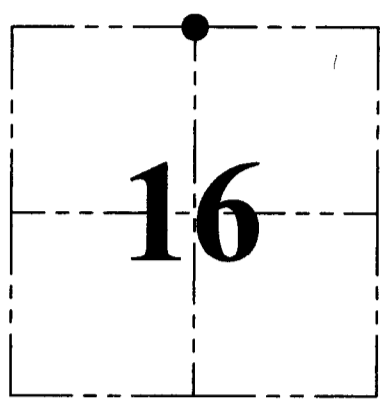
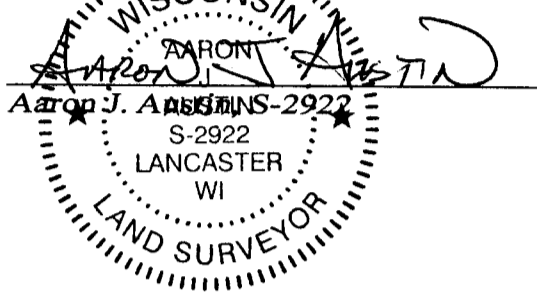
U.S. PUBLIC LAND SURVEY MONUMENT RECORD - GRANT COUNTY, WI

Section 16, Town 5 North Range 3 West, Town of North Lancaster

CERTIFICATE:

I, Aaron J. Austin, Wisconsin Professional Land Surveyor, do hereby certify that the corner location on this record was determined by me and/or under my direct supervision and that this U.S. Public Land Survey Monument Record is correct and complete to the best of my knowledge and belief.

Dated this 9th day of April, 2015.



● = CORNER LOCATION

HISTORY OF CORNER ESTABLISHMENT:

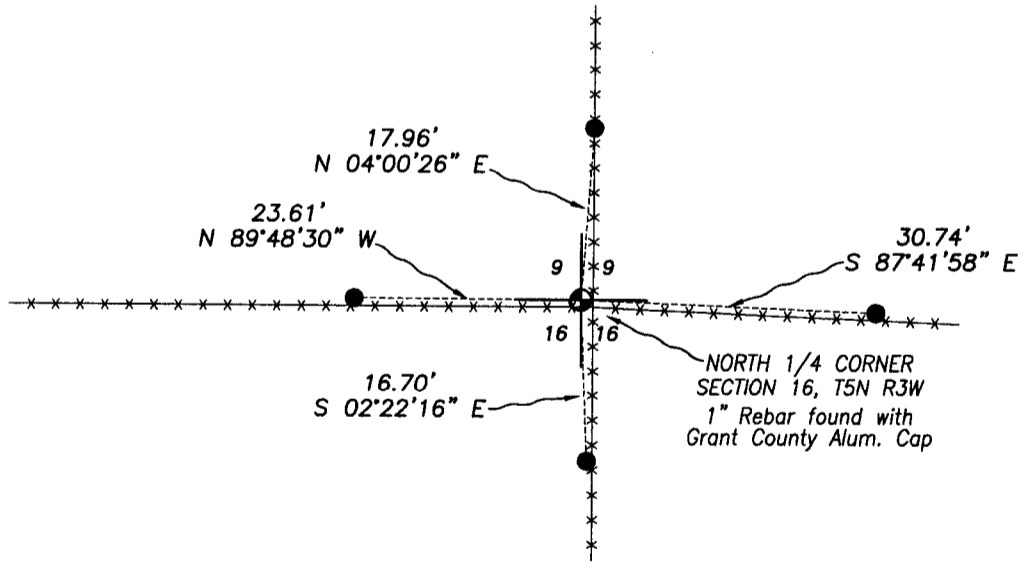
1833 Harvey Parke set original corner.
 2009-Larry Austin set a 1" Rebar with a Grant County Aluminum Cap at the corner on a Survey filed in Book 24, Page 72.
 No other record found for this corner.

DESCRIPTION OF CORNER EVIDENCE FOUND:

I found the 1" Rebar with the Grant County Aluminum Cap set by Larry Austin at an occupied fence intersection. I set 4 witness corners as shown hereon and verified this location with G.P.S. methods.

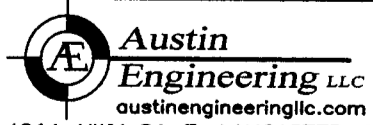
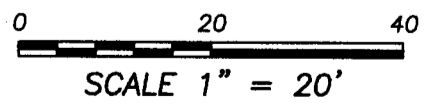
DESCRIPTION OF CORNER AND WITNESS MONUMENTS, references and accessories used to perpetuate the original or re-established location of this corner. Witnesses to corner location Shane Austin.

SKETCH:



LEGEND

- ⊕ Section Corner—as designated
- Number 4 x 24" Rebar set with red plastic "TIE" cap
- x-x-x- Approximate existing fence



4211 HWY 81 E, LANCASTER, WI 53813
 PHONE: 608-723-6363 FAX: 608-723-6702

JOB NO: 15s021
 H:CRD\15s021
 H:\TIE\T5NR3W\48

FIELDBOOK: TDSR
 DRAWN BY: AJ AUSTIN
 CREW: SW AUSTIN