

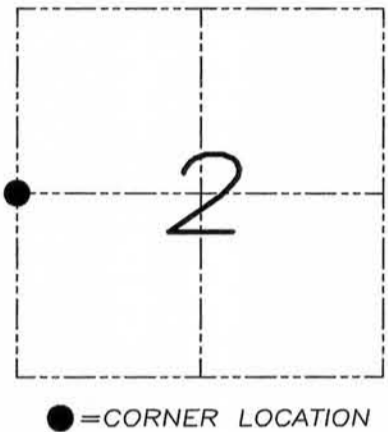
U.S. PUBLIC LAND SURVEY MONUMENT RECORD

Section 2, Town 5 North Range 3 West, Town of North Lancaster, Grant County, Wisconsin

CERTIFICATE

I, Larry L. Austin, do hereby certify that the corner location on this record was determined by me and/or under my direct supervision and that this U.S. public land survey monument record is correct and complete to the best of my knowledge and belief.

Larry L. Austin
 Larry L. Austin, S-1903
 4.10.08
 date



HISTORY OF CORNER

Corner was originally set in 1833 by Harvey Parke. No other record of the corner was found.

CORNER EVIDENCE FOUND

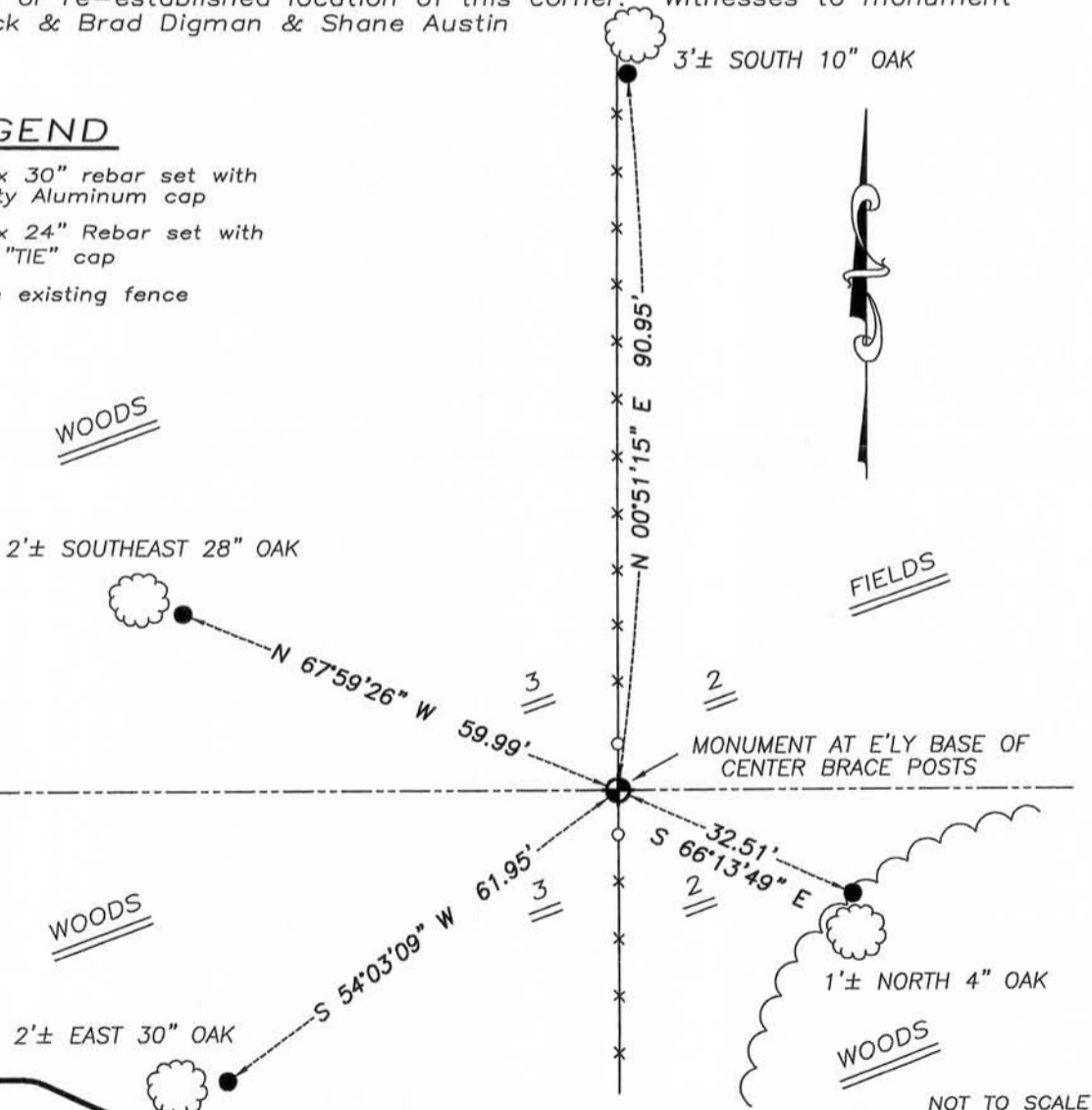
I reset the corner at an occupied location of a split in fence North-South and verified this location by using EDM and GPS methods.

DESCRIPTION OF CORNER AND WITNESS MONUMENTS, references and accessories used to perpetuate the original or re-established location of this corner. Witnesses to monument location Bobby Sedgwick & Brad Digman & Shane Austin

SKETCH:

LEGEND

- ⊕ Number 8 x 30" rebar set with Grant County Aluminum cap
- Number 4 x 24" Rebar set with red plastic "TIE" cap
- x— Approximate existing fence



Austin Engineering LLC

4211 HWY 81 E, LANCASTER, WI 53813
 PHONE 608-723-6363 FAX 608-723-6702

JOB NUMBER 09S022-OSTER
 FIELDBOOK: TDSR, 2802
 G:\T5NR3W\02
 H:\TIE\T5NR3W\18

DRAWN BY: SW AUSTIN
 APPROVED: LL AUSTIN